



Agenda
Linn-Benton Loop Joint Board and Technical Advisory Committee
Meeting
Remote Only

Date: Tuesday, August 25, 2020
Time: 3:00 – 5:00 pm
Location: Via Zoom: <https://us02web.zoom.us/j/89646057991>
Phone: 1-669-900-6833
Meeting ID: 896 4605 7991
Passcode: 2020
Contact: Nick Meltzer, Transportation Manager, 541-758-1911

1. **3:00 Call to Order, Agenda Review, Introductions** **Chair,
Commissioner
Pat Malone**
Introduction of new staff
2. **3:15 Public Comment** **Chair**
3. **3:25 Minutes of May 26, 2020 Meeting (Attachment A)** **Chair**

Action Requested: Approval Minutes
4. **3:30 Loop 40th Anniversary Announcement** **Staff**
5. **3:40 COVID19 Impacts on Service** **Hoffman**
Transit staff will discuss potential service changes for the fall due to the COVID-19 pandemic.

Action Requested: Discussion
6. **4:20 Ridership and Budget Reports (Attachments B1-B2)** **Hoffman**

Action Requested: Information Only
7. **4:00 STIF Projects Update** **Staff**
A check in on existing STIF projects. In addition, with an upcoming opportunity for STIF discretionary grants, staff is requesting input on whether there are long term opportunities for the Loop and Albany-Corvallis region.

Action Requested: Discussion
8. **4:40 Updates and Other Business** **Chair**
9. **5:00 Adjournment** **Chair**

The meeting location is accessible to persons with disabilities. Sign language, interpreter services or other accommodations can also be provided by contacting Emma Chavez at least 48 hours prior to the meeting. Emma can be reached at 541-967-8551 (TTY/TTD 711) or echavez@ocwcog.org.

**LINN-BENTON LOOP Board
Teleconference
Tuesday, May 26, 2020
3:00 – 5:00**

DRAFT MEETING MINUTES

Board Members: Commissioner Pat Malone and Hal Brauner

Alternates Present: Mark Volmert

Staff: Barry Hoffman, Chris Bailey, Nick Meltzer, Dana Nichols, Stephen Dobrinich, C. Clark

TOPIC	DISCUSSION	DECISION / CONCLUSION
1. Call to Order	Staff, Nick Meltzer initiated roll call at 3:01 pm.	The Commissioner continued with the meeting at 3:02 pm.
2. Agenda Review		There were no changes to the agenda.
3. Public Comments		There were no public comments.
4. Minutes of March 31, 2020	Commissioner Pat Malone entertained the motion to remove the second iteration of Stephen Dobrinich name from the minutes, Hal Brauner approved the motion and Mark Volmert seconded.. Minutes approved by consensus.	Consensus to approve the March 31, 2020 meeting minutes with correction.
5. Loop Board Bylaws (Attachment B)	The board discussed the following four changes: Change 1 - The Loop board requested the bylaws be reflective of the IGA, which allows an at-large board member. In addition, as Albany Transit operates the Loop and they function on a bi-annual budget, the bylaws more accurately reflect approval procedures. <i>Section 5 a.</i>	Consensus by the Board to approve the updated bylaws as presented.

	<p>Change 2 - The Loop TAC requested a change to the way Loop Operator budgets are reviewed and approved. This change clarifies existing practice. <i>Section 5 a.</i></p> <p>Change 3 - The Loop TAC requested a change to the language regarding how TAC members are appointed. This change reflects actual practices. The existing text reflects an error incorporated into the original approved bylaws. <i>Section 7 a.</i></p> <p>Change 4 - Staff updated Section numbers on Section 7/8 to reflect the previous error. Staff also added the new revision date above signatures.</p> <p>Commissioner Pat Malone agreed that the bylaws are in agreement with IGA.</p> <p>Commissioner Pat Malone moved a motion of approval, Hal Brauner voted approval, and Mark Volmert seconded it with the note that the TAC had a healthy discussion about these changes and agreed to them. The language change is to reflect the current bylaws and practice of the TAC. The Board met consensus to approve the updated bylaws as presented.</p>	
<p>6. Loop Board Membership</p>	<p>Nick Meltzer noted that OSU is a large funder of the Loop, and staff wanted to confirm membership representation is in line for the needs of the Board. Commissioner Malone agreed that OSU is a major contributor. Hal Brauner mentioned that OSU chose not to participate on the governing Board because they are on the TAC. Brauner considers it appropriate to ask them again if they would like to have a seat on the Board.</p> <p>Nick Meltzer asked on behalf of Linn and Benton County if the Board thought it was appropriate to have individual county representatives on the Loop Board. Hal Brauner mentioned that the AAMPO and CAMPO representatives are currently county</p>	<p>Staff will follow up with the OSU TAC member to reach out and offer a board position</p> <p>No action to make any Board membership changes at this point.</p>

	<p>commissioners, but if AAMPO & CAMPO representatives weren't county representatives, then it is acceptable to address this issue again. It was agreed to not make any action at this point, until there is some change in the representation of the counties, it will be brought up again.</p>	
<p>7. Budget and Ridership Reports</p>	<p>Barry Hoffman discussed the financial report. He anticipates the next report will show the decrease in service, and some savings in costs. Otherwise, the budget is healthy.</p> <p>Commissioner Malone discussed the CARES Act money in Corvallis, and noted that they did well. CARES funding for the city of Albany received 2.8 million dollars of funding. Commissioner Malone is going to council tomorrow night to accept that funding; it can be used for eligible 5307 reimbursement expenses.</p> <p>Mark Volmert gave a broad overview over the amount allotted to which transit groups. The amount given to the cities reflect 3x the current annual costs. One year's worth of 5311 programs, no limit for how long to hold onto those funds. ODOT says their funds must be use by June 2021 for the 5311 funds. No local match for 5307 or 5311 funding.</p> <p>Barry Hoffman, Mark Volmert, and the Board members did some speculation on what the future would look like in regards to ridership, density, and the need for transportation come September in regards to COVID-19.</p> <p>Members discussed whether the August 25th meeting should be moved to accommodate fall operation adjustments. It was decided not to be moved at this time, with the understanding that an emergency meeting could be called or a joint meeting held with the TAC at their normally scheduled meeting.</p>	<p>There were no need to make changes to the budget or ridership reports. Informational discussion only.</p>

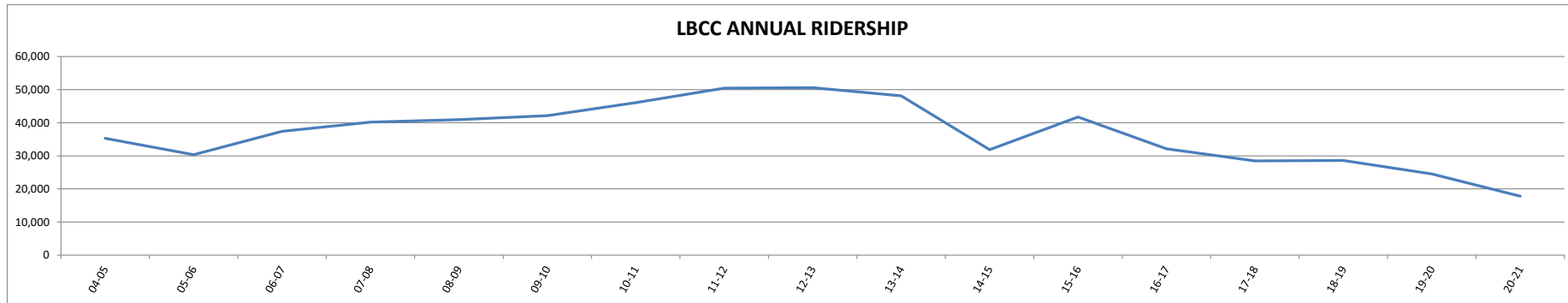
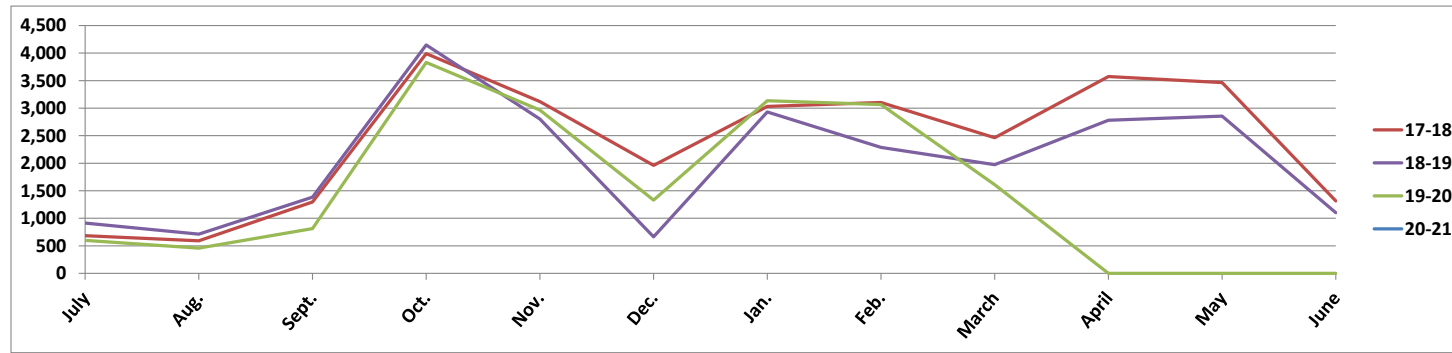
8. Updates	<p>OCWCOG Report - Linn & Benton County have started to reopen, but OCWCOG is going to stay online through June.</p> <p>Jurisdictional Updates:</p> <p>Commissioner Malone stated that the Linn-Benton Community College budget was finalized last Wednesday. There was one item as “a line item” for budget cuts, but it’s to be determined. Benton County is formally starting to open on a limited basis. No problems to report, except the issue that buses hold 30 people but can only operate with thirteen on board.</p> <p>City of Albany - Barry Hoffman stated that they are receiving expansion buses, thus do not replace, instead adds to the fleet and expands the service in July 2021. The replacement buses come in 2022, which there will be 1 bus for the Loop.</p> <p>Mark Volmert thanked Barry Hoffman and his staff for their help and assistance to help the public and the drivers to stay safe.</p>	
9. Adjournment	Commissioner Pat Malone thanked the board and staff and adjourned the meeting.	Meeting adjourned at 4:01 pm.

LINN-BENTON LOOP

LBCC PASS PROGRAM

MONTH	02-03	03-04	04-05	05-06	06-07	07-08	08-09	09-10	10-11	11-12	12-13	13-14	14-15	15-16	16-17	17-18	18-19	19-20	20-21	+/-	Ratio	
July	792	1,124	1,056	856	818	1,166	1,587	1,134	1,384	1,419	1,309	1,262	1,262	821	619	684	912	599		-313	-52.3%	
Aug.	737	422	706	731	732	981	1,146	573	791	1,322	1,158	940	911	1,008	577	591	713	458		-255	-55.7%	
Sept.	454	777	960	1,774	1,741	1,668	1,259	1,489	2,087	2,279	2,169	737	1,588	1,133	1,542	1,297	1,384	813		-571	-70.2%	
Oct.	4,155	6,251	4,411	5,373	6,314	6,374	7,050	6,695	6,574	7,500	7,074	4,947	7,217	5,789	3,950	3,991	4,148	3,831		-317	-8.3%	
Nov.	2,921	3,396	3,564	4,598	4,892	4,544	4,692	5,376	5,655	6,169	5,599	3,719	5,092	2,945	3,356	3,120	2,803	2,966		163	5.5%	
Dec.	1,326	1,706	1,071	1,175	1,151	773	2,135	1,873	1,746	1,521	1,114	1,489	2,547	1,297	1,076	1,962	663	1,329		666	50.1%	
Jan.	3,500	4,046	3,538	3,810	4,365	4,500	4,949	5,795	6,187	5,098	5,913	3,936	5,381	4,276	2,883	3,030	2,931	3,134		203	6.5%	
Feb.	3,290	4,190	3,366	4,342	4,719	4,582	4,467	5,150	5,143	5,746	5,836	2,983	4,678	3,043	4,164	3,103	2,288	3,065		777	25.4%	
March	2,407	3,320	2,877	3,456	3,569	3,253	3,441	4,250	4,675	4,426	4,036	2,489	3,613	3,448	2,379	2,464	1,974	1,610		-364	-22.6%	
April	4,205	4,419	3,826	4,248	4,772	5,350	5,121	5,855	7,049	6,234	6,063	3,788	4,973	4,348	3,037	3,573	2,779	0		-2,779	-28.6%	
May	3,689	3,954	3,658	4,998	4,857	4,962	4,188	5,443	6,512	6,174	5,574	3,549	2,946	2,902	3,290	3,465	2,856	0		-2,856	0.0%	
June	1,582	1,707	1,310	2,055	2,249	2,798	2,124	2,422	2,632	2,703	2,265	2,046	1,547	1,104	1,586	1,314	1,100	0		-1,100	0.0%	
TOTAL	29,058	35,312	30,343	37,416	40,179	40,951	42,159	46,055	50,435	50,591	48,110	31,885	41,737	32,114	28,459	28,594	24,551	17,805	0	-6,746	-37.9%	
Sat	0	0	0	0%	232	356	535	683	791	760	627	594	525	425	554	609	486	376	0		-110	-29.3%
Grand Total	29,058	35,312	30,343	37,416	40,411	41,307	42,694	46,738	51,226	51,351	48,737	32,479	42,262	32,539	29,013	29,203	25,037	18,181	0	-6,856	-37.7%	

5 days averaged; passes not counted during Try Transit Week.
 Sept 2002: College classes began approximately 2 weeks later than usual.
 July 2003: Cut 4 runs.
 Jan. 2004: 2 snow days + MLK day.

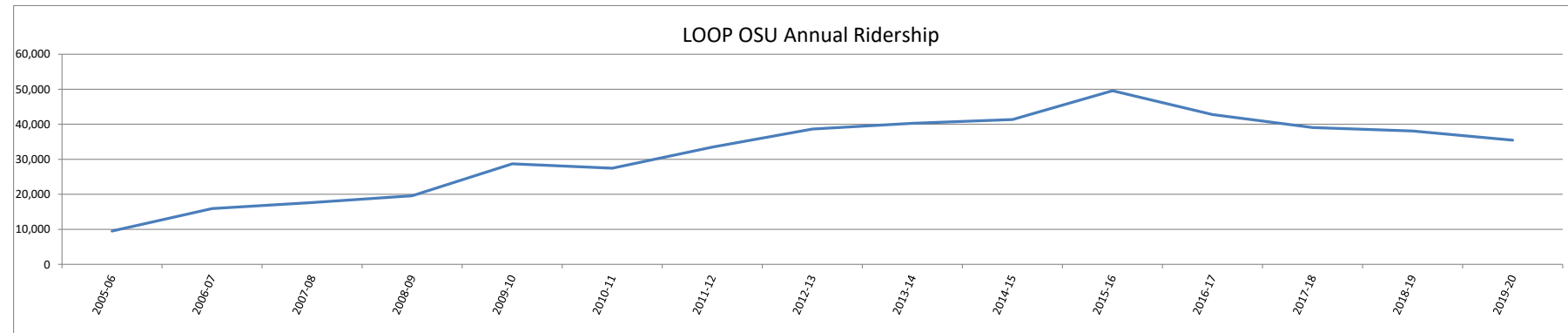
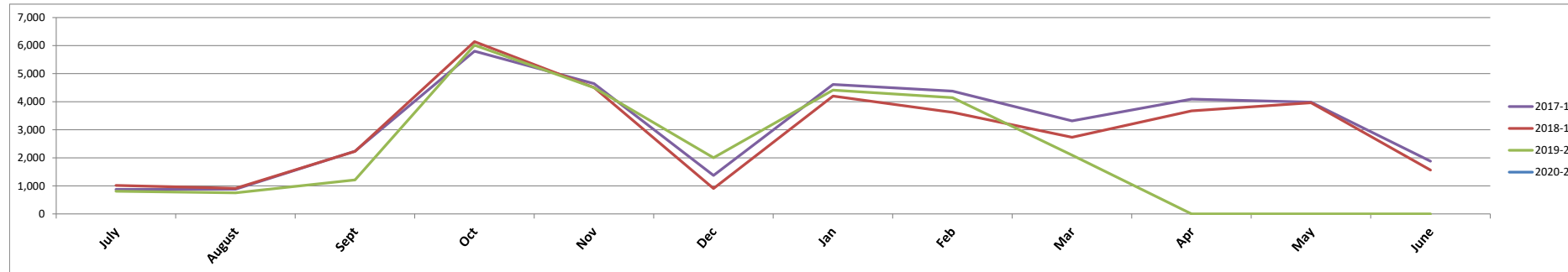


LINN-BENTON LOOP
OSU PASS PROGRAM

2020-2021

MONTH	2004-05	2005-06	2006-07	2007-08	2008-09	2009-10	2010-11	2011-12	2012-13	2013-14	2014-15	2015-16	2016-17	2017-18	2018-19	2019-20	20-21	+/-	Ratio
July	153	467	1,126	849	1,786	1,001	837	1,301	1,652	1,783	1,826	1,366	970	873	1,017	810		-207	-25.6%
August	564	590	854	869	1,262	662	849	1,390	1,582	1,439	1,337	1,202	988	880	909	750		-159	-21.2%
Sept	532	1,007	1,171	1,089	1,217	1,191	1,685	2,250	2,140	1,242	2,033	1,875	2,428	2,236	2,232	1,212		-1,020	-84.2%
Oct	1,068	1,866	2,278	2,308	3,962	3,841	4,295	5,071	5,717	6,213	7,959	6,872	5,370	5,802	6,142	6,016		-126	-2.1%
Nov	1,073	1,648	1,870	1,863	2,629	2,720	3,971	4,237	4,020	4,448	5,190	4,381	4,435	4,644	4,507	4,503		-4	-0.1%
Dec	488	730	705	719	1,379	1,259	1,587	1,297	1,239	2,035	2,770	1,893	1,343	1,372	906	2,004		1,098	54.8%
Jan	1,068	2,254	1,607	2,175	3,345	3,418	4,099	3,749	4,711	5,084	5,658	5,399	3,934	4,612	4,199	4,411		212	4.8%
Feb	975	1,615	1,623	2,092	3,108	3,046	3,499	4,123	4,619	3,949	5,223	4,890	4,991	4,379	3,623	4,144		521	12.6%
Mar	832	1,230	1,320	1,546	2,185	2,553	2,986	3,080	3,111	3,206	4,235	4,345	3,505	3,318	2,734	2,096		-638	-30.4%
Apr	1,064	1,577	1,885	2,227	3,355	3,476	4,191	4,943	4,992	5,005	6,259	4,864	4,476	4,094	3,672	0		-3,672	0.0%
May	1,029	1,822	2,045	2,238	2,842	2,942	3,529	4,763	4,443	4,362	4,647	4,038	4,540	3,984	3,965	0		-3,965	0.0%
June	661	1,102	1,168	1,621	1,654	1,335	1,931	2,440	2,036	2,588	2,442	1,636	2,107	1,881	1,561	0		-1,561	0.0%
Sub Total	9,507	15,908	17,652	19,596	28,724	27,444	33,459	38,644	40,262	41,354	49,579	42,761	39,087	38,075	35,467	25,946	0	73,542	100.0%
Saturday	0	0%	502	400	592	600	639	834	814	743	771	771	581	709	600	512	0	-88	-17.2%
Grand Total	9,507	15,908	18,154	19,996	29,316	28,044	34,098	39,478	41,076	42,097	50,350	43,532	39,668	38,784	36,067	26,458	0	-9,609	-36.3%

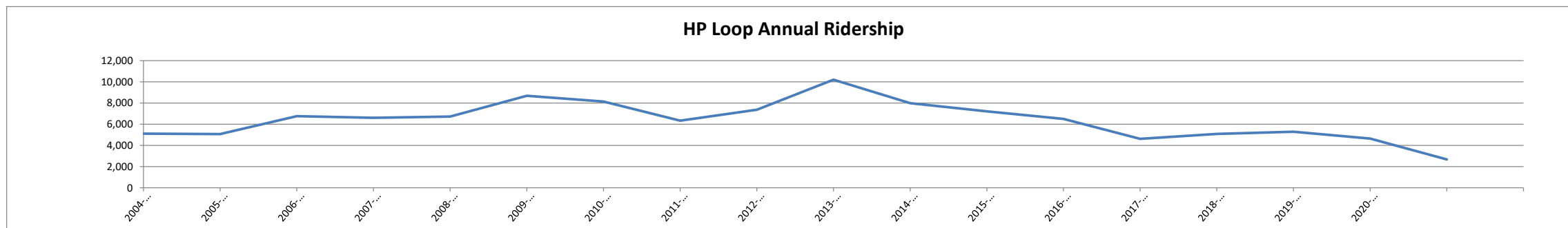
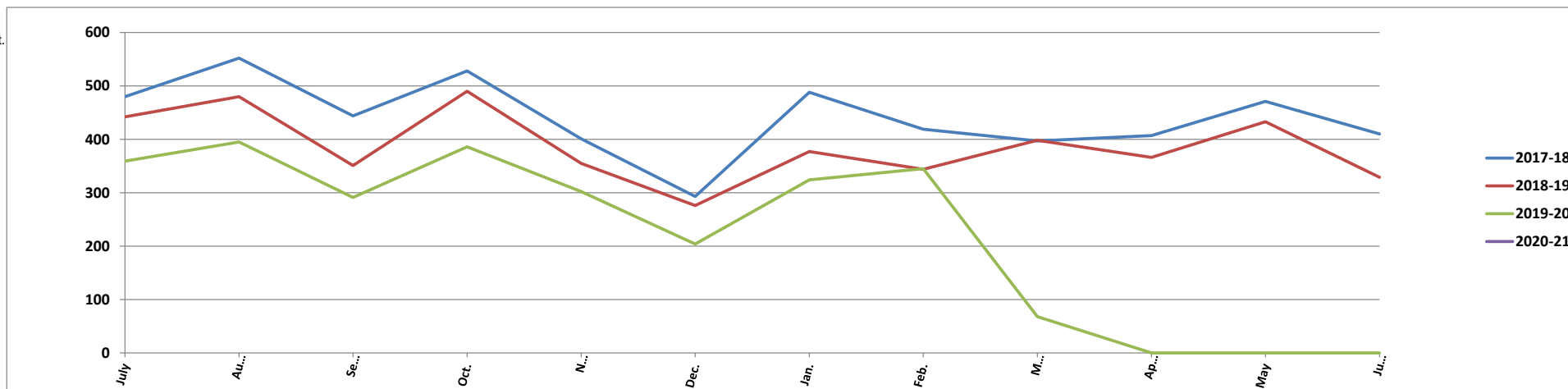
July 2004: Begin pass program
Try Transit



**LINN-BENTON LOOP
HEWLETT PACKARD
PASS PROGRAM
2020-21**

MONTH	2002-03	2003-04	2004-05	2005-06	2006-07	2007-08	2008-09	2009-10	2010-11	2011-12	2012-13	2013-14	2014-15	2015-16	2016-17	2017-18	2018-19	2019-20	2020-21	+/-	Ratio
July	336	501	540	551	580	627	1,091	496	532	766	819	592	599	458	373	480	442	359		-83	-23.1%
Aug.	423	370	525	591	655	728	954	512	554	921	699	733	518	342	435	552	480	395		-85	-21.5%
Sept.	405	385	463	712	460	656	949	536	598	802	607	699	688	375	420	444	351	291		-60	-20.6%
Oct.	467	412	551	708	524	666	847	619	544	950	755	700	696	420	444	528	490	386		-104	-26.9%
Nov.	313	262	550	528	520	709	648	547	520	732	587	553	476	328	365	401	355	302		-53	-17.5%
Dec.	307	262	377	359	385	453	473	313	401	520	398	378	406	272	259	293	276	204		-72	-35.3%
Jan.	476	363	529	570	526	700	563	631	570	842	693	733	557	371	394	488	377	324		-53	-16.4%
Feb.	500	388	480	463	499	638	443	514	583	812	723	531	535	440	374	419	344	345		1	0.3%
March	572	432	695	465	595	819	448	617	800	858	684	635	570	438	444	397	398	68		-330	-485.3%
April	494	477	707	437	577	852	550	528	685	933	664	602	515	364	527	407	366	0		-366	0.0%
May	407	547	714	605	744	775	527	533	724	1,046	688	535	459	381	568	471	433	0		-433	0.0%
June	409	666	625	612	656	1,063	645	490	848	1,017	666	516	488	425	474	410	329	0		-329	0.0%
Sub Total	5,109	5,065	6,756	6,601	6,721	8,686	8,138	6,336	7,359	10,199	7,983	7,207	6,507	4,614	5,077	5,290	4,641	2,674		-1,967	-73.6%
Saturday	0	0	0	0	5	25	6	11	6	29	18	4	5	5	11	6	30	40		10	0.0%
Grand Total	5,109	5,065	6,756	6,601	6,726	8,711	8,144	6,347	7,365	10,228	8,001	7,211	6,512	4,619	5,088	5,296	4,671	2,714		2,714	-72.1%

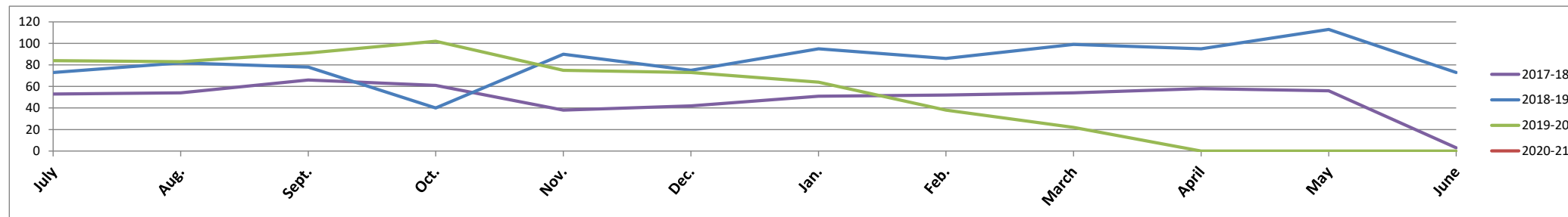
July 2003: Cut 4 runs. Sept. 2003: Runs restored.



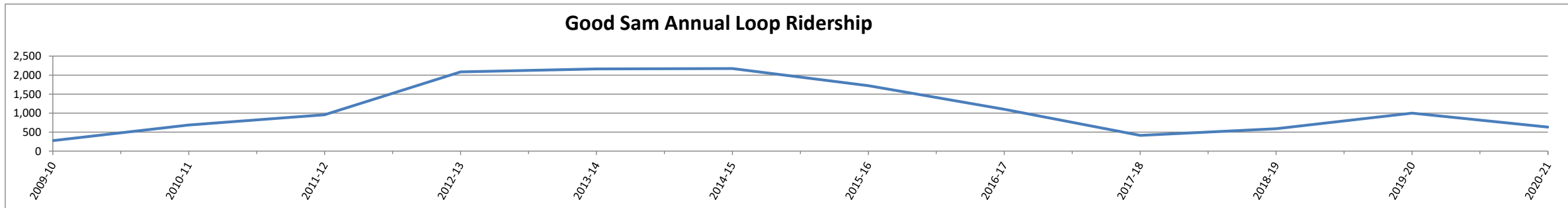
**LINN-BENTON LOOP
SAMARITAN PASS PROGRAM**

2019-2020													2020-21	+/-	Ratio
MONTH	2008-09	2009-10	2010-11	2011-12	2012-13	2013-14	2014-15	2015-16	2016-17	2017-18	2018-19	2019-20			
July		95	91	105	196	245	210	105	7	53	73	84		11	13.1%
Aug.		42	102	123	191	222	172	129	25	54	82	83		1	1.2%
Sept.		54	95	127	225	159	153	133	53	66	78	91		13	14.3%
Oct.		26	57	160	249	207	185	138	43	61	40	102		62	60.8%
Nov.	14	45	48	178	162	147	147	98	37	38	90	75		-15	-20.0%
Dec.	17	58	54	134	124	129	178	110	35	42	75	73		-2	-2.7%
Jan.	8	45	66	169	188	206	102	121	28	51	95	64		-31	-48.4%
Feb.	18	53	33	202	160	161	118	103	48	52	86	38		-48	-126.3%
March	15	57	59	220	160	189	99	84	22	54	99	22		-77	-350.0%
April	82	58	116	194	204	162	117	34	25	58	95	0		-95	0.0%
May	57	72	125	235	172	165	99	22	41	56	113	0		-113	0.0%
June	65	82	112	239	130	180	141	22	51	3	73	0		-73	0.0%
Sub Total	276	687	958	2,086	2,161	2,172	1,721	1,099	415	588	999	632		-367	-58.1%
Saturday	3	2	5	16	34	14	11	11	13	2	7	5		-745	-40.0%
Grand Total	279	689	963	2,102	2,195	2,186	1,732	1,110	428	590	1,006	637		-1,112	-57.9%

*This does not include the Saturday Loop.



Good Sam Annual Loop Ridership

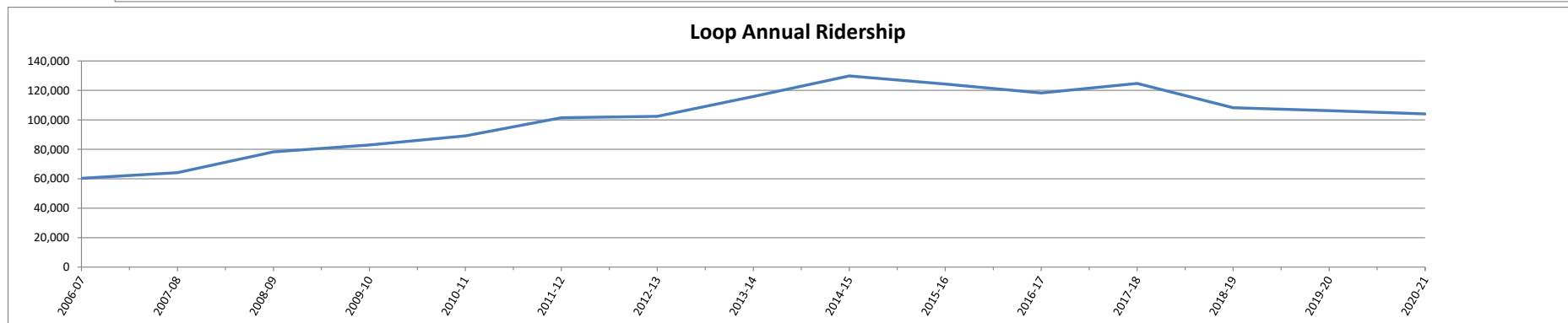
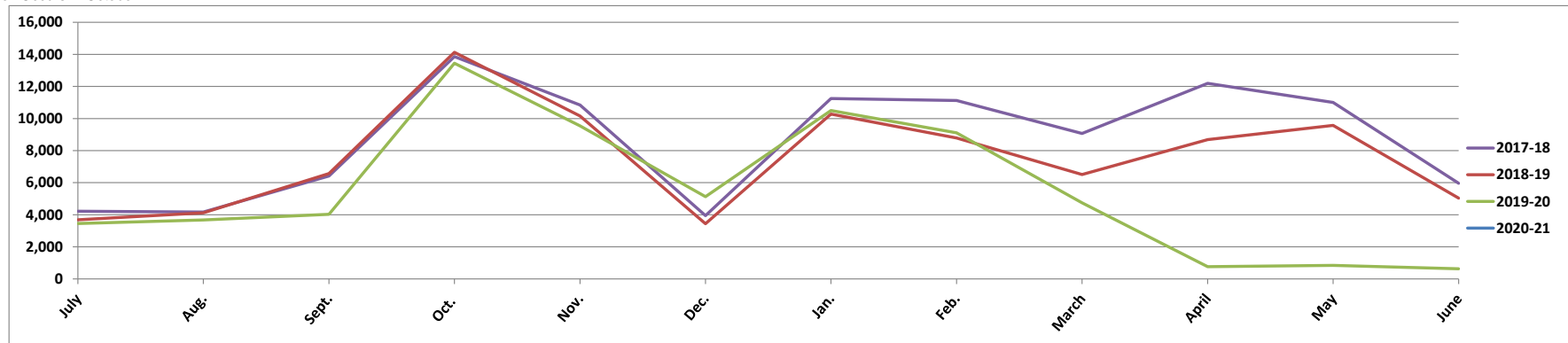


LINN-BENTON LOOP
WEEKDAY RIDERSHIP
REGULAR LOOP PLUS LOOP EXPRESS

MONTH	2002-03	2003-04	2004-05	2005-06	2006-07	2007-08	2008-09	2009-10	2010-11	2011-12	2012-13	2013-14	2014-15	2015-16	2016-17	2017-18	2018-19	2019-20	2020-21	+/-	Ratio
July	2,794	3,260	3,237	3,319	3,692	3,975	6,391	4,709	4,781	5,911	6,036	6,045	6,106	5,512	3,606	4,223	3,690	3,450		-240	-7.0%
Aug.	2,859	2,249	3,143	3,663	3,912	4,140	5,245	3,599	4,261	6,502	5,977	5,331	4,798	4,562	3,430	4,174	4,122	3,680		-442	-12.0%
Sept.	2,425	2,812	3,526	4,240	4,920	4,992	5,614	5,125	6,442	8,303	7,293	4,621	6,751	5,228	6,314	6,418	6,570	4,034		-2,536	-62.9%
Oct.	6,973	8,460	7,934	10,139	11,093	11,539	14,446	13,013	13,527	16,046	16,490	16,516	18,648	15,384	13,712	13,861	14,128	13,447		-681	-5.1%
Nov.	4,800	5,342	6,705	8,422	8,681	8,640	9,643	10,056	11,917	13,440	12,245	12,095	11,667	11,153	11,557	10,843	10,156	9,539		-617	-6.5%
Dec.	3,178	3,412	3,145	3,717	3,338	3,310	5,646	5,393	5,625	5,598	4,600	6,418	7,496	5,860	4,163	3,946	3,442	5,129		1,687	32.9%
Jan.	6,021	5,895	6,530	7,684	8,204	9,075	10,557	11,888	12,667	12,462	14,039	13,599	13,391	11,979	10,439	11,241	10,276	10,500		224	2.1%
Feb.	6,666	6,175	5,868	7,990	8,299	9,152	9,589	10,608	11,415	13,078	13,188	10,736	12,417	10,205	11,126	11,122	8,787	9,113		326	3.6%
March	4,736	5,714	5,907	6,801	7,096	7,232	7,830	9,314	10,529	10,733	9,846	9,521	10,281	10,350	9,270	9,072	6,510	4,743		-1,767	-37.3%
April	6,766	6,836	7,172	7,886	8,952	10,437	11,054	11,963	13,566	14,659	14,149	13,926	13,892	11,548	11,365	12,197	8,687	762		-7,925	-1040.0%
May	5,902	6,206	6,764	8,885	9,237	9,753	9,219	10,487	13,261	14,507	13,320	12,161	11,885	10,555	11,700	11,001	9,570	845		-8,725	0.0%
June	3,937	3,955	4,185	5,474	5,575	6,927	6,201	6,225	7,922	8,604	7,202	7,311	7,461	5,883	9,616	5,961	5,039	632		-4,407	0.0%
Sub Total*	57,057	60,316	64,116	78,220	82,999	89,172	101,435	102,380	115,913	129,843	124,385	118,280	124,793	108,219	106,298	104,059	90,977	65,874	0	-25,103	-38.1%
Saturday	0	0	0	0	1,938	2,643	2,931	3,325	3,804	4,459	4,108	3,977	3,923	3,376	3,629	3,871	3,894	3,078		-816	477.2%
Grand Total	57,057	60,316	64,116	78,220	84,937	91,815	104,366	105,705	119,717	134,302	128,493	122,257	128,716	111,595	109,927	107,930	94,871	68,952	0	-25,919	366.0%

Loop plus loop express

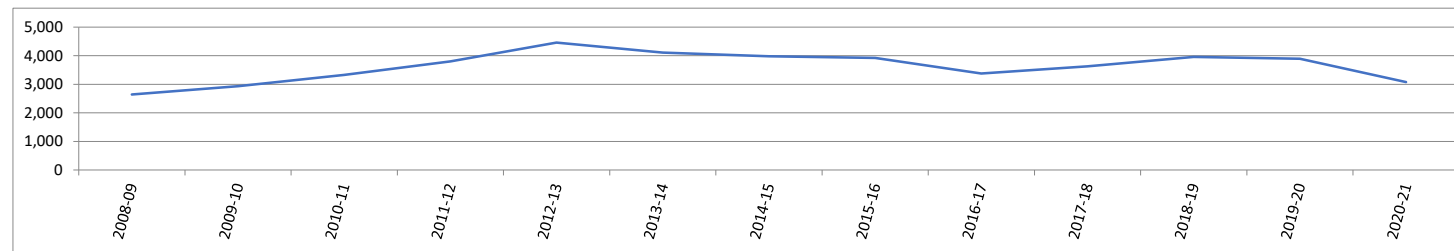
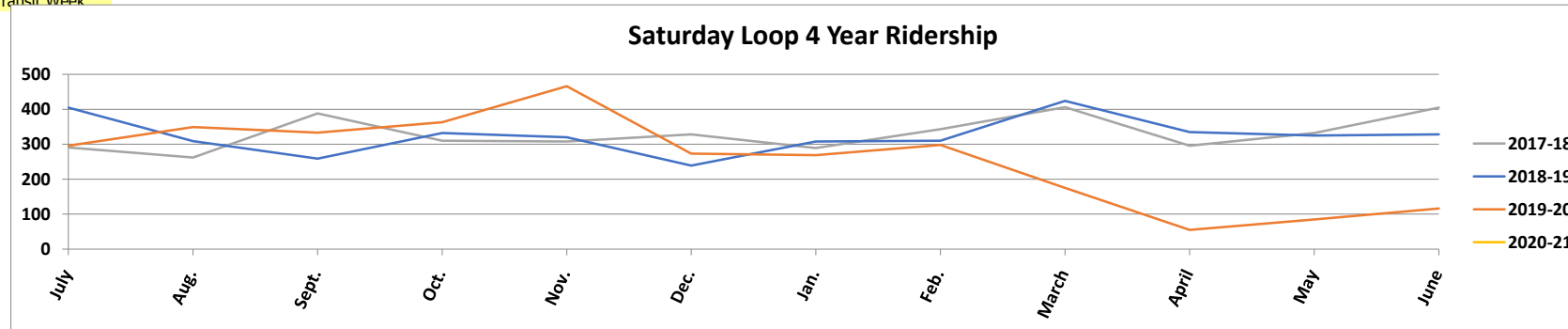
*Reg Loop and Express Loop
**Try Transit Week Occurs in October



**LINN-BENTON LOOP
SATURDAY SERVICE
2019-2020**

MONTH	2006-07	2007-08	2008-09	2009-10	2010-11	2011-12	2012-13	2013-14	2014-15	2015-16	2016-17	2017-18	2018-19	2019-20	2020-21	+/-	Ratio
July		93	147	160	250	356	252	262	274	195	315	291	405	296		-109	-36.8%
Aug.	90	245	241	227	235	339	267	400	353	325	219	262	309	349		40	11.5%
Sept.	185	229	227	209	294	323	494	324	317	247	259	388	259	333		74	22.2%
Oct.	212	171	239	303	349	497	321	307	436	375	407	310	332	363		31	8.5%
Nov.	165	217	334	388	350	366	318	444	346	282	334	308	320	466		146	31.3%
Dec.	199	226	184	161	180	353	407	232	244	239	333	328	239	273		34	12.5%
Jan.	160	175	358	356	331	354	265	309	344	314	206	289	308	269		-39	-14.5%
Feb.	177	235	235	264	345	369	377	227	298	251	258	343	310	298		-12	-4.0%
March	206	257	232	334	349	399	385	421	342	271	276	406	424	175		-249	-142.3%
April	176	253	242	320	472	337	294	323	295	333	362	296	335	55		-280	-509.1%
May	147	275	251	357	340	367	319	400	403	246	339	332	325	85		-240	-282.4%
June	221	267	241	246	309	399	409	328	271	298	321	405	328	116		-212	-182.8%
Totals	1,938	2,643	2,931	3,325	3,804	4,459	4,108	3,977	3,923	3,376	3,629	3,958	3,894	3,078	0	-816	-1.6%

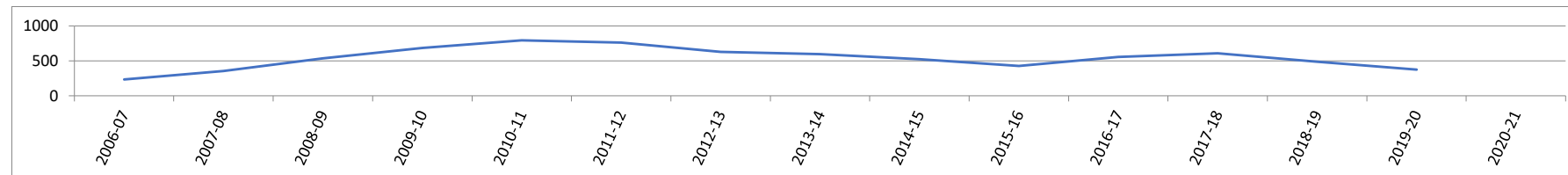
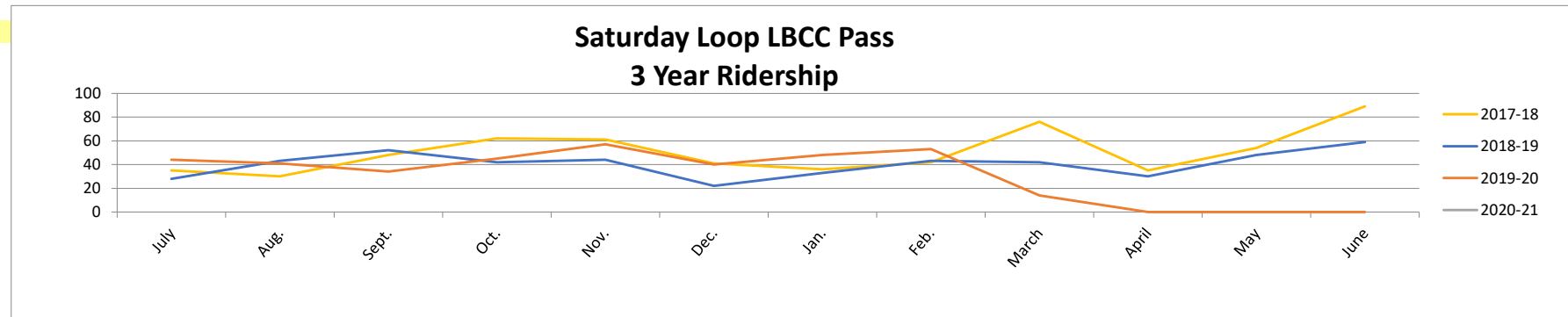
Oct. Try Transit Week



**LINN-BENTON LOOP
LBCC PASS PROGRAM
SATURDAY SERVICE 2019-2020**

MONTH	2006-07	2007-08	2008-09	2009-10	2010-11	2011-12	2012-13	2013-14	2014-15	2015-16	2016-17	2017-18	2018-19	2019-20	2020-21	+/-	Ratio
July		8	16	18	37	44	56	51	35	19	36	35	28	44		16	36.4%
Aug.	12	2	30	31	33	48	28	48	42	36	18	30	43	41		-2	-4.9%
Sept.	17	18	31	22	35	44	56	43	35	27	29	48	52	34		-18	-52.9%
Oct.	22	12	23	46	72	66	38	48	56	39	58	62	42	45		3	6.7%
Nov.	28	16	50	74	69	75	55	70	57	41	43	61	44	57		13	22.8%
Dec.	33	37	50	41	40	84	57	32	37	23	54	41	22	40		18	45.0%
Jan.	19	24	74	66	92	69	61	61	43	34	33	36	33	48		15	31.3%
Feb.	19	43	48	70	82	68	53	31	45	41	54	42	43	53		10	18.9%
March	23	54	50	95	84	72	68	52	40	31	47	76	42	14		-28	-200.0%
April	19	58	53	85	86	63	39	63	52	54	64	35	30	0		-5	-16.7%
May	13	42	58	83	92	45	50	59	48	40	52	54	48	0		-6	-12.5%
June	27	42	52	52	69	82	66	36	35	40	66	89	59	0		-59	#DIV/0!
Totals	232	356	535	683	791	760	627	594	525	425	554	609	486	376		-123	-32.7%

Oct. Try Transit Week

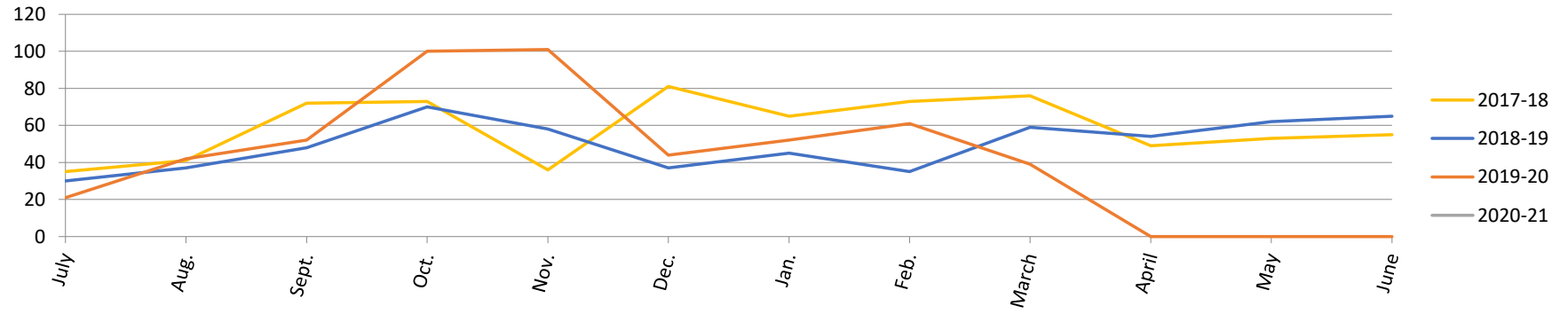


OSU PASS PROGRAM

SATURDAY SERVICE 2019-2020

MONTH	2006-07	2007-08	2008-09	2009-10	2010-11	2011-12	2012-13	2013-14	2014-15	2015-16	2016-17	2017-18	2018-19	2019-20	2020-21	+/-	Ratio
July		19	35	27	21	37	38	40	34	39	43	35	30	21		-9	-42.9%
Aug.	15	37	46	28	47	37	45	75	42	58	23	41	37	42		5	11.9%
Sept.	50	23	30	32	69	62	123	72	64	41	33	72	48	52		4	7.7%
Oct.	48	24	44	59	65	125	89	51	80	50	66	73	70	100		30	30.0%
Nov.	52	24	50	53	78	65	54	98	92	38	47	36	58	101		43	42.6%
Dec.	45	30	27	32	18	47	74	43	52	37	54	81	37	44		7	15.9%
Jan.	69	28	89	92	59	68	50	71	61	71	35	65	45	52		7	13.5%
Feb.	64	36	48	51	62	69	70	37	55	10	54	73	35	61		26	42.6%
March	45	40	43	62	48	81	98	78	80	66	57	76	59	39		-20	-51.3%
April	43	28	52	57	81	60	61	72	72	61	61	49	54	0		5	0.0%
May	25	53	73	83	60	91	52	48	88	35	53	53	62	0		9	0.0%
June	46	58	55	24	31	92	60	58	51	42	55	55	65	0		0	0.0%
Totals	502	400	592	600	639	834	814	743	771	548	581	709	600	512		-109	-17.2%

Oct. Try Transit Week

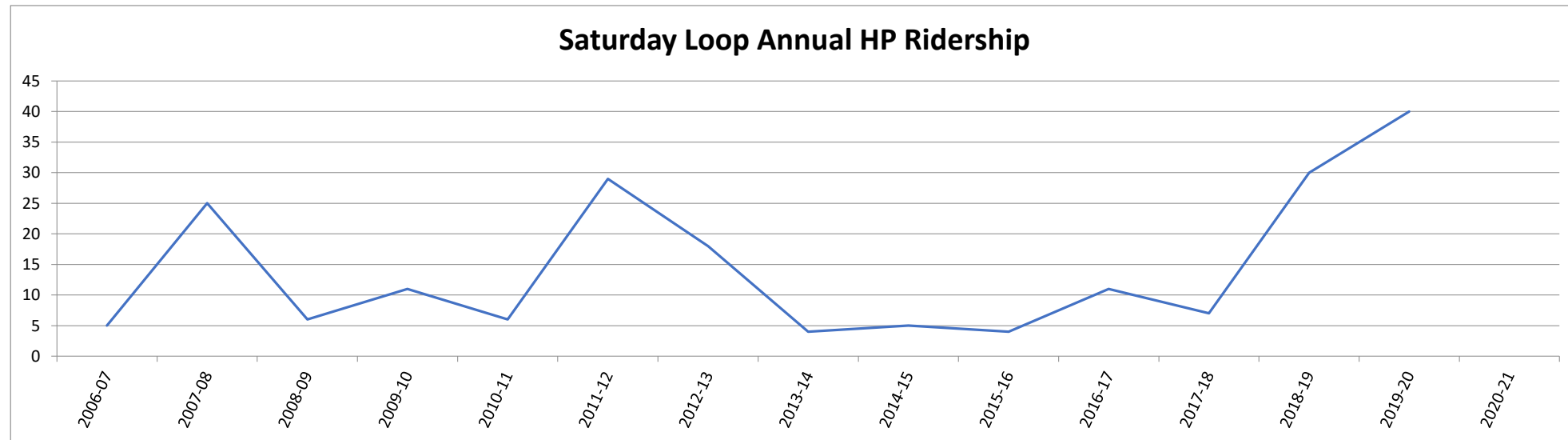


Saturday Loop OSU Annual Ridership



LINN BENTON LOOP HP PASS PROGRAM SATURDAY SERVICE 2020-2021

MONTH	2006-07	2007-08	2008-09	2009-10	2010-11	2011-12	2012-13	2013-14	2014-15	2015-16	2016-17	2017-18	2018-19	2019-20	2020-21	+/-	Ratio
July		0	0	0	0	0	1	3	2	2	2	1	1	9		8	88.89%
Aug.	0	0	0	1	0	0	7	0	3	0	2	0	0	9		9	100.00%
Sept.	1	0	0	3	0	0	2	0	0	2	3	0	0	8		8	100.00%
Oct.	2	0	0	2	0	1	3	1	0	0	0	0	4	3		-1	-33.33%
Nov.	0	1	1	2	0	0	3	0	0	0	0	3	1	8		7	87.50%
Dec.	2	3	0	1	0	0	0	0	0	0	2	0	0	2		2	100.00%
Jan.	0	5	4	0	0	1	1	0	0	0	2	0	6	0		-6	0.00%
Feb.	0	4	0	0	1	3	0	0	0	0	0	0	0	1		1	100.00%
March	0	6	0	0	0	6	0	0	0	0	0	0	6	0		-6	0.00%
April	0	3	0	2	3	4	0	0	0	0	0	0	0	0		0	0.00%
May	0	2	1	0	2	9	0	0	0	0	0	2	3	0		-3	#DIV/0!
June	0	1	0	0	0	5	1	0	0	0	0	1	9	0		-9	#DIV/0!
Totals	5	25	6	11	6	29	18	4	5	4	11	7	30	40		23	25.00%

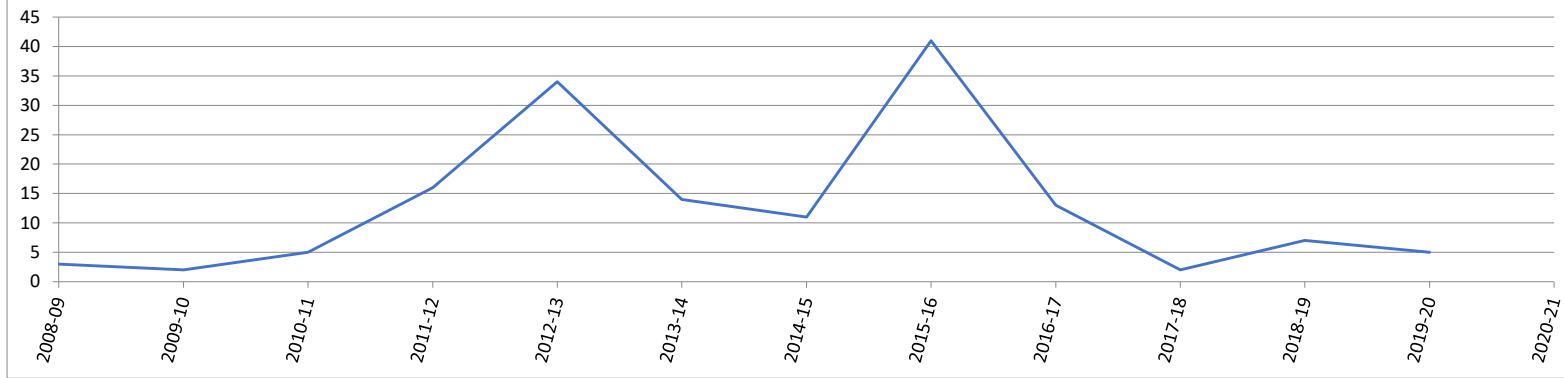


LINN-BENTON LOOP SAMARITAN PASS PROGRAM SATURDAY SERVICE 2019-2020

MONTH	2008-09	2009-10	2010-11	2011-12	2012-13	2013-14	2014-15	2015-16	2016-17	2017-18	2018-19	2019-20	2020-21	+/-	Ratio
July	0	0	2	0	0	3	2	2	2	0	3	1		-2	#####
Aug.	0	0	0	0	4	4	1	6	1	0	0	0		0	0.00%
Sept.	0	0	0	0	3	0	1	6	0	0	1	0		-1	0.00%
Oct.	0	0	2	0	3	2	2	3	0	0	0	1		1	100.00%
Nov.	1	0	0	2	3	3	0	10	4	0	1	3		2	66.67%
Dec.	0	0	0	3	3	1	0	1	4	0	0	0		0	0.00%
Jan.	1	0	1	5	3	0	0	1	0	0	0	0		0	0.00%
Feb.	0	0	0	0	0	0	0	1	0	0	0	0		0	0.00%
March	1	0	0	4	5	0	0	3	0	2	0	0		0	0.00%
April	0	0	0	0	4	1	2	4	0	0	0	0		0	0.00%
May	0	0	0	1	5	0	2	3	2	0	0	0		0	0.00%
June	0	2	0	1	1	0	1	1	0	0	2		-2	#DIV/0!	
Totals	3	2	5	16	34	14	11	41	13	2	7	5		5	-0.4

Oct. Try Transit Week

Saturday Loop Sam Annual Ridership



07/28/2020
08:16:52City of Albany, OR
FLEXIBLE PERIOD REPORT
PP 06PAGE 1
gflxlrpt

FROM 2020 10 TO 2020 13

ACCOUNTS FOR:	ORIGINAL	TRANFRS/	REVISED	ACTUALS	ENCUMBRANCES	AVAILABLE	PCT
213 PUBLIC TRANSIT	APPROP	ADJSTMTS	BUDGET			BUDGET	USED
<hr/>							
21340105 213 LINN-BENTON LOOP							
21340105 420035 FTA SECTION 5310 GRANT	-27,500	0	-27,500	-14,160.00		-13,340.00	51.5%
21340105 420045 FTA SECTION 5307	-333,200	0	-333,200	-82,707.00		-250,493.00	24.8%
21340105 428020 SPECIAL TRANSIT FUND: LINN	-24,000	0	-24,000	-11,520.00		-12,480.00	48.0%
21340105 428025 SPECIAL TRANSIT FUND: BENT	-23,000	0	-23,000	.00		-23,000.00	.0%
21340105 428120 STIF - LINN COUNTY	-12,500	0	-12,500	.00		-12,500.00	.0%
21340105 428125 STIF - BENTON COUNTY	-12,500	0	-12,500	-105,125.00		92,625.00	841.0%
21340105 428200 LBCC PARTNERSHIP	-120,800	0	-120,800	.00		-120,800.00	.0%
21340105 428205 OSU PARTNERSHIP	-120,800	0	-120,800	.00		-120,800.00	.0%
21340105 435000 BUS FARES	-26,000	0	-26,000	-776.46		-25,223.54	3.0%
21340105 480100 INTEREST	-300	0	-300	-128.48		-171.52	42.8%
21340105 510010 WAGES & SALARIES	237,600	0	237,600	46,479.49		191,120.51	19.6%
21340105 520010 TEMPORARY EMPLOYEES	36,100	0	36,100	2,423.51		33,676.49	6.7%
21340105 530010 OVERTIME	3,300	0	3,300	.00		3,300.00	.0%
21340105 540050 UNEMPLOYMENT CLAIMS	800	0	800	.00		800.00	.0%
21340105 560001 EMPLOYER MEDICAL	0	0	0	15,543.28		-15,543.28	.0%
21340105 560005 EMPLOYER DENTAL	0	0	0	1,160.48		-1,160.48	.0%
21340105 560008 EMPLOYER VISION	0	0	0	468.39		-468.39	.0%
21340105 560010 EMPLOYER PAID BENEFITS	244,600	0	244,600	7,320.59		237,279.41	3.0%
21340105 560020 PERS	0	0	0	16,829.04		-16,829.04	.0%
21340105 560030 HRA VEBA	0	0	0	240.01		-240.01	.0%
21340105 600115 INSURANCE & BONDS	8,800	0	8,800	-7,617.63		16,417.63	86.6%
21340105 600400 CONTRACTUAL SERVICES	500	0	500	-340.70		2,472.54	394.5%
21340105 610005 ADVERTISING & PUBLICATIONS	0	0	0	-1,116.27		1,116.27	.0%
21340105 610100 DUPLICATION & FAX	1,300	0	1,300	102.14		1,300.00	.0%
21340105 610405 MATERIALS & SUPPLIES	3,000	0	3,000	-1,445.53		4,660.13	55.3%
21340105 610545 PRINTING & BINDING	800	0	800	.00		800.00	.0%
21340105 610750 UNIFORMS	500	0	500	.00		500.00	.0%
21340105 610800 VEHICLE FUEL CHARGES	40,000	0	40,000	4,861.30		35,138.70	12.2%
21340105 630000 ELECTRICITY	0	0	0	-627.43		949.21	.0%
21340105 630005 NATURAL GAS	0	0	0	-48.37		11.96	.0%
21340105 630010 TELEPHONE	0	0	0	-24.86		24.86	.0%
21340105 630400 WATER SERVICE	0	0	0	-427.59		427.59	.0%
21340105 630410 STORMWATER SERVICE CHARGES	0	0	0	-57.78		57.78	.0%
21340105 653600 MAINT: VEHICLE	41,100	0	41,100	30,266.32		12,010.82	70.8%
21340105 660200 CS: CENTRAL SERVICE	38,500	0	38,500	9,625.03		28,874.97	25.0%
21340105 660400 CS: EQUIPMENT REPLACEMENT	3,000	0	3,000	750.00		2,250.00	25.0%
21340105 660500 CS: FLEXIBLE SPENDING ADMI	200	0	200	42.55		157.45	21.3%
21340105 662500 PW: ADMINISTRATION	31,900	0	31,900	3,460.68		28,439.32	10.8%

07/28/2020
08:16:52City of Albany, OR
FLEXIBLE PERIOD REPORT
PP 06PAGE 2
gflxrpt

FROM 2020 10 TO 2020 13

ACCOUNTS FOR:
213 PUBLIC TRANSIT

	ORIGINAL APPROP	TRANFRS/ ADJSTMTS	REVISED BUDGET	ACTUALS	ENCUMBRANCES	AVAILABLE BUDGET	PCT USED
21340105 665400 PHYSICAL EXAMS & MEDICALS	300	0	300	184.00		116.00	61.3%
21340105 690000 RESERVE: OPERATING	8,300	0	8,300	.00		8,300.00	.0%
21340105 700000 CAPITAL EQUIPMENT	0	880,000	880,000	.00		-93,700.50	110.6%
TOTAL 213 LINN-BENTON LOOP	0	880,000	880,000	-86,366.29		-3,923.12	%
TOTAL PUBLIC TRANSIT	0	880,000	880,000	-86,366.29		-3,923.12	%
TOTAL REVENUES	-700,600	0	-700,600	-214,416.94		-486,183.06	
TOTAL EXPENSES	700,600	880,000	1,580,600	128,050.65		482,259.94	



07/28/2020
08:16:52

City of Albany, OR
FLEXIBLE PERIOD REPORT
PP 06

PAGE 3
gflxrpt

FROM 2020 10 TO 2020 13

	ORIGINAL APPROP	TRANFRS/ ADJSTMTS	REVISED BUDGET	ACTUALS	ENCUMBRANCES	AVAILABLE BUDGET	PCT USED
--	--------------------	----------------------	-------------------	---------	--------------	---------------------	-------------

GRAND TOTAL	0	880,000	880,000	-86,366.29		-3,923.12	%
-------------	---	---------	---------	------------	--	-----------	---



07/28/2020
08:16:52

City of Albany, OR
FLEXIBLE PERIOD REPORT
PP 06

PAGE 4
gflxrpt

REPORT OPTIONS

Sequence	Field #	Total	Page Break	
Sequence 1	1	Y	Y	From Yr/Per: 2020/10
Sequence 2	9	Y	N	To Yr/Per: 2020/13
Sequence 3	0	N	N	Budget Year: 2020
Sequence 4	0	N	N	Print totals only: N

Report title:

FLEXIBLE PERIOD REPORT
PP 06

Includes accounts exceeding 0% of budget.

Print Full or Short description: F

Print full GL account: N

Sort by full GL account: N

Print Revenues-Version headings: N

Print revenue as credit: Y

Print revenue budgets as zero: N

Format type: 1

Double space: N

Suppress zero bal accts: Y

Amounts/totals exceed 999 million dollars: N

Roll projects to object: N

Print journal detail: N

From Yr/Per: 2020/12

To Yr/Per: 2020/13

Include budget entries: N

Incl encumb/liq entries: N

Sort by JE # or PO #: J

Detail format option: 1

Multiyear view: D