

CONNECTIONS



ENRICHING LIVES
CREATING COMMUNITY

SUMMER 2024

489 WATER AVENUE NW ALBANY, OR 97321 | (541) 917-7760
OPEN MONDAY-FRIDAY | 8:30AM - 4:30PM

MOVIE MATINEE



PROUDLY PRESENTED BY:
 **Home
Instead.**
To us, it's personal

July 12



Luck

A down-on-her-luck orphan has a chance encounter with a mysterious cat whose power takes the form of a coin: a coin of Luck. After this chance encounter, this woman and the cat will forever change the realm of Luck itself. But will their good fortunes run out?

August 16



Wonka

Dive into the backstory of the eccentric chocolatier Willy Wonka, exploring the journey to establish his world-renowned chocolate empire. Willy attempts to turn his wildest dreams into reality with determination and unexpected help from new friends.

July 26



The Goonies

A group of adventurous kids embark on a treasure hunt to save their homes from foreclosure. Along the way, they encounter booby traps, pirates, and a legendary treasure map, testing their friendship and bravery in a thrilling quest for hidden riches.

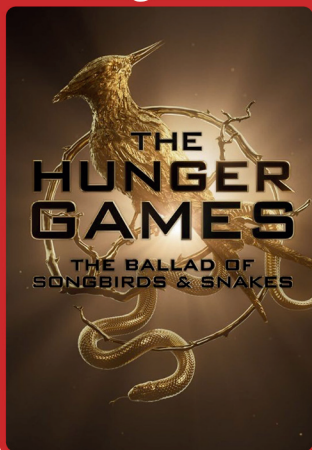
September 13



Irish Wish

When the love of her life gets engaged to her best friend, Maddie puts her feelings aside to be a bridesmaid in Ireland. Days before the wedding, Maddie makes a spontaneous wish for true love, and the next morning she wakes up as the bride-to-be.

August 9



The Hunger Games

The Ballad of Songbirds & Snakes

Explore President Snow's early years as a mentor in the 10th Hunger Games, where he faces moral dilemmas while guiding his tribute, Lucy Gray Baird, through the deadly arena, shaping his path toward tyranny.

September 27



An Affair to Remember

A timeless romance following a chance encounter and a promised reunion atop the Empire State Building, where love faces unforeseen challenges that test its enduring strength.

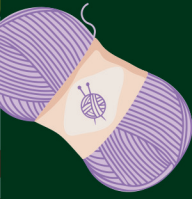
Riverfront Community Center | Fridays @ 1:00 P.M.



FREE DROP-IN EVENTS

DON'T MISS OUT ON ALL THE FUN!

KNITTING CLUB
THURSDAYS
10 A.M.



MAHJONG
THURSDAYS
1 P.M.



HAND & FOOT
FRIDAYS
12 P.M.



CANASTA & BOARD GAMES
FRIDAYS
1 P.M.



TIMES ARE SUBJECT TO CHANGE

MONTHLY BIRTHDAY CELEBRATION!



JOIN US AS WE CELEBRATE FRIENDS OF THE RIVERFRONT COMMUNITY CENTER EACH MONTH WITH A FREE BIRTHDAY CUPCAKE!



FIRST FRIDAY OF EVERY MONTH AT 1:00 P.M.

Proudly Supported by:



Explore, Engage, and Connect!

These opportunities will help you foster connection, explore a new place, or engage with new friends! Check out all our upcoming opportunities now through June.

Must register in advance online or by calling 541-917-7777

LINE DANCING FUN!

Join us and get ready to kick up your heels and dive into the joy of line dancing! Come learn some classic moves and sassy steps that'll have you strutting with style in no time.

Get ready to groove, laugh, and master some toe-tapping moves. No experience needed—just bring your enthusiasm and let's make some unforgettable memories together!

Tuesday, June 11th, 4-6 p.m. • Riverfront Community Center
No Cost

FIELD TRIP

Hike the beautiful Ten Falls Canyon Trail in Oregon's largest state park past ten waterfalls ranging in height from 27 feet to 178 feet; 4 of them you can even walk behind! There are plenty of benches for rest and the trail is extremely well maintained. Please bring a daypack and water. We will provide a sack lunch that includes a sandwich (please choose from Ham, Turkey, or Veggie), chips, and a cookie. Fee includes transportation only. This trip is limited to the first 14 participants to register. Deadline to register: June 6.

Difficulty: Easy; Length: 6 miles.

Thursday, June 13th, 9 a.m.-3:30 p.m. • Departs Carino's at 9 a.m.
\$10 (in-city)/\$15

WE PARTNERED WITH COUNCIL OF GOVERNMENTS TO BRING LOW OR NO COST EXPERIENCES TO OLDER ADULTS, 55+. THESE CLASSES AND EXPERIENCES WILL HELP REDUCE THE FEELING OF ISOLATION, DEPRESSION, AND INCREASE THE PHYSICAL AND MENTAL HEALTH OF OUR OLDER ADULT POPULATION.



VISIT THE RIVERFRONT COMMUNITY CENTER ON THESE SPECIALTY DAYS AND CELEBRATE WITH FREE TREATS!



**FRENCH FRY FRIDAY
JULY 19 AT 12:30 P.M.**



**CREAMSICLE DAY
AUGUST 14 AT 12:30 P.M.**

PROUDLY
SUPPORTED BY:



**Home
Instead.**

To us, it's personal



**WAFFLE WEDNESDAY
SEPTEMBER 4 AT 12:30 P.M.**



**PULLED PORK DAY
OCTOBER 10 AT 12:30 P.M.**

Supplies limited to first 40 attendees

RIVERFRONT COMMUNITY CENTER COFFEE SHOP

COFFEE

TEA

HOT CHOCOLATE

SODA

WATER

SPARKLING WATER

\$1

LATTE

MOCHA

CAPPUCCINOS

\$2

SNACKS

- RICE KRISPIES TREATS
- CHIPS
- COOKIES
- NUTS
- GRANOLA BARS
- AND MORE!

\$1

OPEN MONDAY - FRIDAY

8:30 A.M. - 4:30 P.M.

VISIT THE RIVERFRONT GIFT SHOP

DISCOVER HANDMADE
WONDERS THAT REFLECT
THE HEART OF OUR
COMMUNITY, FROM
INTRICATELY DESIGNED
DECOR TO PERSONALIZED
GIFTS.

OPEN MONDAY-FRIDAY FROM 8:30 A.M.-4:30 P.M.

ADULT CLASSES

HOW TO REGISTER FOR CLASSES:

Registration locations and hours:

Online Registration
**www.albanyparksand
recreation.org**
24/7, 365 days a year

**Riverfront
Community Center
(RCC)**
489 Water Ave NW
541-917-7760
Monday-Friday
8:30 a.m. - 4:30 p.m.

Program Locations:

Albany Community Pool (ACP)
2150 36th Ave SE

Albany Tennis Club (ATC)
1423 27th Ave SW

Brigitte's Place Fine Fabrics
325 1st Ave NW

Riverfront Community Center (RCC)
489 Water Ave NW

Swanson Park Action Center
705 Railroad St SE

- Registration is required 5 days prior to start date unless otherwise indicated.
- You must pay for the class and applicable lab fees at the time of registration unless otherwise indicated.
- You can register online or over the phone with Visa or MasterCard.
- To register for LBCC classes call 541-917-4840 or go online at linnbenton.edu/register. You can also register in person at RCC if you have an email address and are paying with a Visa or Mastercard.



Refund Policy: Our mission is to provide quality recreational experiences that are financially sustainable. Activities, programs, and classes must meet minimum enrollments in order to be offered. If Parks & Recreation for any reason cancels an activity, program, or class a full refund will be issued.

Classes & Programs: A participant can receive a full refund, less a \$5 processing fee, if they notify Parks & Recreation five business days prior to the start of the class. After five days, a credit will be given. If a program is less than \$15 only a credit will be given if participant cancels.

Trips & Tours: Participants will only be given refunds if a replacement participant is found, due to hard costs associated with trips.

LBCC Partnership Classes: Call 541-917-4840 or go to linnbenton.edu/register for all information regarding cancelations and refunds.

Pricing: Fees listed on the left reflect a reduced price for in-city Albany residents. Those who live outside the city limits pay full tuition. You may purchase an out-of-city user card (\$40 individual/\$80 family) which allows you to pay in-city rates for one year.

For all of our policies visit our website at www.albanyparksandrecreation.org or call 541-917-7777.

ADULT CLASSES

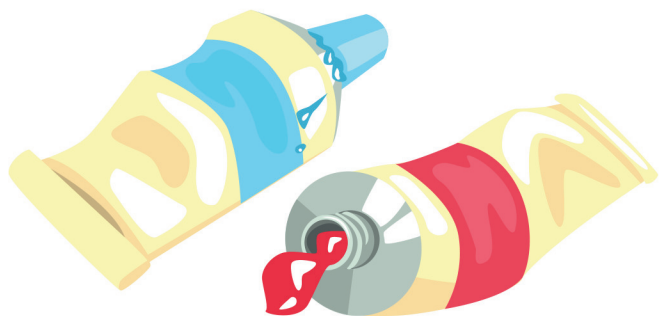
EXPRESS YOUR CREATIVITY

Everyone is creative! Join us to try your hand at a variety of artistic endeavors, and you might just find a talent you never knew you had. Stretch your creative ability as you bring your ideas to life. Not many things bring as much satisfaction as making something with your own hands. Whether you'd like to decorate your house with a personal flair, or you want to create something for a loved one – we have a class for you!

ACRYLIC PAINTING FOR FUN (LBCC #16738)

This course is designed for all skill levels, no experience is required, and you can use whatever acrylic paints and brushes you have already. The goal of the class is to have fun and experience the versatility of the medium of acrylics. See supplies to bring to class: linnbenton.edu/supplies.

Tu 6/25-8/27 1:30-3:20 p.m.
RCC \$129 Walz



ADVANCED/INTERMEDIATE WATERCOLOR PAINTING (LBCC #16312)

Delight in the color, brilliance, and challenge of watercolor painting. Learn composition, perspective, reflections, shadows, and color theory with new and challenging techniques. This class is for those who are already knowledgeable of the basics of watercolor. See supplies to bring to class: linnbenton.edu/supplies.

W 6/26-8/28 9:30-11:20 a.m.
RCC \$129 Hansen



Want to sign up for a class, trip or tour? Create an account in 4 easy steps!

1 SIGN UP!

Go to albanyparksandrecreation.org. Click "Register for an activity or class" then select an area of interest (i.e. Adult, Family, etc.). Click the blue button in the top right. On the login page, click "Don't have a login? Signup" and enter all required fields. A temporary password will be emailed to you. You must be an adult to create an account. After your account is set up, you can add children to your account.

2 GET YOUR TEMPORARY PASSWORD

Go to your email to retrieve your temporary password. (Check your junk folder, if needed!)

3 SET A NEW PASSWORD

Return to this page and login using your temporary password. You will now set up a new password.

4 LOGIN TO YOUR ACCOUNT

Using your new password, login to your new account. You can:

- Add family members
- Save your payment information
- Navigate and learn about your new account
- Register for classes

PASSWORDS MUST HAVE:

- At least 11 characters
- Upper & lower case letters
- A number
- A symbol



ADULT CLASSES

BEGINNING SEWING

We will go over the fundamentals of sewing for the new sewist and those who need a refresher. Bring your machine or use ours. Please have some experience using your/a machine (threading, types of stitches). You will have the confidence to choose a pattern, fabric, and notions. Have 3 yards of woven cotton or cotton flannel pre-washed for the first class. **Supply fee: \$15.**

Sa 6/8-6/15 11 a.m.-3 p.m.
Brigitte's \$130 (In-city)/\$169 Brigitte



BEGINNING WATERCOLOR PAINTING (LBCC #16313)

Experience the fun and magic of watercolor while learning traditional techniques. The course supports your watercolor journey whether you are brand new to the medium or have some prior experience. Basic skills will be introduced, practiced, and then incorporated into painting exercises. See supplies to bring to class:

linnbenton.edu.supplies

Tu 6/25-8/27 10-11:50 a.m.
RCC \$129 Armstrong



CALLIGRAPHY

Unleash your artistic expression with our Calligraphy Class. Explore the world of decorative lettering, flourishing, and innovative design. Develop your unique calligraphic style while experimenting with colors, textures, and layouts. This class is suitable for both beginners and those with some calligraphy experience, offering a chance to take your skills to the next level and infuse your work with creativity.

Tu 6/18-8/13 9-11:30 a.m.
RCC \$80 (In-city)/\$104 Tanaka

FUSED GLASS CLASSES

Dive into the mesmerizing realm of fused glass in our dynamic classes! Explore the fusion of color and form as you create beautiful glass artwork. Learn the fundamentals of glass fusing. Whether you're a beginner or an aspiring glass artist, this class provides hands-on experience to craft unique jewelry, decor, and more. Unleash your artistic flair with the endless possibilities of fused glass. No prior experience is needed – just bring your passion for creativity! Note: Because sharp objects are used, manual dexterity and the ability to follow directions in a group setting are required. **Supply Fee: \$20.**

FUSED GLASS WAVY ART SCENE

W 7/24 6:30-9:30 p.m.
RCC \$19 (In-city)/\$25 Scheele

FUSED GLASS FLOWER

Tu 7/30 6:30-9:30 p.m.
RCC \$19 (In-city)/\$25 Scheele

FUSED GLASS BUGS

W 8/14 6:30-9:30 p.m.
RCC \$19 (In-city)/\$25 Scheele

FUSED GLASS WINDCHIMES

Th 8/22 6:30-9:30 p.m.
RCC \$19 (In-city)/\$25 Scheele

FUSED GLASS BUTTERFLY

Th 9/5 6:30-9:30 p.m.
RCC \$19 (In-city)/\$25 Scheele

FUSED GLASS FALL OR HALLOWEEN GARDEN ART

Tu 9/24 6:30-9:30 p.m.
RCC \$19 (In-city)/\$25 Scheele



ADULT CLASSES

LEARN TO SEW WITH KNIT FABRICS

Learn to work with knit fabrics and take home a new garment. Fabric must be purchased and pre-washed before each class. Patterns will be provided. Bring a snack. Students must know the basic functions of a sewing machine. **Supply fee: \$15.**

Sa 7/13 10 a.m.-2:30 p.m.
Brigitte's \$70 (In-city)/\$91 Brigitte

Sa 8/17 10 a.m.-3 p.m.
Brigitte's \$70 (In-city)/\$91 Brigitte



STAINED GLASS SUNCATCHER

Unlock your creativity with our Stained Glass Suncatcher class! Discover the timeless art of stained glass as you learn to design and craft your radiant suncatcher. Our experienced instructor will guide you through the step-by-step process of selecting vibrant glass pieces, cutting, and assembling them, and soldering them to create a stunning masterpiece that will illuminate any space with a kaleidoscope of colors. Whether you're a beginner or an experienced crafter, join us for a hands-on experience that combines artistic expression with the joy of capturing the beauty of sunlight through your unique stained glass creation.

W 7/17 5:30-8:30 p.m.
RCC \$90 (In-city)/\$117 Alma

Th 7/18 10:00 a.m.-1:00 p.m.
RCC \$90 (In-city)/\$117 Alma

MOSAIC CLASSES

Discover the vibrant world of mosaic art in our hands-on class! Unleash your creativity as you learn the art of arranging colorful glass, tiles, and other materials to craft stunning mosaic pieces. From basic techniques to intricate designs, this class welcomes beginners and enthusiasts alike. Join us for a fun and inspiring journey into the world of mosaic artistry – where every piece tells a unique story. No prior experience is required; just bring your imagination and enthusiasm! Note: Because sharp objects are used, manual dexterity and ability to follow directions in a group setting are required. **Supply fee: \$20.**

MOSAIC BEE/BUG HOUSE

Tu, Th 6/25, 6/27 6:30-9:30 p.m.
RCC \$19 (In-city)/\$25 Scheele

MOSAIC GARDEN ROCKS

M, W 8/5, 8/7 6:30-9:30 p.m.
RCC \$19 (In-city)/\$25 Scheele

MOSAIC GARDEN TOTEM

M, W 9/9, 9/11 6:30-9:30 p.m.
RCC \$19 (In-city)/\$25 Scheele

MOSAIC CANDLESTICK

M, W 9/30, 10/2 6:30-9:30 p.m.
RCC \$19 (In-city)/\$25 Scheele



ADULT CLASSES

HEALTHY, ACTIVE, AND FIT

Finding a fitness routine that works for you isn't always easy, but Albany Parks & Recreation has gone the extra mile to ensure you have plenty of possibilities. We have fitness classes to suit every ability level and personal preference, so come join us in a supportive and social environment as we seek to keep Albany fit!

ADULT BEGINNER TENNIS

Learn basic skills and the rules of the game. Watch yourself improve and gain confidence through fun games and drills. Racquets and balls provided.

Supplies: non-marking tennis shoes.

Session 1

Sa	6/15-7/6	3-4 p.m.
ATC	\$72 (In-city)/\$94	Jaworski

Session 2

Sa	7/13-8/3	3-4 p.m.
ATC	\$72 (In-city)/\$94	Jaworski

Session 3

Sa	8/10-8/31	3-4 p.m.
ATC	\$72 (In-city)/\$94	Jaworski

ADULT CARDIO TENNIS (AGES 18+)

Cardio Tennis is a high-energy group fitness class that combines traditional tennis drills with cardiovascular exercise. Participants engage in dynamic drills, constant movement, and music to elevate their heart rate and improve overall fitness. It's a fun and social way to stay active, improve tennis skills, and boost cardiovascular endurance. Advanced Beginner/Intermediate – participants should know basics tennis strokes and be comfortable moving around the court. Cardio Tennis offers a dynamic and energetic approach to staying fit while enjoying the sport of tennis. Supplies: non-marking tennis shoes.

Session 1

Sa	6/15-7/6	11 a.m.-noon
ATC	\$72 (In-city)/\$94	Jaworski

Session 2

Sa	7/13-8/3	11 a.m.-noon
ATC	\$72 (In-city)/\$94	Jaworski

Session 3

Sa	8/10-8/31	11 a.m.-noon
ATC	\$72 (In-city)/\$94	Jaworski

ADULT INTRO TO PICKLEBALL

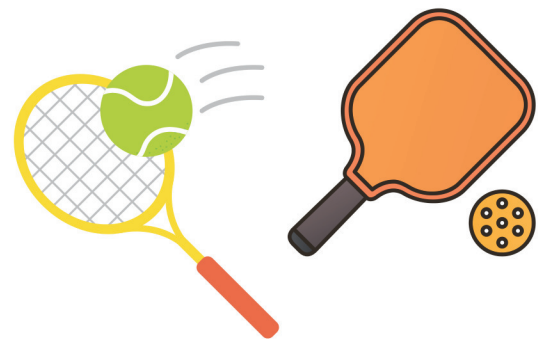
Some describe it as a cross between ping pong and tennis. It is one of the fastest growing sports in the country. Learn basic rules of the game, strokes, and scoring. Get out on the court and see what this popular game is all about! Racquets and balls provided. Supplies: non-marking tennis shoes.

Session 1

Sa	7/13-8/3	9-10 a.m.
ATC	\$72 (In-city)/\$94	Jaworski

Session 2

Sa	8/10-8/31	9-10 a.m.
ATC	\$72 (In-city)/\$94	Jaworski



ADULT INTERMEDIATE PICKLEBALL

Improve your fundamentals while focusing on consistency, footwork, control and shot placement through games, drills, and friendly competition. Paddles and balls provided. Supplies: non-marking tennis shoes.

Session 1

Sa	6/15-7/6	10-11 a.m.
ATC	\$72 (In-city)/\$94	Jaworski

Session 2

Sa	7/13-8/3	10-11 a.m.
ATC	\$72 (In-city)/\$94	Jaworski

Session 3

Sa	8/10-8/31	10-11 a.m.
ATC	\$72 (In-city)/\$94	Jaworski

ADULT CLASSES

ARTHRITIS FOUNDATION EXERCISE PROGRAM

This program offers gentle, joint-safe exercises developed specifically for people with arthritis to help relieve stiffness, decrease arthritis pain, and improve balance. The low-impact exercises can be done while sitting, standing, or on the floor.

M, W 6/24-8/28 1:30-2:20 p.m.
RCC \$96 (In-city)/\$125 Yee

BETTER BONES & BALANCE

Based on OSU Bone Research Lab studies, this exercise program has been shown to slow the rate of bone loss in adults of all ages. Improve your balance and coordination, reduce your risk for falls, and see an increase in muscle tone and overall body fitness.

LBCC #16374

Tu, Th 6/25-8/29 8-8:50 a.m.
Swanson \$119 Reed

LBCC #16320

Tu, Th 6/25-8/29 12-12:50 p.m.
Swanson \$119 Yee



GENTLE YOGA

Increase strength, flexibility, and reduce stress while learning techniques to calm your mind and soothe your spirit. Learn yoga poses that develop strength, balance, proper breathing, and relaxation. **Bring a yoga mat and blanket.**

LBCC #16324

***No Class 8/23**

M, W, F 6/24-8/28* 1-1:50 p.m.
RCC \$139 Rose

LBCC #16323

M, W, F 6/24-8/28* 2-2:50 p.m.
RCC \$139 Rose

TAI CHI (LBCC #16318)

Tai Chi is a form of movement, meditation, and martial art that originated in China. Promotes relaxation, relief from stress, and improved general well-being by practicing mind/body harmony and cultivating internal energy or “chi”.

M 6/24-8/26 10:30-11:50 a.m.
RCC \$89 Leban



ZUMBA GOLD (LBCC #16319)

A dynamic, exciting, and effective fitness program perfect for active older adults who are looking for a modified Zumba® class that recreates the original moves you love at a lower intensity. It is designed to introduce easy-to-follow Zumba® choreography that focuses on balance, range of motion, and coordination.

Tu, Th 6/25-8/29 9-9:50 a.m.
Swanson \$119 Reed



ZUMBA/ZUMBA TONING

Zumba/Zumba Toning provides a total body workout using easy-to-follow choreographed dance moves to combine all elements of fitness – cardio, muscle conditioning, balance, and flexibility. Zumba Fitness classes are often called exercise in disguise because they are super effective and amazingly fun.

***No Class 9/2**

Session 1

M, W, F 8/12-9/16* 8:30-9:30 a.m.
Swanson \$59 (In-city)/\$77 Reed

Presented by:  **Central Willamette**
CREDIT UNION

August 23, 24, 25*, 2024

TIMBER LINN PARK • 900 PRICE RD SE, ALBANY, OR

* HOT AIR BALLOON LAUNCH ONLY



BALLOON LAUNCH

ARTS & CRAFT MARKET

FAMILY ZONE

CAR SHOW

DELICIOUS FOOD

BALLOON GLOW

LIVE MUSIC & MORE

Fun for the whole family!

Titanium Sponsors:



Platinum Sponsors:



PERFORMING LIVE ON SATURDAY NIGHT



Follow us for updates!

Check website for event schedule and details
nwartandair.org

Parking \$10 •

@northwestartandairfestival

@albanyparksandrec



TRIPS & TOURS

At Albany Parks & Recreation, we believe in creating inclusive experiences that are accessible to all. As such, we strive to provide detailed information about each trip and tour, including any potential obstacles such as stairs, uneven surfaces, or challenges that might be encountered during the excursion.

While some of our trips may involve navigating stairs or traversing uneven terrain, we want to emphasize that everyone is welcome to sign up for a trip if they believe it aligns with their interests and abilities.

We offer performances and make every effort to secure seats at venues with minimal stairs and try to secure some seats that sit on the aisle. However, we also want to ensure that everyone is prepared for any potential challenges they may encounter. Therefore, we kindly ask all participants to be mindful and prepared to navigate some stairs during our performances.

If you have a specific accessibility concern or requirement, please don't hesitate to reach out to us.

Thank you for considering our trip and tour program. We look forward to embarking on exciting adventures together!

HOW TO REGISTER FOR TRIPS & TOURS:

For complete registration, cancellation, and refund information visit our website at www.albanyparksandrecreation.org. You can register beginning **May 24 at 8:30 a.m.** at the Riverfront Community Center (489 NW Water Ave/541-917-7760) or online at www.albanyparksandrecreation.org.

Payment is due at the time of registration. Tours are open to any person over the age of 18 unless noted otherwise.

Departures: All trips will depart from Carino's Restaurant: Located at 1825 14th Ave SE. Please arrive 15 minutes prior to the listed time of departure. All participants must be on the bus at the listed time for departure. We are unable to delay departure for those not present. If you are not there at departure time, we are unable to refund you for your trip. Participants are required to park in spaces on the south side of the parking lot (the spaces that back up to the mall entrance road off the Geary Street entrance).

Cancellations: If a participant decides to cancel, a refund will only be given if another participant is found. If a replacement is found, you will be refunded using the method used for payment.

TEN FALLS CANYON TRAIL- HIKE (SILVERTON)

Hike through a beautiful canyon in Oregon's largest state park past ten waterfalls ranging in height from 27 feet to 178 feet; 4 of them you can even walk behind! There are plenty of benches for rest and the trail is extremely well maintained. Please bring a daypack and water. We will provide a sack lunch that includes a sandwich (please choose from Ham, Turkey, or Veggie), chips, and a cookie. Fee includes transportation only. **This trip is limited to the first 14 participants to register.**

Deadline to register: June 6. Difficulty: Easy; Length: 6 miles.

Departs: Carino's at 9 a.m.

Th, 6/13 | 9 a.m.-3:30 p.m. | \$10 (In-City)/\$15



TRIPS & TOURS

CANNON BEACH

Celebrate the day at the coast! Welcome to a place where the stunning beauty of nature mingles with priceless world-class galleries and boutiques. This picturesque Oregon community proudly upholds a long-standing reputation as "one of the 100 best art towns in America". Visit and shop in the art galleries, souvenir shops, restaurants, and candy stores along Main Street. This trip involves a lot of walking. **Deadline to register: June 10.** Fee includes transportation only. All meals will be on your own. **Departs: Carino's at 8 a.m.**

Tu, 6/18 | 8 a.m.-6:30 p.m. | \$41 (In-City)/\$55



WOLF CREEK INN & TAVERN (SOUTHERN OREGON)

The Wolf Creek Inn was built along the Applegate Trail in 1883. It is the oldest continuously operating inn in the Pacific Northwest. The tavern and the inn are still in operation and that's where we are headed for a guided tour and lunch. We will also make a brief stop in Golden, Oregon which is an old ghost town. **Deadline to register: June 10.** **This trip is limited to the first 25 people to register.** Please choose one of the following for your main entrée: Meatloaf, Fried Chicken Breast, Fish and Chips, or Pasta of the week. (Lunch will include 2 sides) Fee includes lunch, gratuity, tour, and transportation.

Departs: Carino's at 8:15 a.m.

Th, 6/20 | 8:15 a.m.-6 p.m. | \$65 (In-City)/\$86



SALTY'S WATERFRONT SEAFOOD GRILL (PORTLAND)

The best seafood and steak restaurant in Portland is on the Columbia River. Salty's Seafood Grill is truly in a class by itself. Anchored right on the river with sweeping views of the mighty Columbia and majestic Mt. Hood in the background, every seat at Salty's offers a great view. Fee includes transportation only. Lunch will be on your own. Please be prepared to climb stairs for this dining experience. **This trip is limited to the first 14 people to register. Deadline to register July 1.** We will make a stop at Ikea before heading home. **Departs: Carino's at 9:30 a.m.**

Tu, 7/9 | 9:30 a.m.-5:30 p.m. | \$37 (In-City)/\$49



SISTERS QUILT SHOW (SISTERS)

Join us for the most vibrant day of the year in Sisters, Oregon. Over 1300 quilts from around the world will cover this 1880's-style town in rich texture and color. Quilts hang from buildings, fences, porches, and windows in this delightful western town! For the past 35 years, quilters have gathered in Sisters to experience one of the most colorful displays of the quilters' art to be found in the United States. Sisters' downtown is wrapped in quilts just waiting for you to enjoy! This trip involves a lot of walking so put on your comfortable shoes. **Deadline to register: July 2.** **Fee includes transportation only.** All meals will be on your own.

Departs: Carino's at 8:30 a.m.

Sa, 7/13 | 8:30 a.m.-6:30 p.m. | \$39 (In-City)/\$52

TRIPS & TOURS

WHITE WOLF SANCTUARY (TIDEWATER)

White Wolf Sanctuary is located in a coastal mountain range of Oregon near the small town of Tidewater and covers 60 acres, 50 acres of which are completely fenced and isolated for the protection of the Arctic wolves. The white wolves run as freely as possible in a natural habitat which includes ponds, shelters, trees, and meadows. The White Wolf Sanctuary houses and cares for Arctic wolves. Most of these wolves were rescued from abusive or unwanted situations. Your directed tour around the sanctuary will provide you with the opportunity to see and hear about the wolves. We'll dine on the way to the sanctuary. Please wear long pants and closed-toed shoes and avoid wearing heavy perfume or cologne. No photography will be allowed. This trip involves a lot of walking on uneven ground. **Deadline to register: June 28.** Fee includes transportation and admission to the sanctuary. All meals will be on your own.

Departs: Carino's at 10:30 a.m.

Th, 7/18 | 10:30 a.m.-6 p.m. | \$118 (In-City)/\$156

MULTNOMAH FALLS SUNDAY BRUNCH (CORBETT)

Enjoy an abundant Sunday Brunch with impressive views of an Oregon iconic landmark. Plummeting 620 feet, Multnomah Falls looms above the historic lodge which was built in 1925. Fine Northwest cuisine is only enhanced by the breathtaking sight from each table. There will be time to walk outdoors and visit the gift shop. **Trip limited to the first 20 people to register. Deadline to register: July 2.** Fee includes transportation and Sunday brunch meal.

Departs: Carino's at 7:45 a.m.

Su, 7/21 | 7:45 a.m.-4:30 p.m. | \$77 (In-City)/\$102

ARAGON ALPACAS (EUGENE)

Join us in experiencing the tranquility of Alpacas! They are quiet, gentle, and curious animals, slightly smaller than their cousin, the llama. These herd animals graze on pasture grass or hay. Explore their fleece in various hues at the Farm store, featuring locally crafted items. We will stop for lunch after the farm visit. This trip involves walking on uneven ground. **If it is raining, this trip will be rescheduled. This trip is limited to the first 19 to register. Deadline to register: July 15.** Fee includes transportation only. All meals will be on your own.

Departs: Carino's at 9:30 a.m.

Tu, 7/23 | 9:30 a.m.-3 p.m. | \$35 (In-City)/\$46



HOOD RIVER COUNTY FRUIT LOOP

We'll take a scenic drive through the valley's orchards, forests, and farmlands where we will discover all it has to offer. The area is known for handcrafted treasures, fruits, wines, country stores, and garden art. If we were to hit every business on the entire circuit, it would take at least a day if not two, so we are going to try to hit as many as we can. **This trip is limited to the first 14 people to register. Deadline to register: July 17.** Fee includes transportation only. All meals will be on your own.

Departs: Carino's at 7:45 a.m.

W, 7/24 | 7:45 a.m.-6 p.m. | \$43 (In-City)/\$57

TRIPS & TOURS

OREGON COAST SCENIC RAILROAD (GARIBALDI)

The rhythmic rocking of the car, the soothing clickety-clack of the rails... the Port of Tillamook Bay Railroad offers you the nostalgia of days gone by, traversing some of the most scenic countryside on the Oregon Coast. The Oregon Coast Explorer offers many views and vistas that you can't access from Highway 101. We will start our trip in Garibaldi and travel to Rockaway Beach where you will have time to stop and browse antique stores and have lunch. Then we will board the train again and travel back to Garibaldi before heading home. **Deadline to register: July 8.** Please be prepared to climb stairs to get on the train. Fee includes coastal excursion train ride and transportation only. All meals will be on your own. **Departs: Carino's at 7:30 a.m.**

W, 7/31 | 7:30 a.m.-7:30 p.m. | \$68 (In-City)/\$90

BEAUTIFUL- CAROLE KING MUSICAL (TIGARD)

Beautiful is the inspiring true story of legendary musician Carole King and her journey from teenage songwriter to the Rock & Roll Hall of Fame. This extraordinary saga features such unforgettable classics as "You've Got A Friend," "One Fine Day," "So Far Away," "Take Good Care Of My Baby," "Up On The Roof," "Will You Love Me Tomorrow," and "Natural Woman." Don't miss this musical phenomenon filled with the songs you remember and a story you'll never forget. **Limited to the first 24 people to register. We cannot guarantee easy access or ADA seating. Deadline to register: June 17.** Fee includes ticket to performance and transportation only. We will stop for lunch before the performance. All meals will be on your own.

Departs: Carino's at 9:50 a.m.

Su, 8/4 | 9:50 a.m.-6:30 p.m. | \$81 (In-City)/\$107

FLORENCE DOWNTOWN & CASINO

Whether you are shopping or gambling, this trip is for you! Once we are in Florence you can visit Three Rivers Casino and take a chance on Lady Luck. Watch the slots shake and dance! If gambling isn't your thing, then you can enjoy a scenic walk through historic old town Florence with its unique shops and eateries...From lace and glassware to tea rooms and teddy bears, Florence will have something for you to enjoy. **You must be 21 years old to register for this trip. Deadline to register: July 26.** Fee includes transportation only. All meals will be on your own.

Departs: Carino's at 8:30 a.m.

W, 8/7 | 8:30 a.m.-6 p.m. | \$40 (In-City)/\$52



SCANDINAVIAN FESTIVAL (JUNCTION CITY)

Junction City turns its downtown area into a charming old-world town for the Scandinavian Festival. Come join us and enjoy cultural entertainment, food, and activities in the authentic Scandinavian spirit. This event pays homage to the cultures of Denmark, Finland, Norway, Sweden, and Iceland. Find treasured handicrafts including rosemaling, hardanger, pottery, woodcrafts, needlework, original paintings, drawings, and watercolors. Perhaps best of all, enjoy the incredible abelskiver and Swedish meat pies (the list goes on and on!). **Deadline to register: July 30.** Fee includes transportation only. All meals will be on your own.

Departs: Carino's at 10 a.m.

F, 8/9 | 10 a.m.-4 p.m. | \$28 (In-City)/\$36

TRIPS & TOURS

JERSEY BOYS (LAKEWOOD THEATER/LAKE OSWEGO)

They had the look, an attitude, and a sound like no other. Sure, they were born in Jersey. But they were made in America. *Jersey Boys* is the international musical phenomenon that takes you behind the scenes and behind the music of Frankie Valli and The Four Seasons. **Deadline to register: July 10. This trip is limited to the first 19 to register.** We cannot guarantee easy access or ADA seating. We will stop for lunch before the performance. Fee includes ticket to performance and transportation. All meals will be on your own. **Departs: Carino's at 10:15 a.m.**

Su, 8/11 | 10:15 a.m.-6 p.m. | \$71 (In-City)/\$94



FLOWERS AND SHORTCAKE (CANBY)

Today, we will stop for an early lunch before we make our way to the Swan Island Dahlia Festival, a must see for all dahlia lovers! Stroll through and view almost 50 acres and a beautiful display garden of stunning dahlias featuring over 370 varieties. Purchase a beautiful bunch of cut dahlias to take home with you or to make someone's day. Visit the gift shop with hundreds of local treasures. We will also make a stop at EZ Orchards where you can fill your belly with yummy shortcake before heading home! **Trip limited to the first 19 people to register. Deadline to register: August 6.** This trip involves walking on uneven ground. Fee includes transportation only. All meals and shortcake are on your own. **Departs: Carino's at 10:15 a.m.**

Th, 8/15 | 10:15 a.m.-5:45 p.m. | \$33 (In-City)/\$44

LUNCH CRUISE ON THE PORTLAND SPIRIT (PORTLAND)

Portland Spirit, the Northwest's premier dining ship, has a delightful lunch menu. Join us for fresh Northwest cuisine prepared in the onboard galley. Beautiful views of Portland's downtown skyline will make this an extra special treat. Fee includes luncheon, cruise, and transportation. Please bring your ID with you for this trip. You will need to be able to climb stairs to register for this trip.

Deadline to register: August 2. Trip limited to the first 14 people to register.

Departs: Carino's at 8:45 a.m.

W, 8/21 | 8:45 a.m.-4 p.m. | \$98 (In-City)/\$130

OREGON STATE FAIR (SALEM)

Jars filled with pickled beets lined in rows, bleating lambs, clucking Rhode Island Reds, Aunt Ethel's heirloom quilt, and daintily crocheted handiwork...Don't miss this terrific chance to pet the animals, admire the handiwork, enjoy the many entertainers, and marvel at the size of the prize-winning produce. **Deadline to register: August 14.** Fee includes admission to the fair and transportation. All meals will be on your own.

Departs: Carino's at 10:15 a.m.

W, 8/28 | 10:15 a.m.-4:15 p.m. | \$33 (In-City)/\$44



TRIPS & TOURS

MT. ANGEL OKTOBERFEST (MT. ANGEL)

There is no more appropriate setting for an “Old World” Oktoberfest than Mt. Angel. This small community was settled by German pioneers in the 1800s. There will be over 60 Alpine food chalets along with arts and crafts and some fabulous music. Dancers and musicians provide almost continuous amusement and add a special flavor to the festivities. You won’t want to miss the Big Bands playing their “oompah” music, the yodeling, and folk dancing. **Deadline to register: September 4.** Fee includes transportation only. All meals will be on your own.

Departs: Carino’s at 10 a.m.

Th, 9/12 | 10 a.m.-5 p.m. | \$33 (In-City)/\$44



EXPLORE THE SEATTLE AREA

Seattle is one of the most beautiful cities in the world and you’ll enjoy it all on this trip that features planes, glass, and automobiles. This three-day adventure will feature three world-class museums as well as a visit to the world-famous Pike Place Market.

We’ll visit LeMay’s, America’s car museum, which spotlights America’s love affair with the automobile. This 9-acre museum houses four stories of cars and is one of the world’s largest auto museums. Cars are great, but what about planes? The Museum of Flight is one of the largest air and space museums in the world. The museum’s collection includes more than 150 historically significant air and spacecraft, as well as the Red Barn®—the original manufacturing facility of the Boeing Co. From flight simulators to the original Air Force One, you’ll be engaged in the

history of flight.

No trip to the Seattle area would be complete without a visit to the stunning Museum of Glass. Feel the heat as you watch a team of artists create masterpieces from molten glass in the world’s largest hot shop. Marvel at edgy and inspiring exhibits of glass including the remarkable Chihuly Bridge of Glass.

Enjoy the sights of the city when you get away on this remarkable tour. **This trip will involve a lot of walking.** Fee includes admission to LeMay Museum, Museum of Glass, Museum of Flight, and 2 nights lodging (hotel breakfast is included for Thursday/Friday). All meals and purchases will be on your own. **Deadline to register: August 1.**

Departs: Carino’s at 7 a.m.

W, 9/18-F, 9/20 | 7 a.m.-7 p.m.

Single Occupancy \$544/Double Occupancy \$347 (In-City)

Single Occupancy \$659/Double Occupancy \$462 (Out of City)



ALWAYS-PATSY CLINE (TIGARD)

Always...Patsy Cline returns by popular demand. This heartfelt revue tells the true story of the country music legend’s unlikely friendship with a fan, Louise Seger, cemented by years of letter writing. Featuring a wealth of Cline’s beloved hits such as “Walkin’ After Midnight,” “I Fall to Pieces,” “Crazy,” and “Sweet Dreams,” based on a true story. **Limited to the first 24 people to register.**

We cannot guarantee easy access or ADA seating. **Deadline to register: August 1.** Fee includes ticket to performance and transportation only. We will stop for lunch before the performance. All meals will be on your own.

Departs: Carino’s at 9:30 a.m.

Su, 10/6 | 9:30 a.m.-6 p.m. | \$84 (In-City)/\$111

Senior & Adult Aquatic Classes



Activities	Days	Time	Cost	Location
Senior Fitness	M, Tu, Th, F	7-7:50 a.m. 8-8:50 a.m.	\$6.25/\$7.75 per class	Albany Community Pool
Adult Aqua Jog	M, W	6-7 p.m.	\$6.75/\$8.25 per class	
	Tu, Th	Noon-1 p.m.		
Adult Water Aerobics	Tu, Th	8-9 p.m.		
Lap Swim	M-F	5:30-8:30 a.m. Noon-2 p.m. 6-7 p.m. (M, W, F)	Senior: \$5.25/\$6.75 per session Adult: \$5.75/\$7.25	
	Sa	Noon-1 p.m.		

Monthly passes include access to fitness classes, lap swims, and recreation swims.
Passes will auto renew until pass holder calls to cancel.

Senior (55+) Monthly Pass
\$28 (In-city)/\$37



Adult Monthly Pass
\$33 (In-city)/\$44



VOLUNTEER

Be a part of the fun!

Get Involved, Make a Difference



**Visit albanyoregon.gov/volunteer
or call 541-917-7774**

40
1984-2024
YEARS

RIVER RHYTHMS

2024 CONCERT SERIES

Thursdays at 7 pm
IN ALBANY'S MONTEITH RIVERPARK

\$1
per person
donation
encouraged

July 4



Lee Greenwood
with fireworks following!

July 11



Super Diamond

July 25



Tower of Power

August 1



Thompson Square

August 8



Girl Named Tom

Rock Out
Against Hunger!

Follow us for updates:



@riverhythms
@albanyparksandrec
riverhythms.org

IN PARTNERSHIP WITH
OREGON Freeze Dry
See website for details.

PREMIER SPONSORS

- arauco
- EC electric
- GILGAMESH
- NW Natural
- TOYOTA
- C ENERGY

MAJOR SPONSORS

- Albany Democrat-Herald
- KEZI 9 abc NEWS
- KGAL SmartTalk 1580
- honey mint
- IBEW 280
- ALBANY NEWS
- ALBANY NEWS
- owp

July 8

2024

July 22

Follow us for updates!
albanysummersounds.org

@albanysummersounds
@albanyparksandrec

BREWERS GRADE COUNTRY

MONDAYS AT 7PM
MONTEITH RIVERPARK

THE STEELE FAMILY BAND

TYLERS STENSON AND THE BLACK-WINGED BIRDS

MICHELLE LAMBERT

\$1 per person
donation
encouraged



Summer Sounds

ALBANY Democrat-Herald

EC electric

MENNONITE VILLAGE

KEZI 9 abc NEWS

Tires LES SCHWAB

IBEW 280

ALBANY RV

APEX PROPERTY CLEANING & RECYCLING

arauco

CASA

Comfort SUITES

Edward Jones INVESTMENTS

red canoe CREDIT UNION

TOYOTA

KGAL SmartTalk 1580

KSHO The Best Place

106.3 KLOO

KORNT

Oregon State Credit Union

red canoe CREDIT UNION

TOYOTA

Xtreme Graphics



I SPY A WILDFLOWER!



Spring has arrived & it's a perfect time to set out on an adventure outdoors! Let's see how many Oregon Wildflowers you can spy!



Here are three of our favorite spots to search for wildflowers:



Common Camas



Trillium



Rosey Pleuritis



Viola Glabella



Smith's Fairybell



Oregon Iris



William L. Finley Nat'l Wildlife Refuge in Corvallis
26208 Finley Refuge Road
Corvallis, OR 97333



Meadowedge Trail #1325 at Mary's Peak



Talking Water Gardens
577 Waverly Dr NE,
Albany, OR 97321

Home Instead wants to remind you to adventure safely. Don't forget:

- 1) A backpack with sunscreen, water & snacks
- 2) Your cell phone, sun hat and walking stick
- 3) Invite a buddy! Never hike alone
- 4) Plan for emergencies. Let someone know where you'll be and what time you expect to return

**Your
name
at Monteith
Park!**



Grow with us! With your **donation to Albany Parks & Recreation Foundation**, you can add your name to a vibrant donor wall, to be installed in front of the new playground coming to Monteith Park this summer.

- 🌸 Honor an individual, group or organization with their name on a flower petal or center.
- 🌸 Various sizes of petals and centers available, starting at \$150.
- 🌸 Your tax-deductible donation supports Albany Parks & Recreation scholarships, facilities, concerts, classes and more.

Donate now at **AlbanyParks.org** or **scan the QR code** to reserve yours.
Only a limited number of spaces are available.

Albany Parks & Recreation Foundation is a private non-profit corporation registered in the State of Oregon and operates as a tax-exempt 501(c)(3) organization.
The above graphic is for illustrative purposes only; the final installation may vary.



Scan the code or visit
AlbanyParks.org to donate.



INVITE THE GREAT OUTDOORS TO YOUR NEXT EVENT

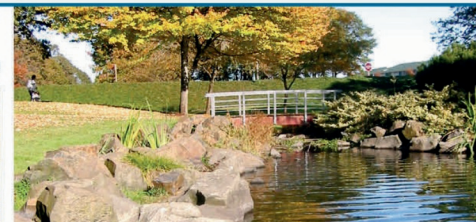


Community parks provide unique and affordable rental spaces for your next party.

PARK RENTALS NOW AVAILABLE

Amenities available include: Electricity, BBQ grills, disc golf course, basketball courts, horseshoe pits, playgrounds, and more! Affordable Pricing.

— **More details about renting a park are available at albanyparksandrecreation.org** —



Call 541-917-7777 to reserve a park for your next event!



riverfront

COMMUNITY CENTER

ENRICHING LIVES - CREATING COMMUNITY

The Riverfront Community Center is a safe and welcoming environment that promotes community participation through intergenerational activities and culturally diverse programs that enrich the lives and values of citizens and visitors to Albany.

At 10,000 square feet, the Riverfront Community Center features many amenities, including:

- 4,000 square-feet of rental event space
- Coffee Shop and gathering areas
- Beautiful outdoor space along the riverfront
- Private classrooms, meeting rooms, & more

VISITORS WELCOME:

Monday-Friday:

8:30 a.m – 4:30 p.m.

489 Water Ave NW

Albany, OR 97321

(541) 917-7760

For Rental Information visit:

cityofalbany.net/parks/community-center



SPRING WORD SCRAMBLE ANSWERS

How many did you guess correctly?



1.	OMBOL	BLOOM
2.	LNLEPO	POLLEN
3.	SRTPUO	SPROUT
4.	WSOLRFE	FLOWERS
5.	EARDGN	GARDEN
6.	YSALGBDU	LADYBUGS
7.	OSEADWM	MEADOWS
8.	SORES	ROSES
9.	EMTPNGRISI	SPRINGTIME
10.	SUTPLI	TULIPS

11.	RRSTAELPIALC	CATERPILLARS
12.	ASGSR	GRASS
13.	NGLPNTAI	PLANTING
14.	OBWNIAR	RAINBOW
15.	SHESORW	SHOWERS
16.	PEUDDL	PUDDLES
17.	BSIDR	BIRDS
18.	SFEUETTBLIR	BUTTERFLIES
19.	SEUSNHNI	SUNSHINE
20.	PNSSGAIL	SAPLINGS





SIMPLY PUZZLING

Unscramble the words in this spring inspired scramble!

Turn in your completed form by July 31 to the Riverfront Community Center to be entered into this season's drawing for fun prizes!



1.	UHNISNES	
2.	CAEBH	
3.	ALTVRE	
4.	SLUSNGSSEA	
5.	LEPXREO	
6.	EOFSRRWIK	
7.	RNEESNUCS	
8.	SLOICPSPE	
9.	DMNOELAE	
10.	LMETGIN	

11.	LEWOLY TJKACE	
12.	CPNICI	
13.	ORATEECRNI	
14.	NSADSAL	
15.	ANAVOTCI	
16.	MERAENWLTO	
17.	UHCIZNIC	
18.	UEFDRILAG	
19.	AIAYGNKK	
20.	CMAKMHO	

RIVERFRONT COMMUNITY CENTER CLOSED:

June 19 • July 4 • July 11 • July 25

August 1 • August 8 • August 23

SUMMER