

AN ORDINANCE TO LEVY A CHARGE UNDER THE PROVISIONS OF CHAPTER 10.16 OF THE ALBANY MUNICIPAL CODE FOR AN IN-LIEU-OF ASSESSMENT FOR INTERCEPTOR SEWER FOR SAID PROPERTY BEING DESCRIBED AS TAX LOT 1600, OF PARCEL 10S-04W-25, AND DECLARING AN EMERGENCY.

THEREFORE, THE PEOPLE OF THE CITY OF ALBANY DO ORDAIN AS FOLLOWS:

Section 1: A charge is hereby levied against the following described property:

Albuli LLC	Acct #'s: naila000-0298-000 & naila000-0299-000
11902 SE Stark St	Total: \$151,707.65
Portland, OR 97216	Map:10S-04W-25 -01600 (See attached Exhibit "A")
Tax Acct#: 0374962	Description: 45.92 Acres to be platted as North Creek Subdivision

Charge is for the purpose of receiving benefit from the existing sewer in the North Albany Sanitary Sewer Basin as required under Chapter 10.16 of the Albany Municipal Code (AMC).

Section 2: The total cost for service from the sanitary sewer line serving the property described in Section 1 is as follows:

45.92 acres x \$2,442 (Interceptor Rate) = \$112,136.64
 5.03 Benefits x \$7,867 (Collector Rate) = \$39,571.01

Note: This is an In-Lieu-Of Assessment (ILA) charge for sewer connections of unassessed properties outside the original North Albany sanitary sewer interceptor basin as defined in the North Albany Sewer Local Improvement District Final Engineer's Report dated April 13, 1993. These In-Lieu-Of Assessments are designed to recover the equivalent cost of constructing that portion of the sewer system that benefits the connecting property. Resolution 5436, dated May 23, 2007, lists the most recent adjustments for the In-Lieu-Of Interceptor and Collector assessment rates.

Section 3: The City Recorder is hereby directed to enter a statement of the assessments as above provided in the docket of the City liens and give notice thereof as provided by law.

Section 4: Inasmuch as this ordinance is necessary for the immediate preservation of the peace, health, and safety of the citizens of the City of Albany, an emergency is hereby declared to exist, and this ordinance shall be in full force and effect immediately upon its passage by the Council and approval by the Mayor.

Passed by the Council: August 12, 2009

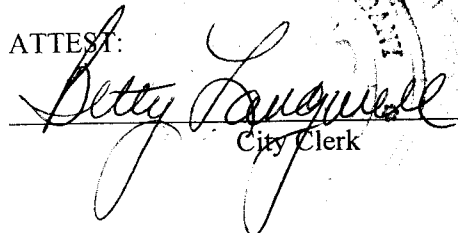
Approved by the Mayor: August 12, 2009

Effective Date: August 12, 2009



 Mayor

ATTEST:



 City Clerk

Owner of Record

Property Description

Assessment Description

Albuli LLC
11902 SE Stark St
Portland, OR 97216

Acreage
North Creek Subdivision
10S 04W 25 01600

Sewer Interceptor
Amount: \$112,136.64
Account #: naila000-0298-000

Albuli LLC
11902 SE Stark St
Portland, OR 97216

Acreage
North Creek Subdivision
10S 04W 25 01600

Sewer Collector
Amount: \$39,571.01
Account #: naila000-0299-000

Report Total: **\$151,707.65**

Exhibit "A"
SECTION 25 T.10S. R.4W. W.M.
BENTON COUNTY

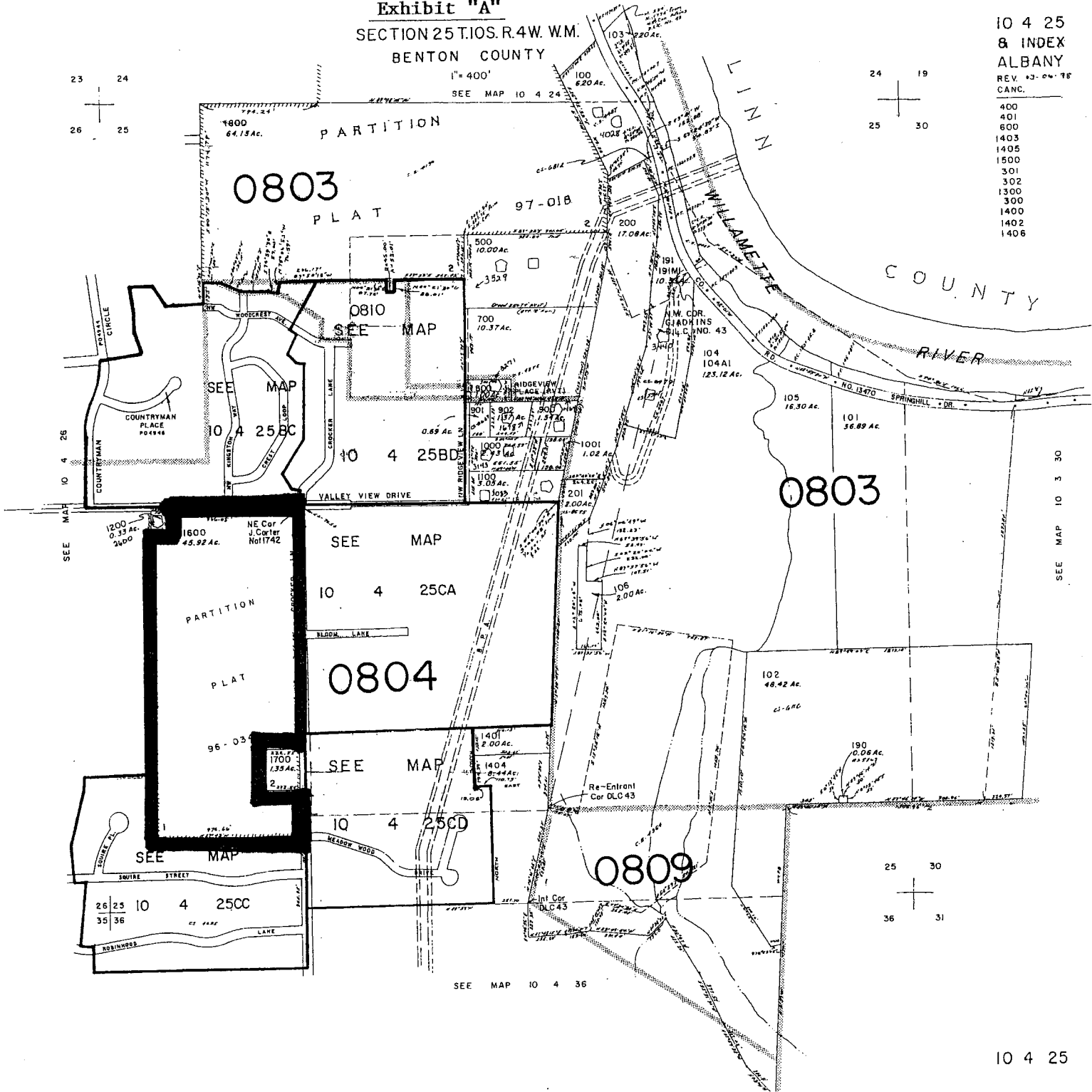
1" = 400'

SEE MAP 10 4 24

10 4 25
 & INDEX
 ALBANY
 REV. 03-04-18
 CANC.



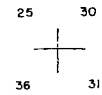
400
 401
 600
 1403
 1405
 1500
 301
 302
 1300
 300
 1400
 1402
 1406



SEE MAP 10 4 26

SEE MAP 10 3 30

26 25 10 4 25CC
 35 36



SEE MAP 10 4 36

ORDINANCE NO. _____

AN ORDINANCE TO LEVY A CHARGE UNDER THE PROVISIONS OF CHAPTER 10.16 OF THE ALBANY MUNICIPAL CODE FOR AN IN-LIEU-OF ASSESSMENT FOR INTERCEPTOR SEWER FOR SAID PROPERTY BEING DESCRIBED AS TAX LOT 1600, OF PARCEL 10S-04W-25, AND DECLARING AN EMERGENCY.

THEREFORE, THE PEOPLE OF THE CITY OF ALBANY DO ORDAIN AS FOLLOWS:

Section 1: A charge is hereby levied against the following described property:

Albuli LLC	Acct #'s: naila000-0298-000 & naila000-0299-000
11902 SE Stark St	Total: \$168,464.36 \$151,707.65
Portland, OR 97216	Map:10S-04W-25 -01600 (See attached Exhibit "A")
Tax Acct#: 0374962	Description: 45.92 Acres to be platted as North Creek Subdivision

Charge is for the purpose of receiving benefit from the existing sewer in the North Albany Sanitary Sewer Basin as required under Chapter 10.16 of the Albany Municipal Code (AMC).

Section 2: The total cost for service from the sanitary sewer line serving the property described in Section 1 is as follows:

45.92 acres x \$2,442 (Interceptor Rate) = \$112,136.64
~~7.16 acres~~ 5.03 Benefits x \$7,867 (Collector Rate) = ~~\$56,327.72~~ \$39,571.01

Note: This is an In-Lieu-Of Assessment (ILA) charge for sewer connections of unassessed properties outside the original North Albany sanitary sewer interceptor basin as defined in the North Albany Sewer Local Improvement District Final Engineer's Report dated April 13, 1993. These In-Lieu-Of Assessments are designed to recover the equivalent cost of constructing that portion of the sewer system that benefits the connecting property. Resolution 5436, dated May 23, 2007, lists the most recent adjustments for the In-Lieu-Of Interceptor and Collector assessment rates.

Section 3: The City Recorder is hereby directed to enter a statement of the assessments as above provided in the docket of the City liens and give notice thereof as provided by law.

Section 4: Inasmuch as this ordinance is necessary for the immediate preservation of the peace, health, and safety of the citizens of the City of Albany, an emergency is hereby declared to exist, and this ordinance shall be in full force and effect immediately upon its passage by the Council and approval by the Mayor.

Passed by the Council: _____

Approved by the Mayor: _____

Effective Date: _____

Mayor

ATTEST:

City Clerk

<u>Owner of Record</u>	<u>Property Description</u>	<u>Assessment Description</u>
Albuli LLC 11902 SE Stark St Portland, OR 97216	Acreage North Creek Subdivision 10S 04W 25 01600	Sewer Interceptor Amount: \$112,136.64 Account #: naila000-0298-000
Albuli LLC 11902 SE Stark St Portland, OR 97216	Acreage North Creek Subdivision 10S04W 25 01600	Sewer Collector Amount: \$56,327.72 Amount: \$39,571.01 Account #: naila000-0299-000

Report Total: ~~\$168,464.36~~ \$151,707.65