

ORDINANCE NO. 5276

AN ORDINANCE TO LEVY AN ASSESSMENT AGAINST PROPERTY SPECIFICALLY BENEFITED BY A SEWER CONNECTION AND THE ASSESSMENT OF A SEWER SYSTEM DEVELOPMENT CHARGE AT: 1332 INDUSTRIAL WAY SW, ALBANY; AND DECLARING AN EMERGENCY.

THE PEOPLE OF THE CITY OF ALBANY DO ORDAIN AS FOLLOWS:

Section 1: The Sewer System Development Charge as referred to in this ordinance is to provide sewer connections to serve the structure on this property. The charge will be assessed on the property described as follows:

(see attached Assessment Listing/Exhibit A)

Section 2: The Sewer System Development Charge and the assessment for the same shall be levied according to the provisions of Albany Municipal Code, Chapter 15.16.

Section 3: The total cost of the Sewer System Development Charge is as follows:

(see attached Assessment Listing/Exhibit A)

Section 4: The City Recorder is hereby directed to enter a statement of the assessments as above provided in the docket of the city liens and give notice thereof as provided by law.

Section 5: Inasmuch as this ordinance is necessary for the immediate preservation of the peace, health and safety of the City of Albany, Oregon, an emergency is hereby declared to exist; and this ordinance shall be in full force and effect immediately upon passage by the Council and approval by the Mayor.

Passed by Council: February 12, 1997

Approved by Mayor: February 12, 1997

Effective Date: February 12, 1997



Mayor

ATTEST:



City Recorder

SEWER SYSTEM DEVELOPMENT CHARGES

01/29/97 09:25:54

Name/Address	Description	
-----	-----	-----
SYNTHETECH	MARY B IND SUPP	11-03W-07CB-02618
	02/05/97 0441317	(WASTE SITE #240)
1290 INDUSTRIAL WAY SE	194,149.00	08238
ALBANY OR 97321	SSDC011701*	
.....		
Report total...	194,149.00	

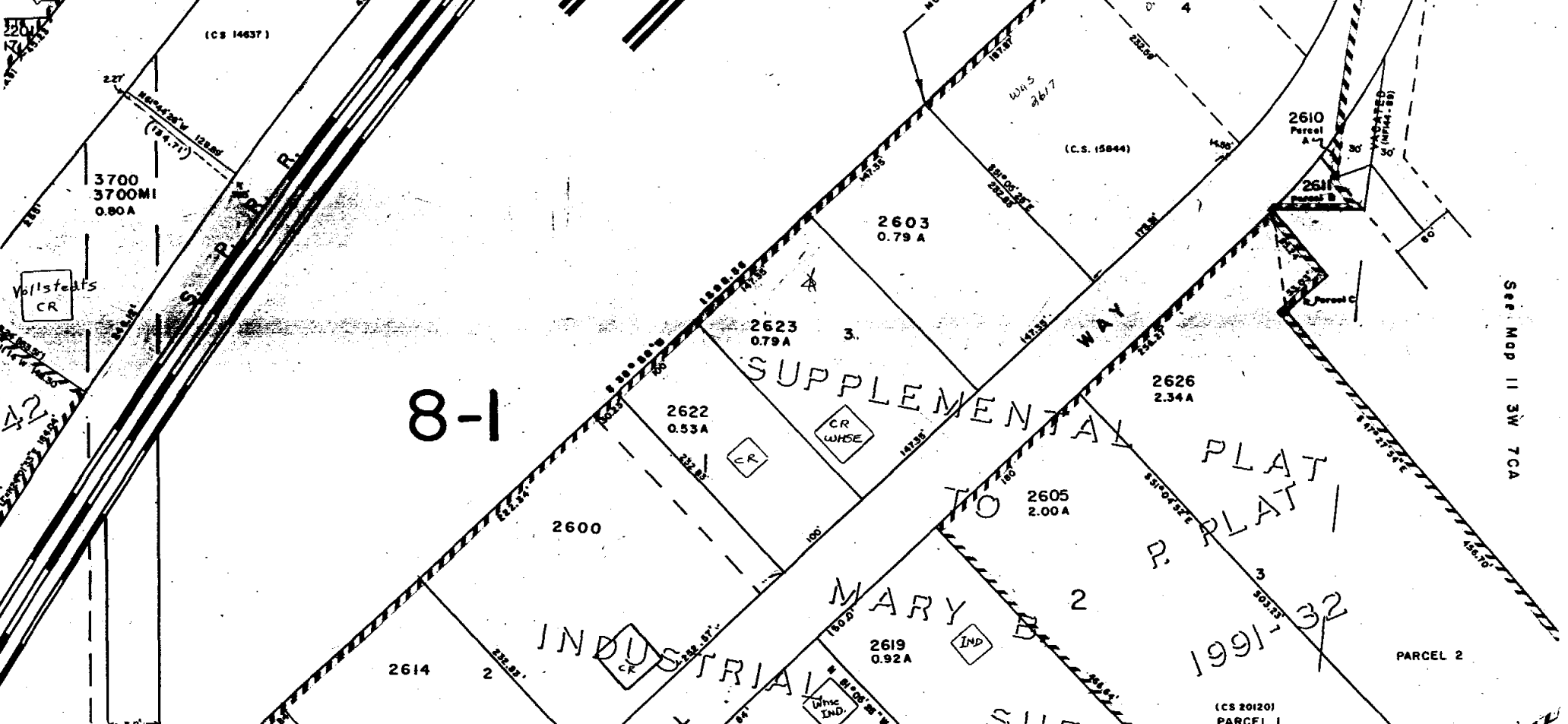
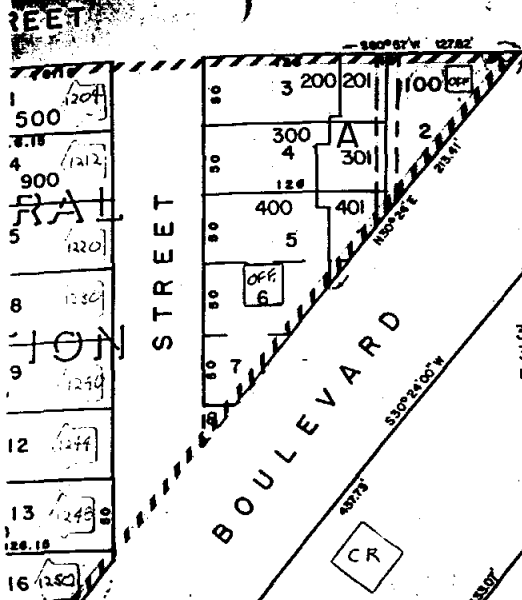
NW 1/4 SW 1/4 Sec 17 T.11S. R.3W. W.M.

3W 7CB
ALBANY

MAR 01 1996

1" = 100'

See Map II 3W 78C



8-1

1991-32

(CS 20120)
PARCEL 1

PARCEL 2

See Map II 3W 7CA