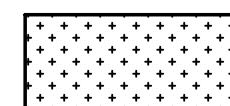
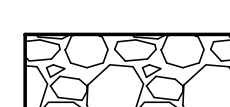
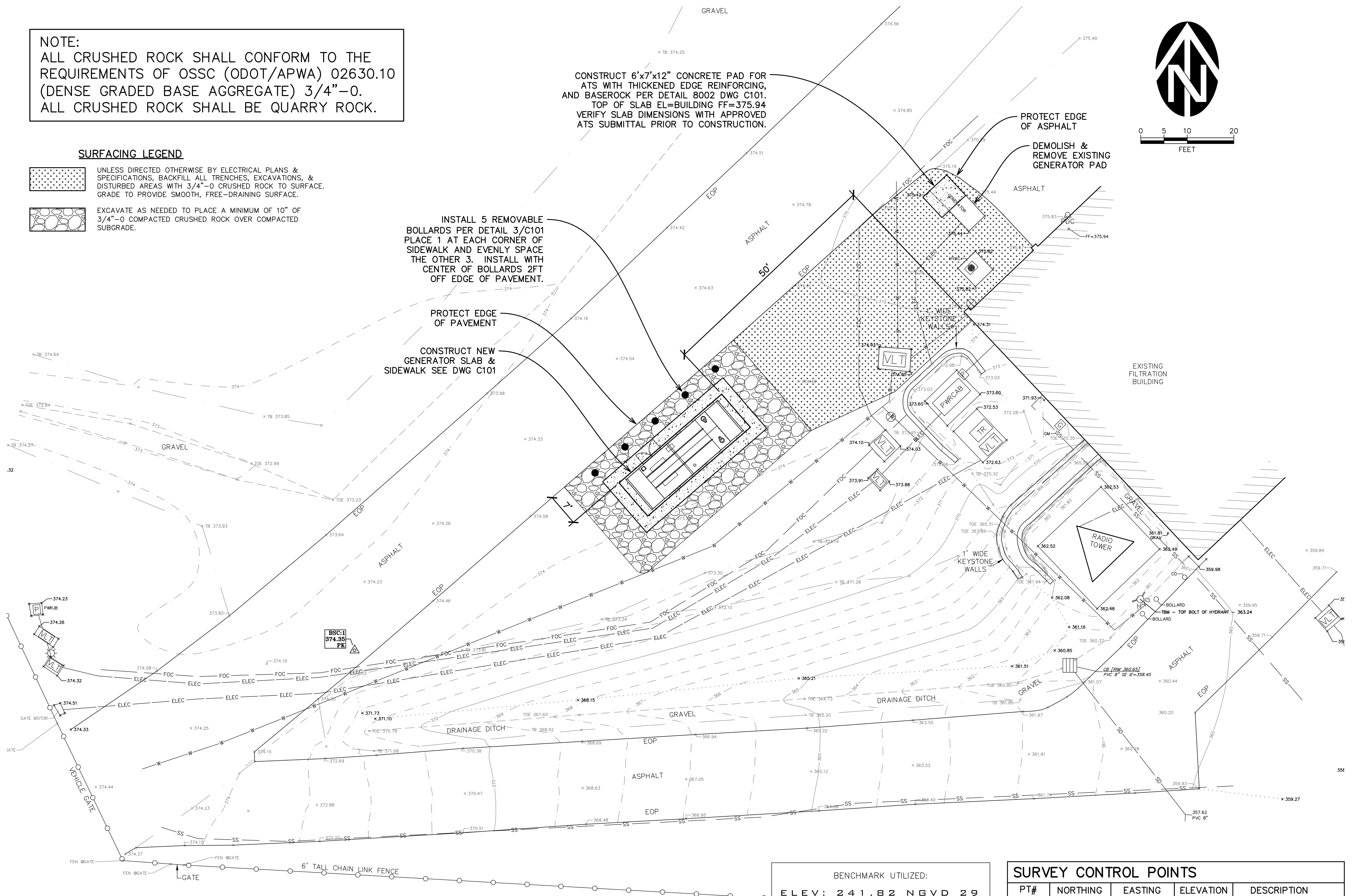
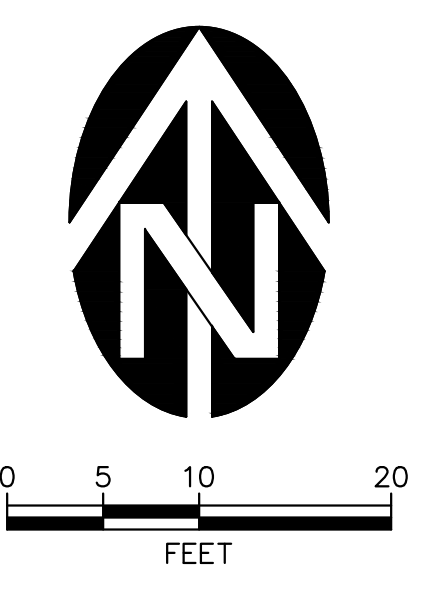


NOTE:
 ALL CRUSHED ROCK SHALL CONFORM TO THE REQUIREMENTS OF OSSC (ODOT/APWA) 02630.10 (DENSE GRADED BASE AGGREGATE) 3/4"-0. ALL CRUSHED ROCK SHALL BE QUARRY ROCK.

SURFACING LEGEND

-  UNLESS DIRECTED OTHERWISE BY ELECTRICAL PLANS & SPECIFICATIONS, BACKFILL ALL TRENCHES, EXCAVATIONS, & DISTURBED AREAS WITH 3/4"-0 CRUSHED ROCK TO SURFACE. GRADE TO PROVIDE SMOOTH, FREE-DRAINING SURFACE.
-  EXCAVATE AS NEEDED TO PLACE A MINIMUM OF 10" OF 3/4"-0 COMPACTED CRUSHED ROCK OVER COMPACTED SUBGRADE.

CONSTRUCT 6'x7'x12" CONCRETE PAD FOR ATS WITH THICKENED EDGE REINFORCING, AND BASEROCK PER DETAIL 8002 DWG C101. TOP OF SLAB EL=BUILDING FF=375.94 VERIFY SLAB DIMENSIONS WITH APPROVED ATS SUBMITTAL PRIOR TO CONSTRUCTION.



INSTALL 5 REMOVABLE BOLLARDS PER DETAIL 3/C101 PLACE 1 AT EACH CORNER OF SIDEWALK AND EVENLY SPACE THE OTHER 3. INSTALL WITH CENTER OF BOLLARDS 2FT OFF EDGE OF PAVEMENT.

PROTECT EDGE OF ASPHALT

DEMOLISH & REMOVE EXISTING GENERATOR PAD

PROTECT EDGE OF PAVEMENT

CONSTRUCT NEW GENERATOR SLAB & SIDEWALK SEE DWG C101

BENCHMARK UTILIZED:
 ELEV: 241.82 NGVD 29
 2" ALUMINUM CAP, 750' EASTERLY OF CENTURY DRIVE AND 25' SOUTHERLY OF BERRY DRIVE, GPS PT#94045 SHOWN ON SHEET 264 ALBANY/MILLERSBURG FINISHED WATER TRANSMISSION PIPELINE PROJECT NUMBER 170368.

SURVEY CONTROL POINTS				
PT#	NORTHING	EASTING	ELEVATION	DESCRIPTION
1	381345.1420	7542706.1740	374.35	PK
2	381609.1770	7543035.5650	373.68	PK
1263	381356.1330	7542874.9870	363.24	TBM-TOP BOLT HYDRANT

CIVIL SITE PLAN
 SCALE: 1" = 10'

10/7/2024 11:05:07 AM
 C:\Westect\DWG\Landis\Albany WTP Generator_3001_4020\Civil\Plots\C100_Civil_Site_Plan.dwg (C100 tab)

Landis Consulting
 ENGINEERING SERVICES
 Salem | Lake Oswego
 503-584-1576
 www.landisconsulting.com

Consultants
WESTECT ENGINEERING, INC.
 CONSULTING ENGINEERS AND PLANNERS
 3841 Foxglove Industrial Dr., S.E., Suite 100, Salem, OR 97302
 Phone: (503) 585-8474 Fax: (503) 585-3988
 E-mail: westect@westect-inc.com



ALBANY MILLERSBURG WATER TREATMENT PLANT
WTP GENERATOR
 405 NE DAVIDSON ST, LINN COUNTY
 ALBANY, OREGON

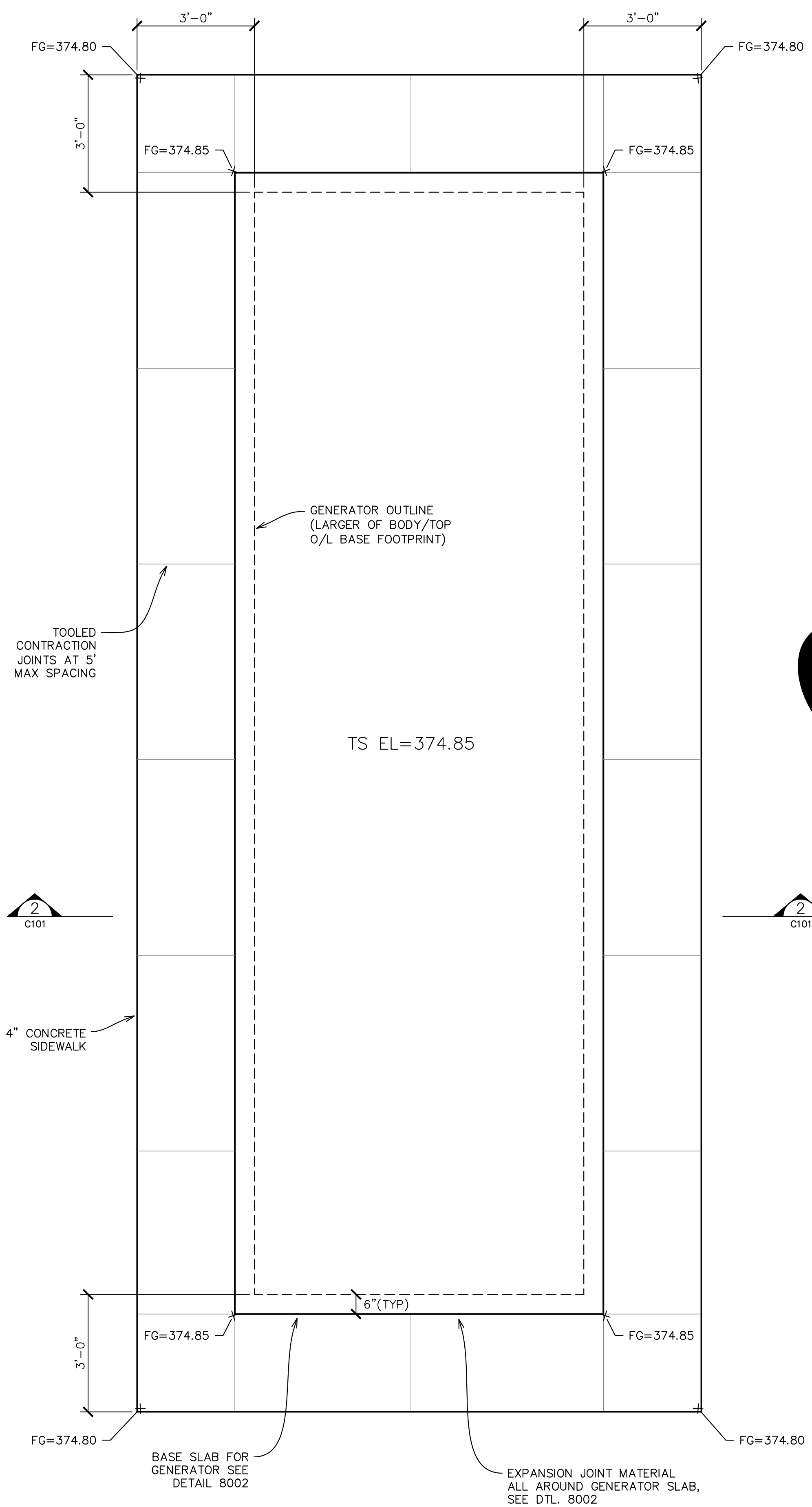
Rev	Description

CIVIL SITE PLAN

Design CJB
 Drawn TN
 Checked CJB
 Date 10/2024
 Proj. No. 7022301
 Drawing No.

C100

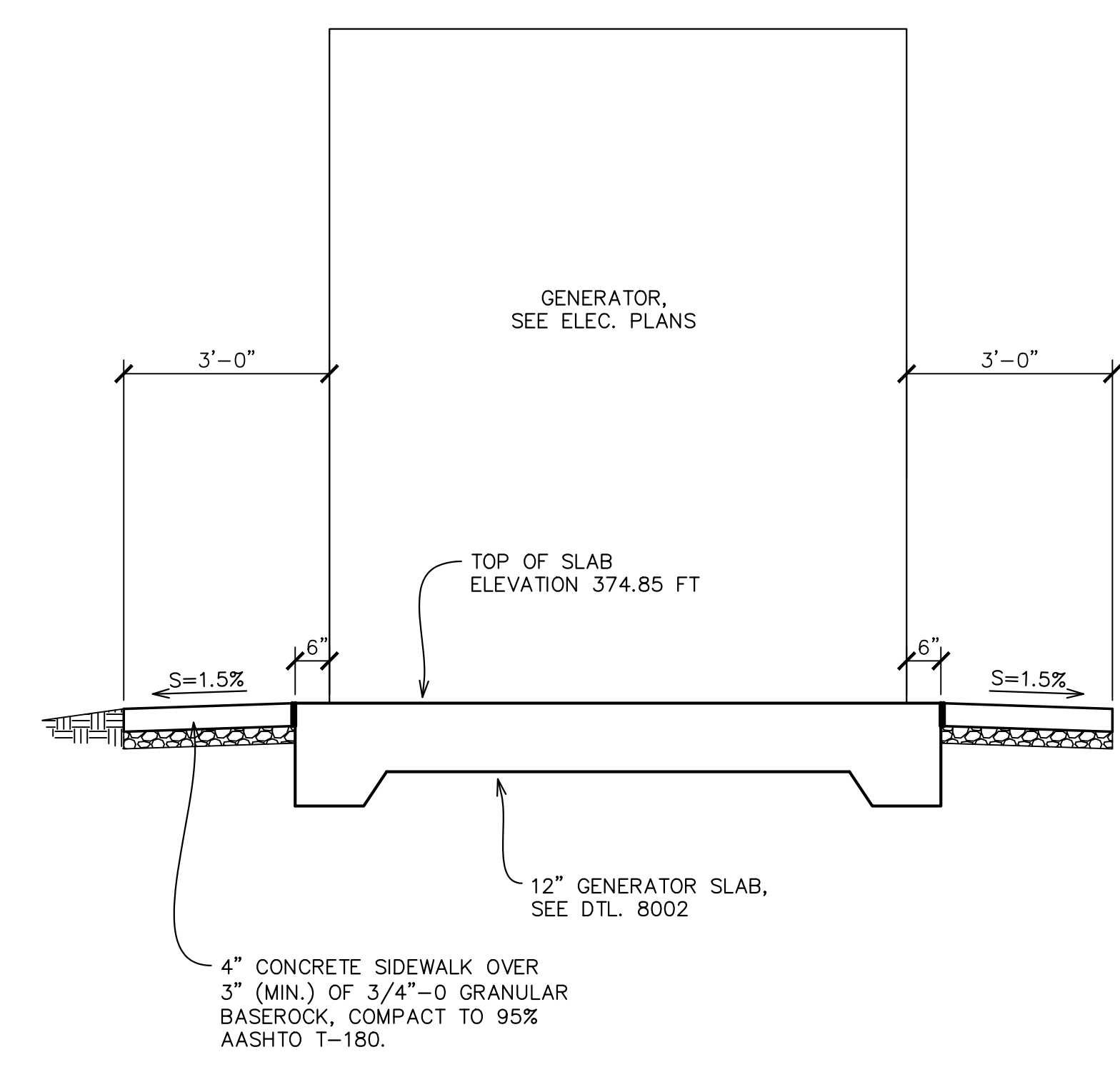
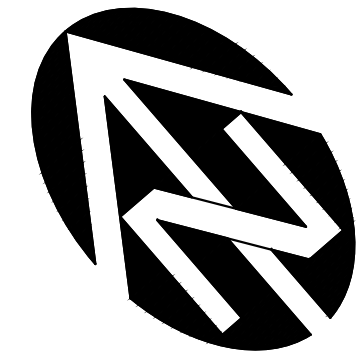
10/7/2024 11:05:11 AM C:\Westech\DWG\Landis\Albany WTP Generator_3001-4020-0\Civil\Plots\C101_Civil_Details.dwg, (C101: tab)



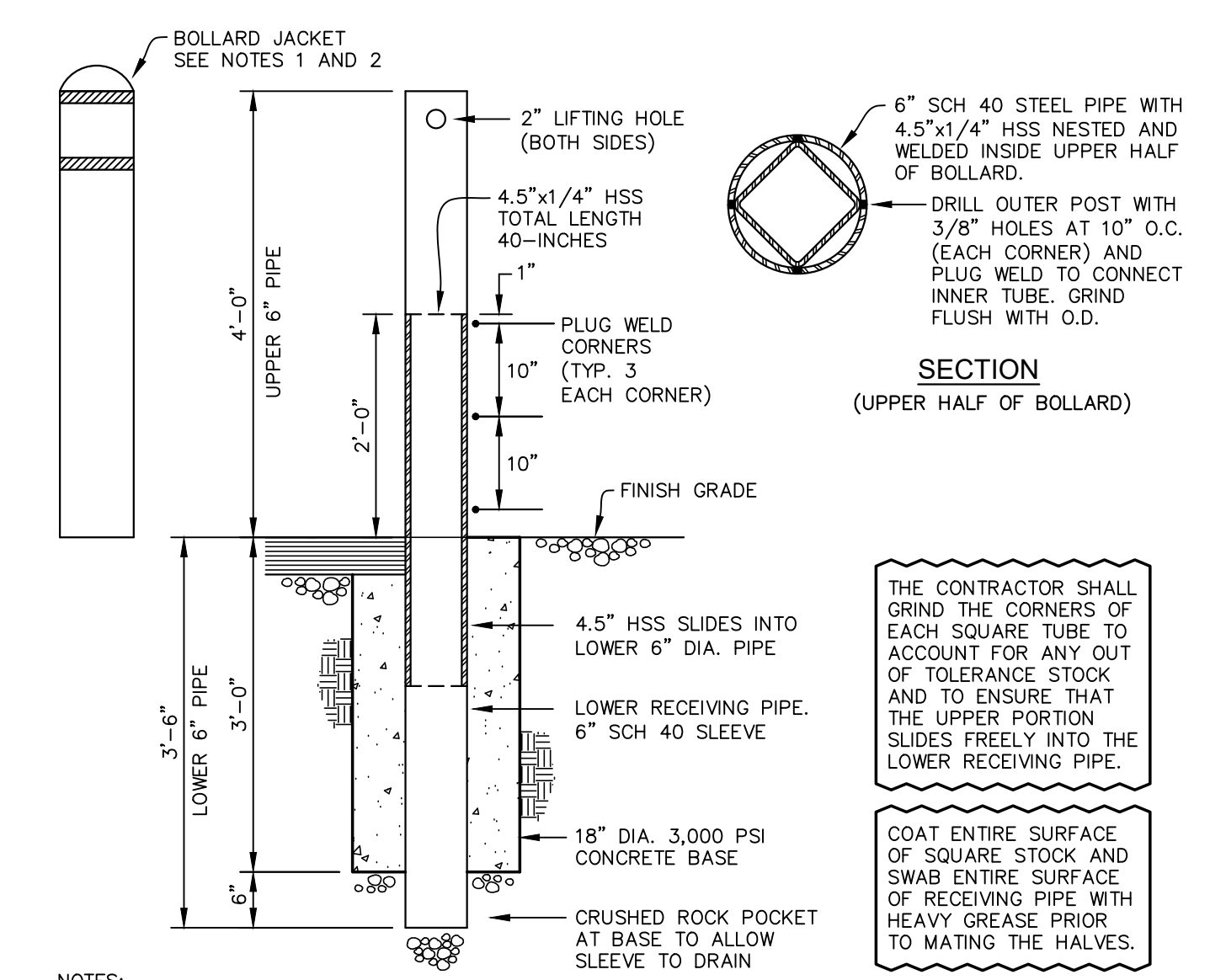
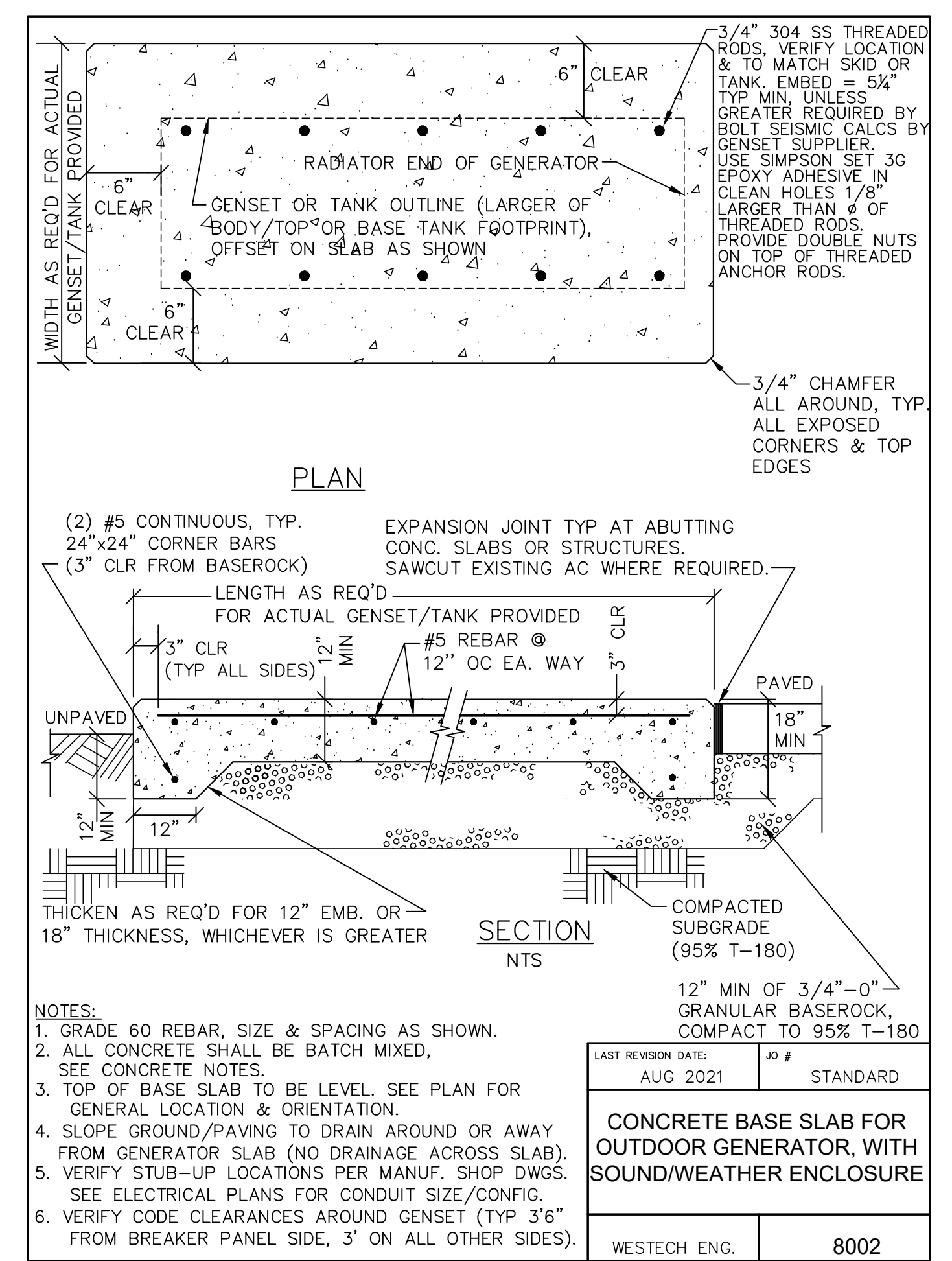
GENERATOR SLAB / SIDEWALK PLAN 1
1/2" = 1'-0"
C101

CONCRETE NOTES

1. THE OWNER SHALL PROVIDE COMPACTION, CONCRETE, AND CONCRETE ANCHOR TESTING BY AN INDEPENDENT LABORATORY. COORDINATE THE REQUIREMENTS WITH THE OWNER AND THE TESTING LABORATORY.
2. THE MINIMUM CEMENT CONTENT SHALL BE 7 SACKS (658 POUNDS) PER CUBIC YARD. AT THE CONTRACTOR'S OPTION, HIGH EARLY STRENGTH CEMENT MAY BE USED. IF HIGH EARLY STRENGTH CEMENT IS USED, THE CEMENT MAY BE REDUCED TO 6 SACKS (564 POUNDS) PER CUBIC YARD.
3. THE MAXIMUM WATER/CEMENT RATIO OF THE CONCRETE AT THE TIME OF PLACEMENT SHALL BE 0.42. AIR CONTENT SHALL BE 4.5% ± 1.5%.
4. THE MINIMUM COMPRESSIVE DESIGN STRENGTH OF THE CONCRETE SHALL BE 2,500 PSI IN 72 HOURS AND NOT LESS THAN 3,500 PSI IN 7 DAYS.
5. THE USE OF SUPER-PLASTICIZER IS AT THE CONTRACTOR'S OPTION, BUT IS ENCOURAGED.
6. CONTRACTOR SHALL SUBMIT AN ESTABLISHED MIX DESIGN WITH A DEMONSTRATED TEST HISTORY OR LABORATORY TRIAL BATCHES WITH TEST RESULTS TO ENGINEER FOR APPROVAL PRIOR TO ANY CONCRETE PLACEMENT.
7. ALL REINFORCING STEEL SHALL BE GRADE 60 REBAR.
8. CONTRACTOR SHALL PROVIDE CERTIFIED SHOP DRAWINGS FOR TRANSFORMERS & OTHER ELECTRICAL EQUIPMENT FOR REVIEW & APPROVAL. CONTRACTOR SHALL PROVIDE ANCHOR BOLT DESIGN FOR ALL EQUIPMENT. DESIGNS SHALL BE STAMPED BY A PROFESSIONAL ENGINEER LICENSED IN OREGON. ALL ANCHOR BOLT DESIGNS SHALL BE APPROVED BY THE ENGINEER PRIOR TO PLACEMENT OF CONCRETE.



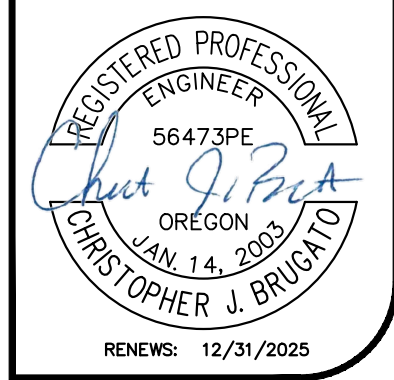
GENERATOR SLAB / SIDEWALK SECTION 2
1/2" = 1'-0"
C101



REMOVABLE BOLLARD 3
NO SCALE
C101

Landis Consulting
ENGINEERING SERVICES
Salem | Lake Oswego
503-584-1576
www.landisconsulting.com

Consultants
WESTECH ENGINEERING, INC.
CONSULTING ENGINEERS AND PLANNERS
3841 Foxglove Industrial Dr., S.E., Suite 100, Salem, OR 97302
Phone: (503) 585-8274 Fax: (503) 585-3986
E-mail: westech@westech-eng.com



ALBANY MILLERSBURG WATER TREATMENT PLANT
WTP GENERATOR
405 NE DAVIDSON ST, LINN COUNTY
ALBANY, OREGON

Rev	Description

CIVIL DETAILS

Design	CJB
Drawn	TN
Checked	CJB
Date	10/2024
Proj. No.	7022301
Drawing No.	C101