

Salem Avenue (Waverly Lake) Bridge Repairs

City of Albany

GENERAL NOTES

Provide materials and perform work according to the 2024 Oregon Standard Specifications for Construction.

Repair is designed in accordance with the 9th Edition of the AASHTO LRFD Bridge Design Specifications.

Seismic design is not considered in this project.

Provide reinforcing steel according to ASTM Specification A706 Grade 60, or AASHTO M31 (ASTM A615) Grade 60. Provide field bent and welded reinforcing according to ASTM Specification A706. Use the following splice lengths (unless shown otherwise).

Reinforcing Splice Lengths (Class B) Grade 60 $f'_c=4.0$ ksi										
Bar Size	#3	#4	#5	#6	#7	#8	#9	#10	#11	#14 & #18
Uncoated	1'-0"	1'-4"	1'-8"	2'-0"	2'-6"	3'-3"	4'-1"	5'-2"	6'-4"	Not Permitted

Splice reinforcing steel at alternate bars staggered at least one splice length or as far as possible unless shown otherwise.

Place bars 2" clear of the nearest face of concrete unless noted otherwise.

All reinforcement spacing is maximum unless noted otherwise.

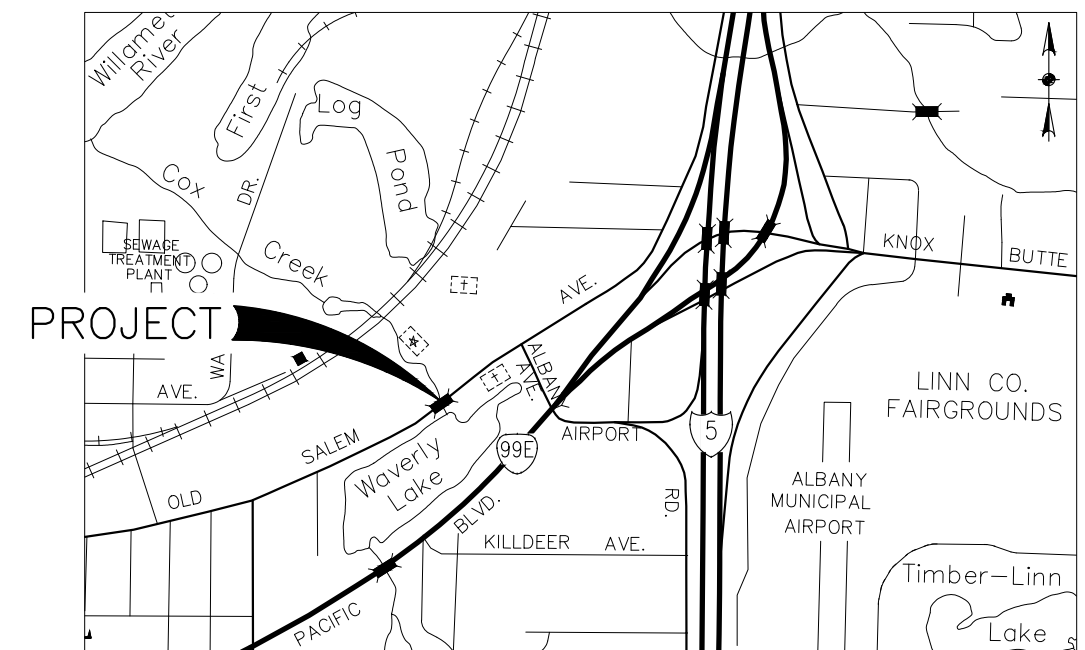
Provide Class 4000-1 1/2, 1, or 3/4" concrete for apron.

Provide Commercial Grade Concrete for fill beneath apron.

Protect all utilities in place. Contractor shall call 811 for utility locates prior to starting work.

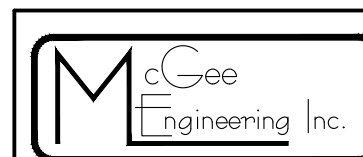
SHEET LIST

Sheet Number	Title
1	Title Sheet & General Notes
2	Site Plan
3	Temporary Access and Water Mgmt.
4	Concrete Apron Details
5	Channel Protection Details - 1
6	Channel Protection Details - 2



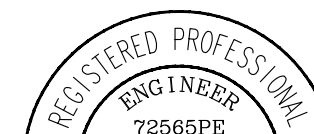
Vicinity Map
No Scale

Rev	Description	By	Date



P.O. Box 1067
Corvallis, OR 97339
Phone: (541) 757-1270
Fax: (541) 758-6585

Measures one inch on original drawing.
Adjust scales accordingly.



Renewal: 12/31/2023

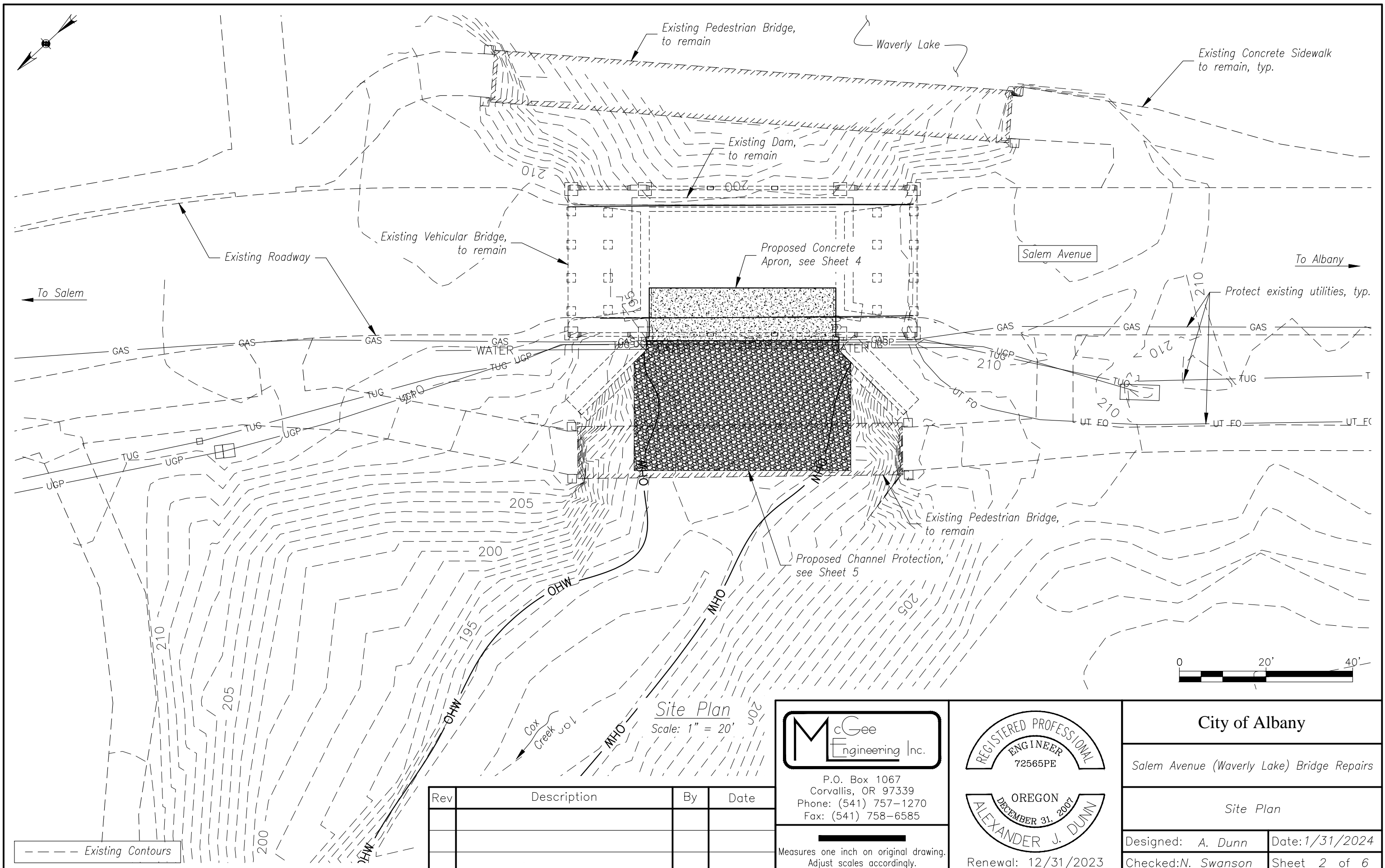
City of Albany

Salem Avenue (Waverly Lake) Bridge Repairs

Title Sheet & General Notes

Designed: A. Dunn Date: 1/31/2024

Checked: N. Swanson Sheet 1 of 6



--- Existing Contours

Site Plan
Scale: 1" = 20'

Rev	Description	By	Date

McGee Engineering Inc.
 P.O. Box 1067
 Corvallis, OR 97339
 Phone: (541) 757-1270
 Fax: (541) 758-6585

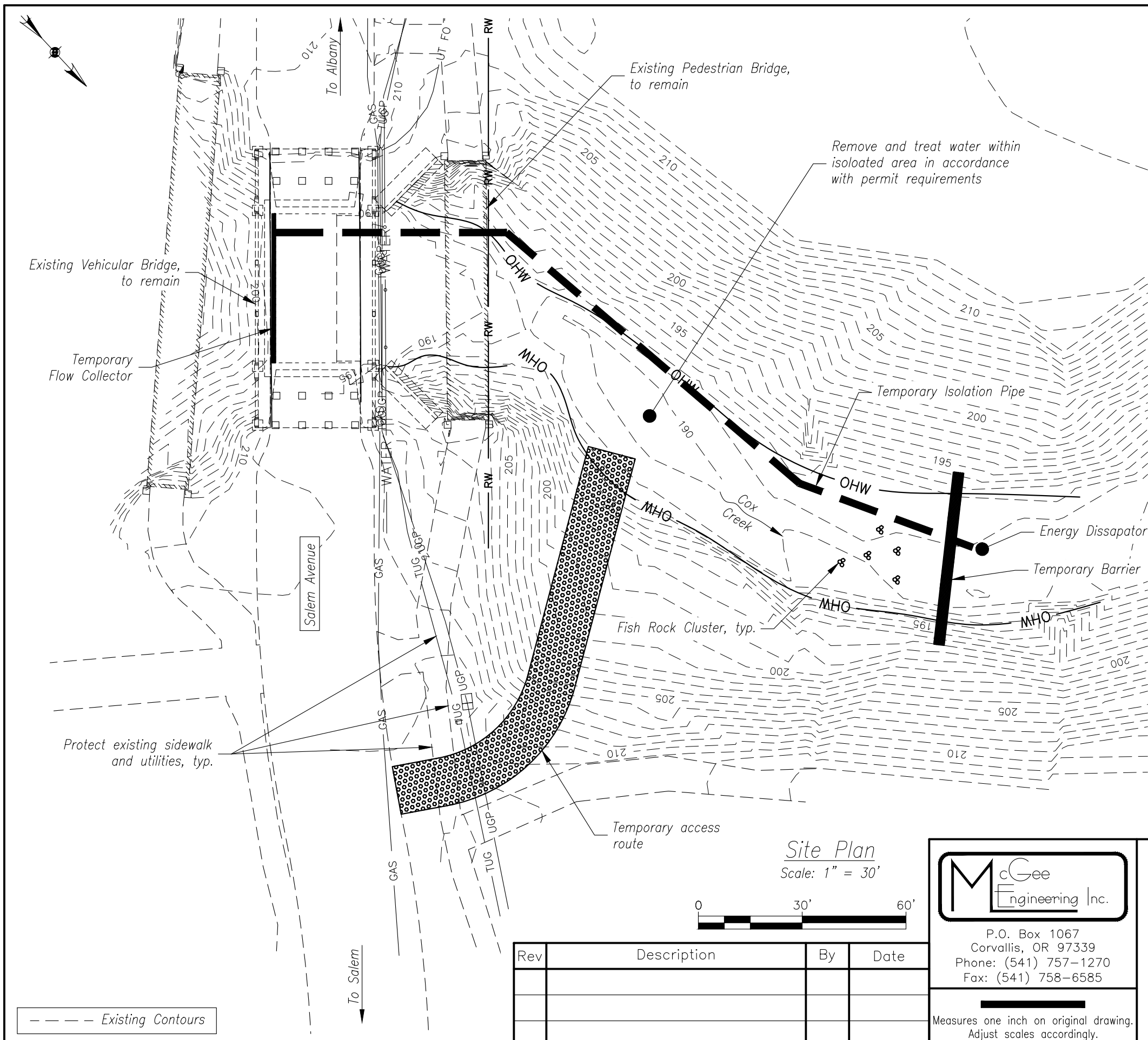
REGISTERED PROFESSIONAL
 ENGINEER
 72565PE

OREGON
 DECEMBER 31, 2023
 ALEXANDER J. DUNN

Renewal: 12/31/2023

Measures one inch on original drawing.
 Adjust scales accordingly.

City of Albany	
Salem Avenue (Waverly Lake) Bridge Repairs	
Site Plan	
Designed: A. Dunn	Date: 1/31/2024
Checked: N. Swanson	Sheet 2 of 6



GENERAL NOTES

Estimated seasonal Cox Creek low flow discharge for temporary water management is approximately 15 cubic feet per second (6750 gallons per minute).

The implementation of this concept Temporary Water Management Plan and the design, construction, maintenance, replacement and upgrading of this facility is the responsibility of the contractor until all construction is completed and approved.

The concept Temporary Water Management Facility shown on this plan is the minimum requirements for anticipated site conditions. During the construction periods, the facility shall be upgraded for unexpected storm events and to insure that sediment and sediment-laden water does not leave the site.

Remove all Temporary Water Management features and restore site as per plans and specifications.

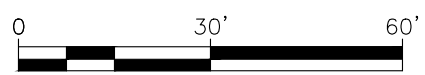
FISH ROCK SPECIFICATIONS

Minimum rock diameter is 12 inches.

Rocks shall be placed in clusters of 3 located generally as shown. Exact location of clusters shall be determined by Engineer in the field.

Minimum 7 foot separation between rock clusters.

Site Plan
Scale: 1" = 30'



Rev	Description	By	Date

McGee Engineering Inc.
 P.O. Box 1067
 Corvallis, OR 97339
 Phone: (541) 757-1270
 Fax: (541) 758-6585

Measures one inch on original drawing. Adjust scales accordingly.

REGISTERED PROFESSIONAL ENGINEER
 72565PE

OREGON
 DECEMBER 31, 2023
 ALEXANDER J. DUNN

Renewal: 12/31/2023

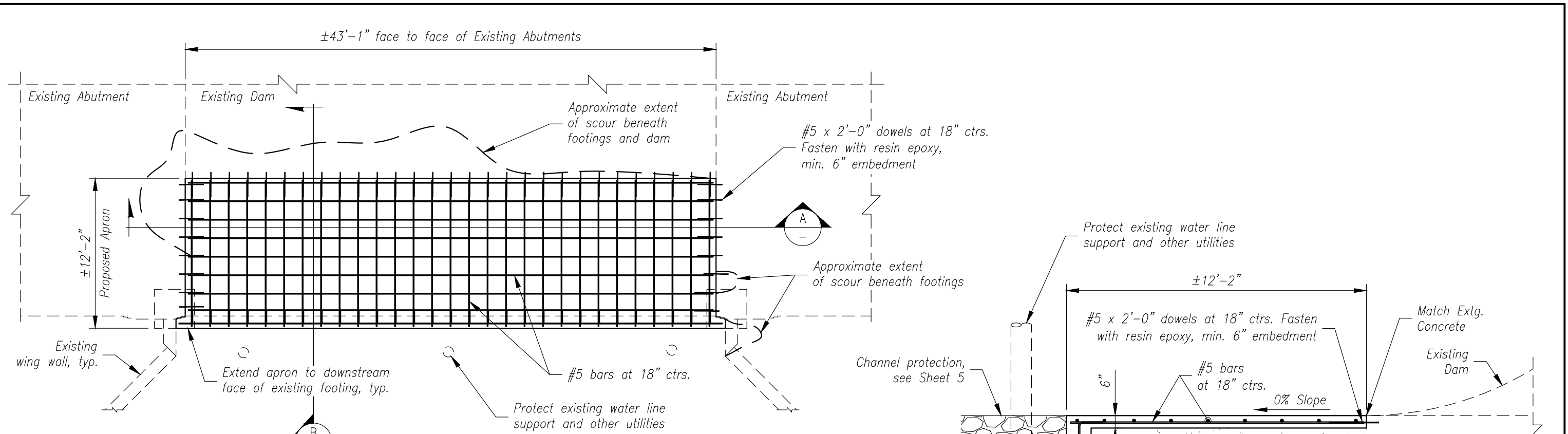
City of Albany

Salem Avenue (Waverly Lake) Bridge Repairs

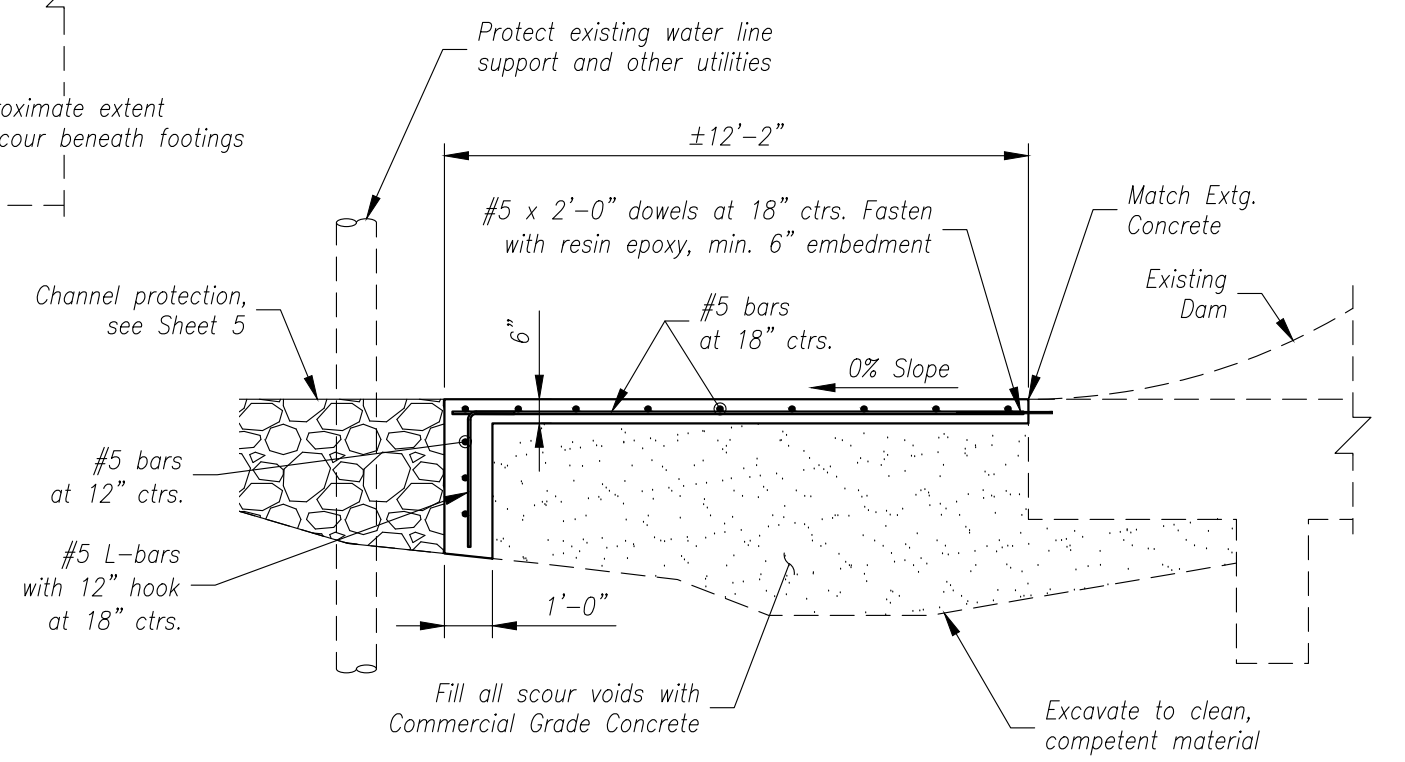
Temporary Access and Water Mgmt.

Designed: A. Dunn Date: 1/31/2024
 Checked: N. Swanson Sheet 3 of 6

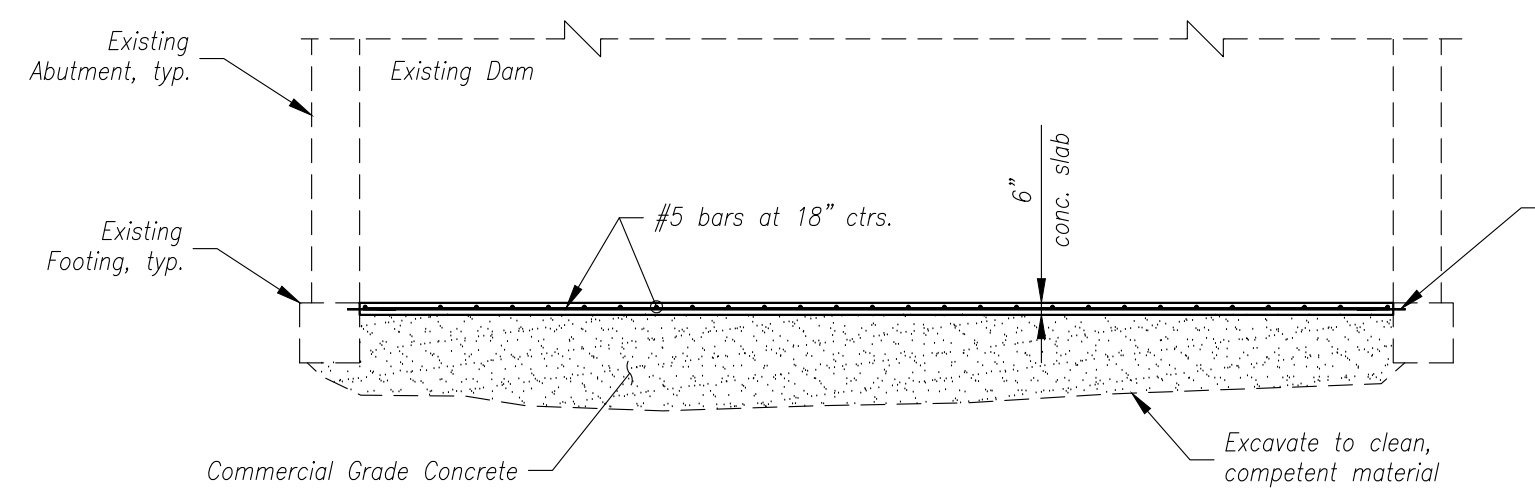
--- Existing Contours



Plan
Scale: 1/8" = 1'-0"



Section
Scale: 1/4" = 1'-0"



Section
Scale: 1/8" = 1'-0"

Rev	Description	By	Date

McGee Engineering Inc.

P.O. Box 1067
Corvallis, OR 97339
Phone: (541) 757-1270
Fax: (541) 758-6585

Measures one inch on original drawing. Adjust scales accordingly.

REGISTERED PROFESSIONAL ENGINEER
72565PE

OREGON
ALEXANDER J. DUNN
DECEMBER 31, 2007

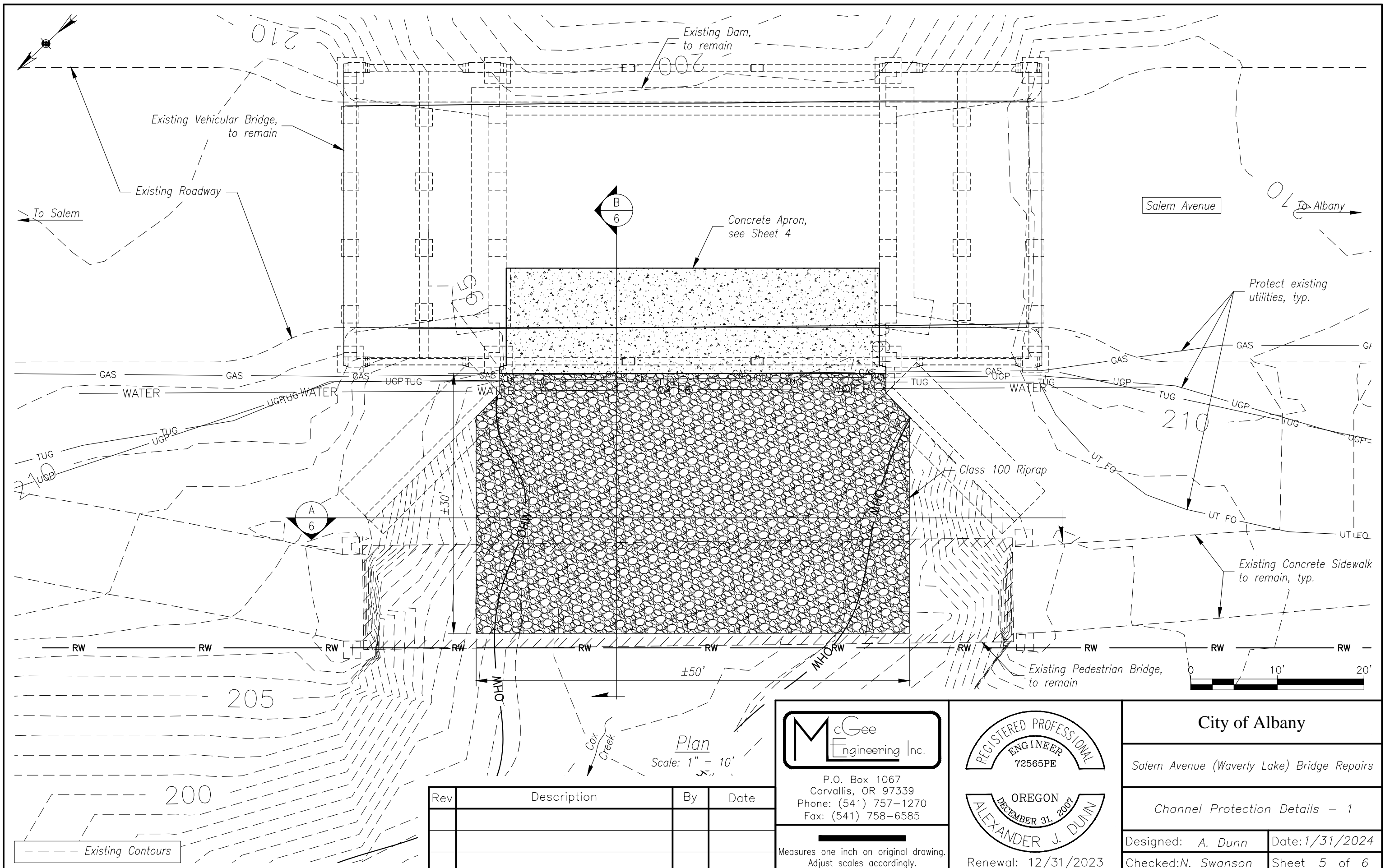
Renewal: 12/31/2023

City of Albany

Salem Avenue (Waverly Lake) Bridge Repairs

Concrete Apron Details

Designed: A. Dunn Date: 1/31/2024
Checked: N. Swanson Sheet 4 of 6



Plan
Scale: 1" = 10'

Rev	Description	By	Date

McGee Engineering Inc.
 P.O. Box 1067
 Corvallis, OR 97339
 Phone: (541) 757-1270
 Fax: (541) 758-6585

Measures one inch on original drawing.
 Adjust scales accordingly.

REGISTERED PROFESSIONAL
 ENGINEER
 72565PE

OREGON
 DECEMBER 31, 2021
 ALEXANDER J. DUNN

Renewal: 12/31/2023

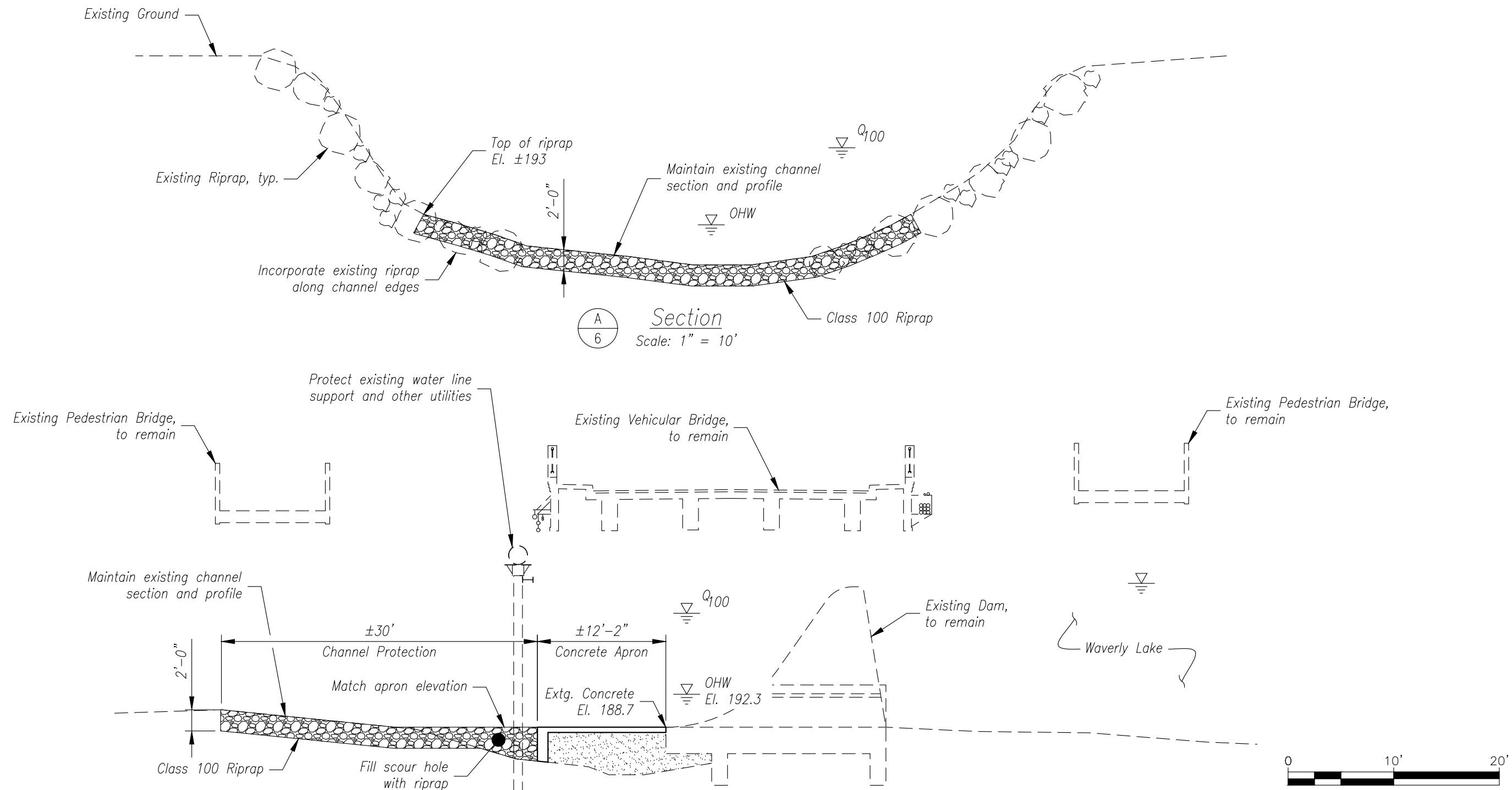
City of Albany

Salem Avenue (Waverly Lake) Bridge Repairs

Channel Protection Details - 1

Designed: A. Dunn Date: 1/31/2024
 Checked: N. Swanson Sheet 5 of 6

--- Existing Contours



A
6 Section
Scale: 1" = 10'

B
6 Section
Scale: 1" = 10'

Class 100 Riprap

% by weight	Size of Rock	
	lb.	appx. dia. (in)
20	100-60	13-11
30	60-25	11-8
40	25-2	8-4
10	2-0	4-0

Rev	Description	By	Date

McGee Engineering Inc.
 P.O. Box 1067
 Corvallis, OR 97339
 Phone: (541) 757-1270
 Fax: (541) 758-6585

Measures one inch on original drawing.
 Adjust scales accordingly.

REGISTERED PROFESSIONAL
 ENGINEER
 72565PE

OREGON
 DECEMBER 31, 2023
 ALEXANDER J. DUNN

Renewal: 12/31/2023

City of Albany

Salem Avenue (Waverly Lake) Bridge Repairs

Channel Protection Details - 2

Designed: A. Dunn Date: 1/31/2024
 Checked: N. Swanson Sheet 6 of 6