

# CITY OF ALBANY

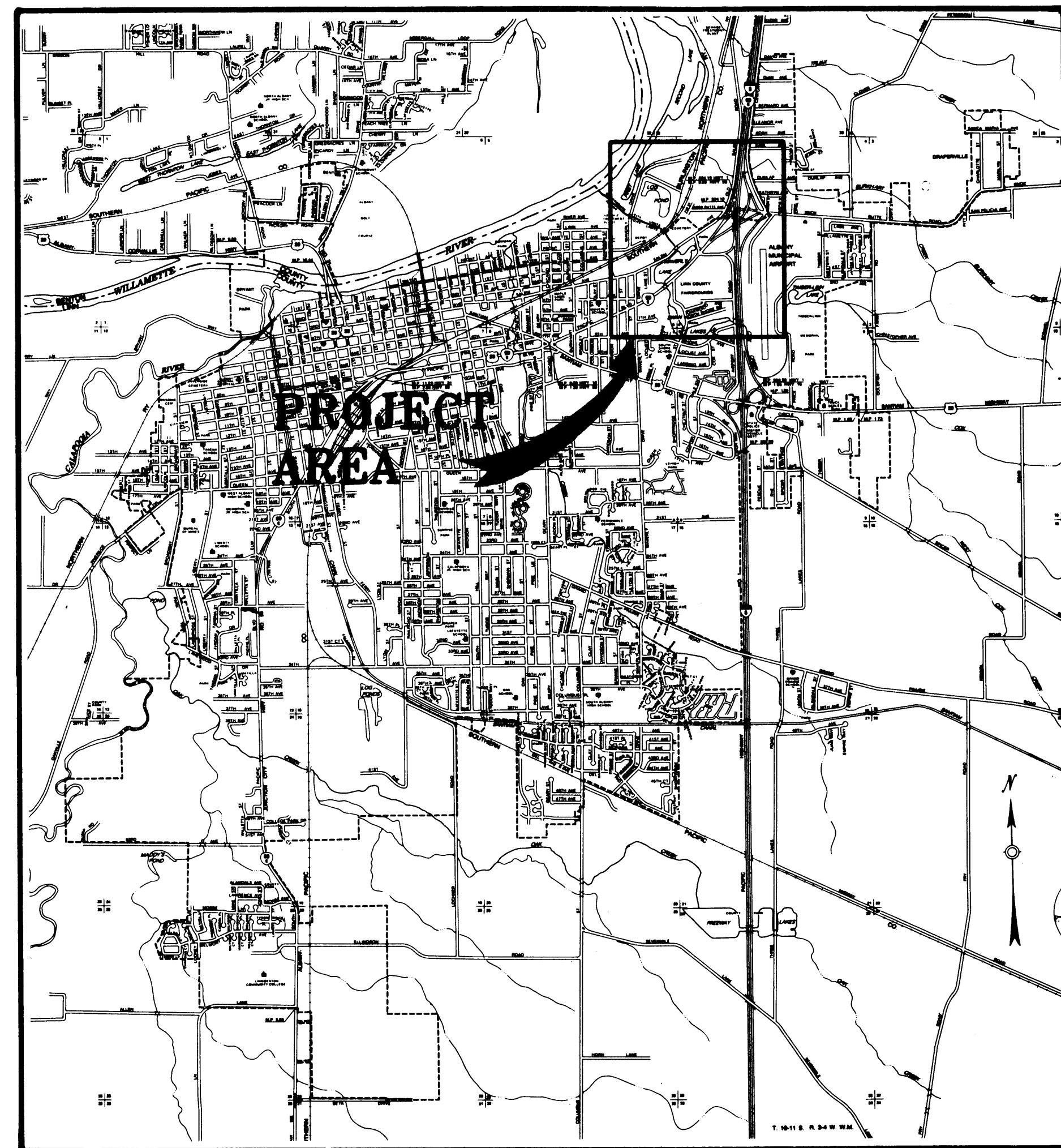
## PUBLIC WORKS DEPARTMENT

### ENGINEERING DIVISION

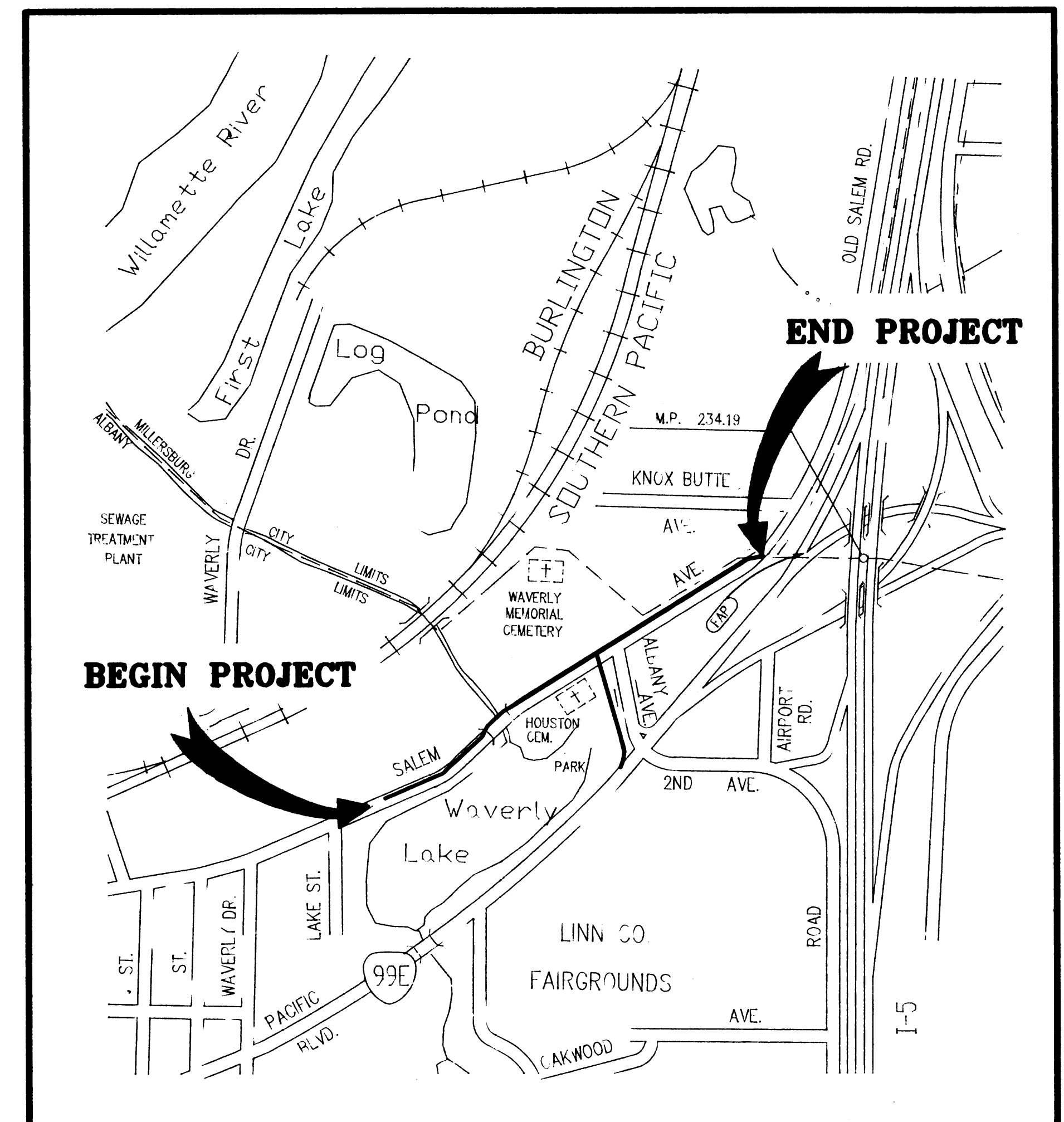
#### MILLERSBURG WATERLINE

WL-90-2

<b>SHEET #2</b>	<b>STA. 0+00 TO 11+00</b>
<b>SHEET #3</b>	<b>STA. 11+00 TO END</b>
<b>SHEET #4</b>	<b>DETAIL SHEET</b>
<b>SHEET #5</b>	<b>METER AND TELEMTRY</b>



VICINITY MAP SCALE 1"=3000'

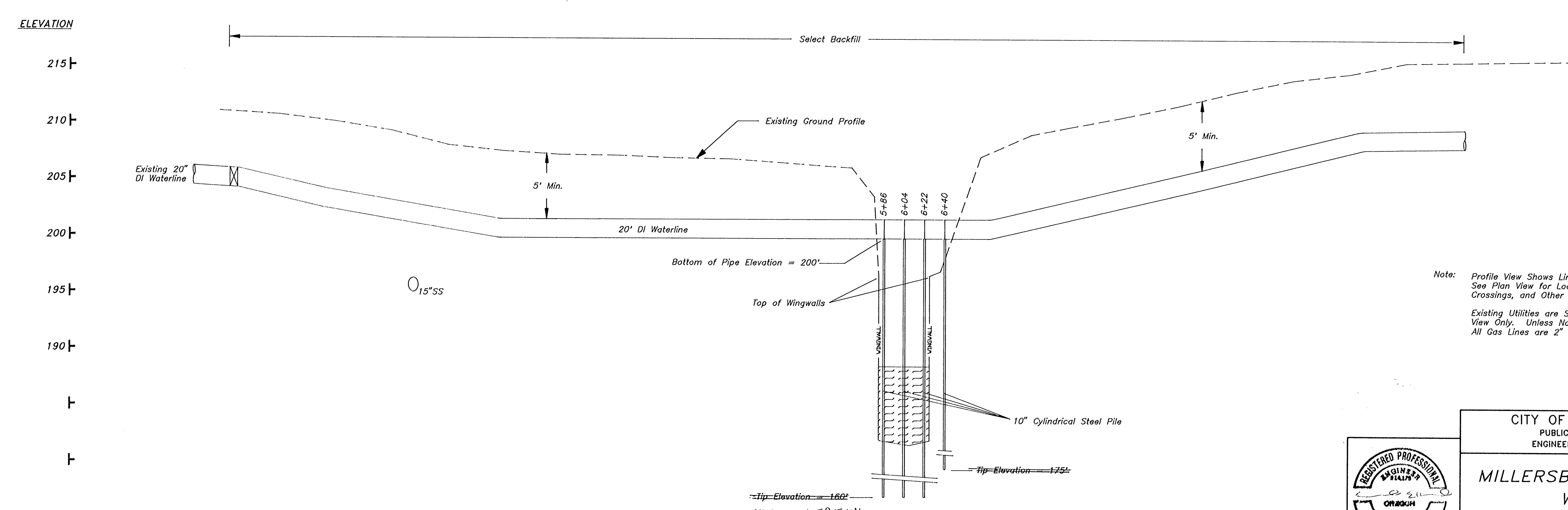
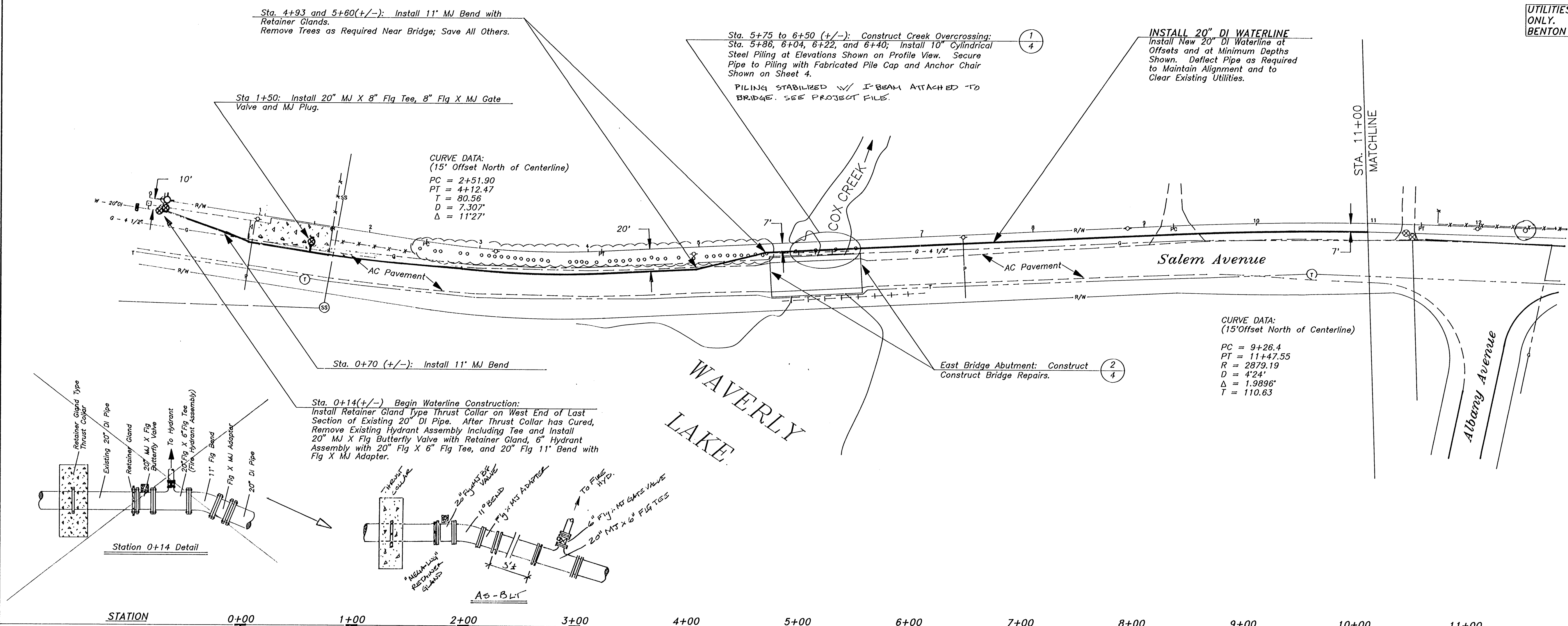


PROJECT AREA (N.T.S.)



DATE	REVISIONS NO.	BY	DESIGNED	REY
5-1-72	ASB/LLT	GMR	CHECKED	ELLEA
			SCALE	HORIZ. 1" = 50'
				VERT. 1" = 5'

UTILITIES SHOWN ARE FOR REFERENCE ONLY. FOR FIELD LOCATE, CALL LINN-BENTON UTILITY COUNCIL AT 752-8631.

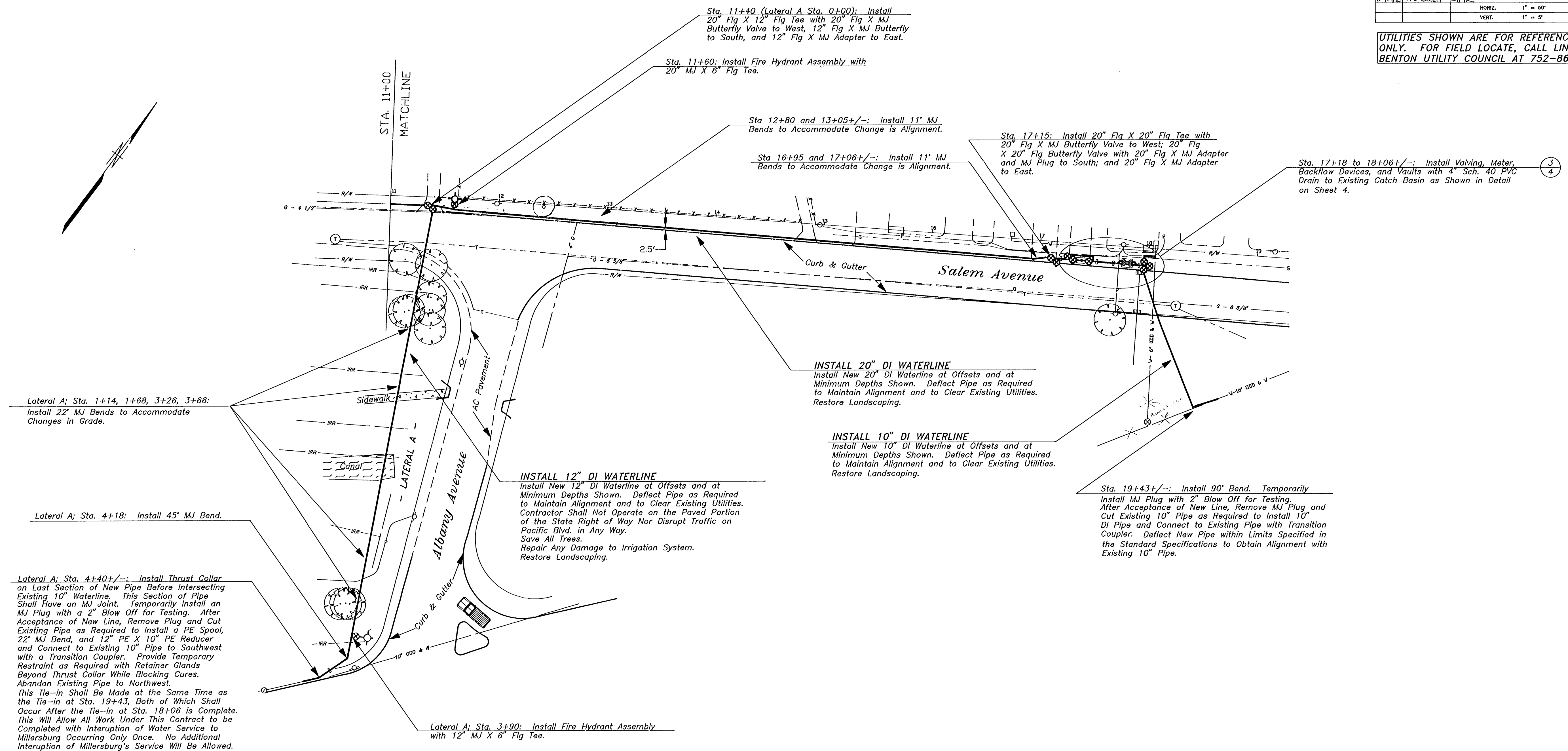


CITY OF ALBANY, OREGON  
PUBLIC WORKS DEPARTMENT  
ENGINEERING/UTILITIES DIVISION

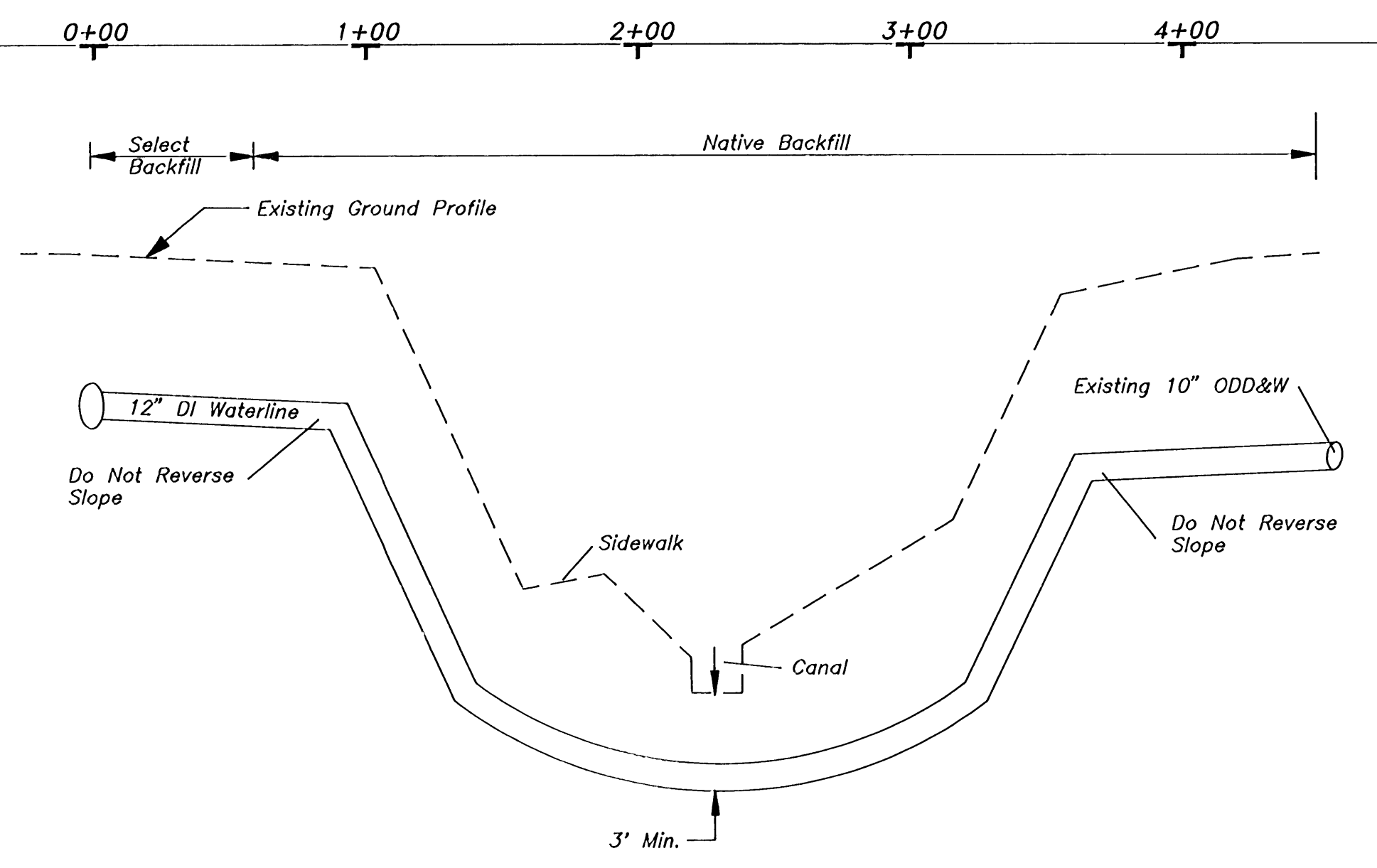
**MILLERSBURG WATERLINE**  
WL-90-2  
Sta. 0+00 to Sta. 11+00

REVISIONS	DESIGNED	REVISED
DATE	NO.	BY
5-1-92	AS SHOWN	CMR
	CHECKED	ELLEARD/YEAGER
	SCALE:	1" = 50'
	HORIZ.	1" = 50'
	VERT.	1" = 5'

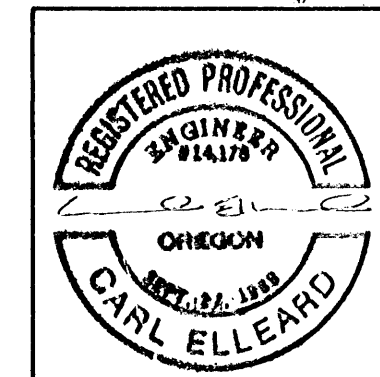
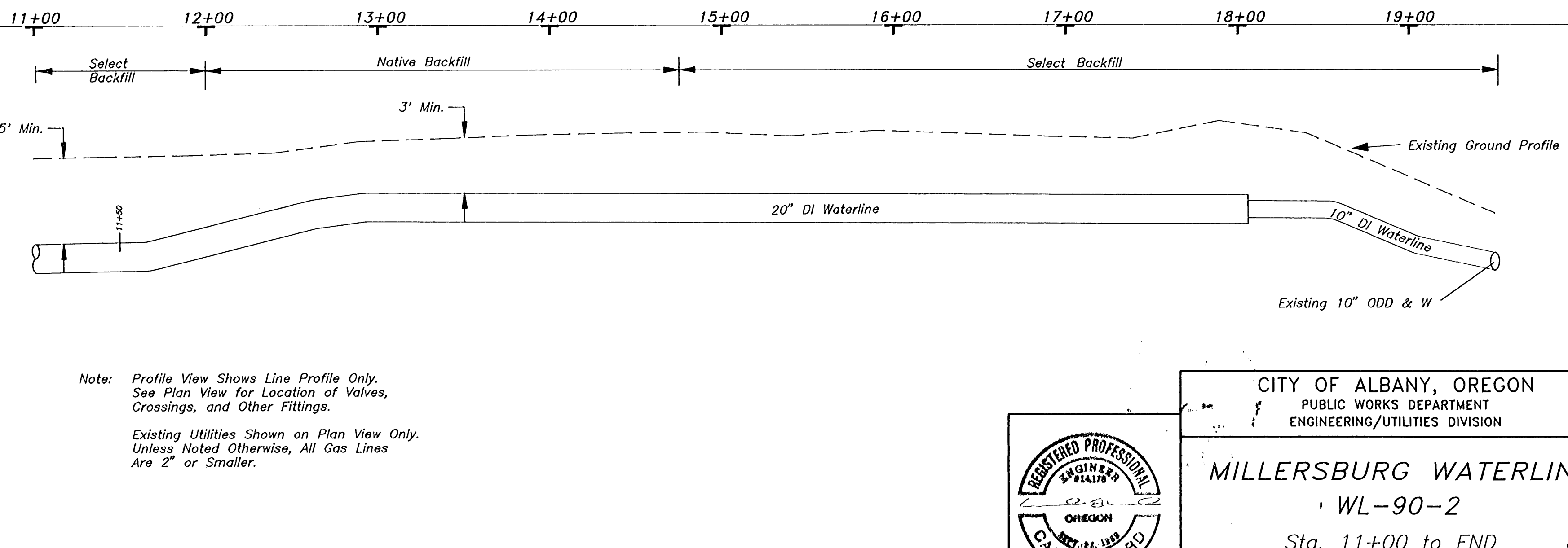
UTILITIES SHOWN ARE FOR REFERENCE ONLY. FOR FIELD LOCATE, CALL LINN-BENTON UTILITY COUNCIL AT 752-8631.



LATERAL A STATION



MAINLINE STATION

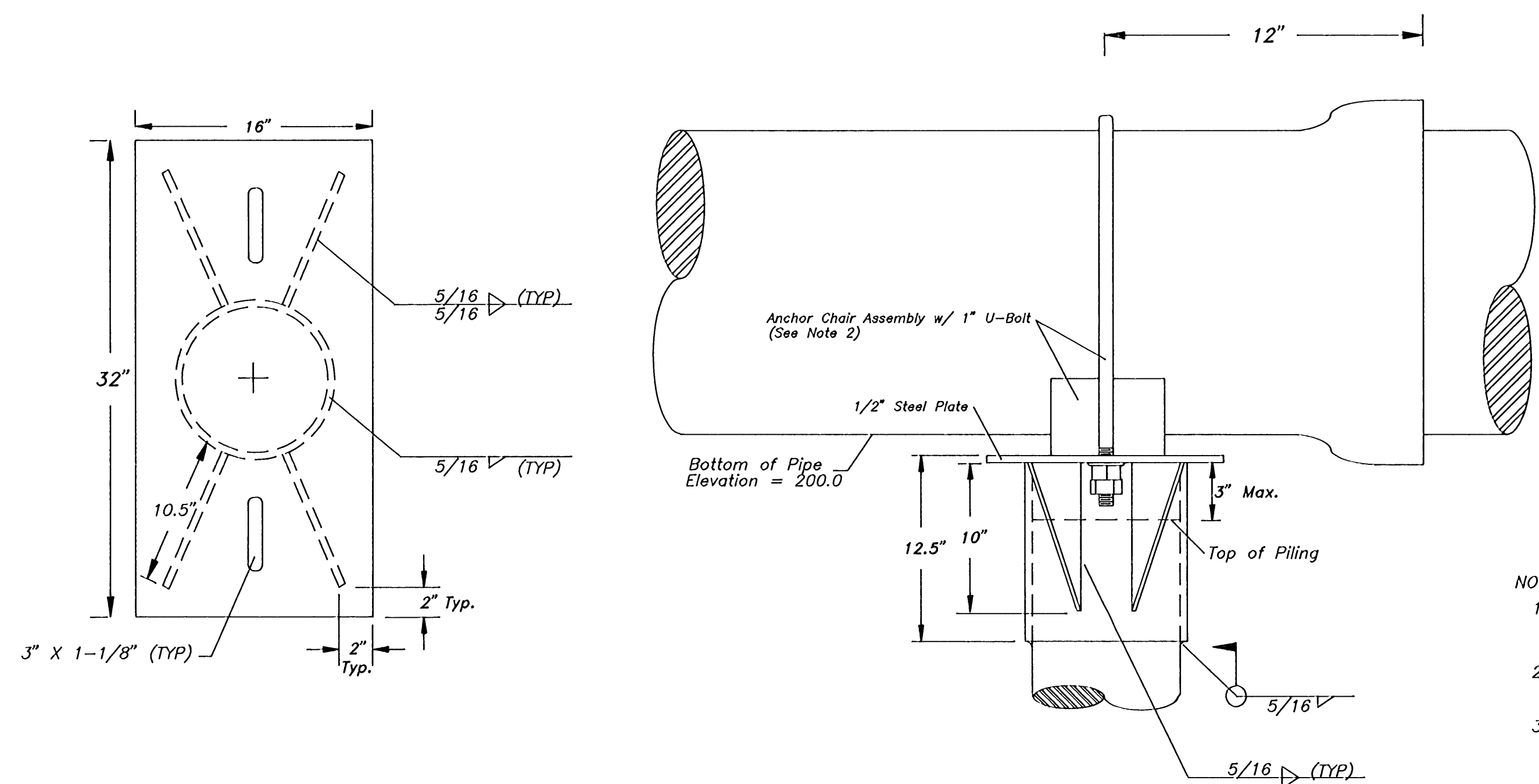


CITY OF ALBANY, OREGON  
PUBLIC WORKS DEPARTMENT  
ENGINEERING/UTILITIES DIVISION

**MILLERSBURG WATERLINE**  
WL-90-2  
Sta. 11+00 to END

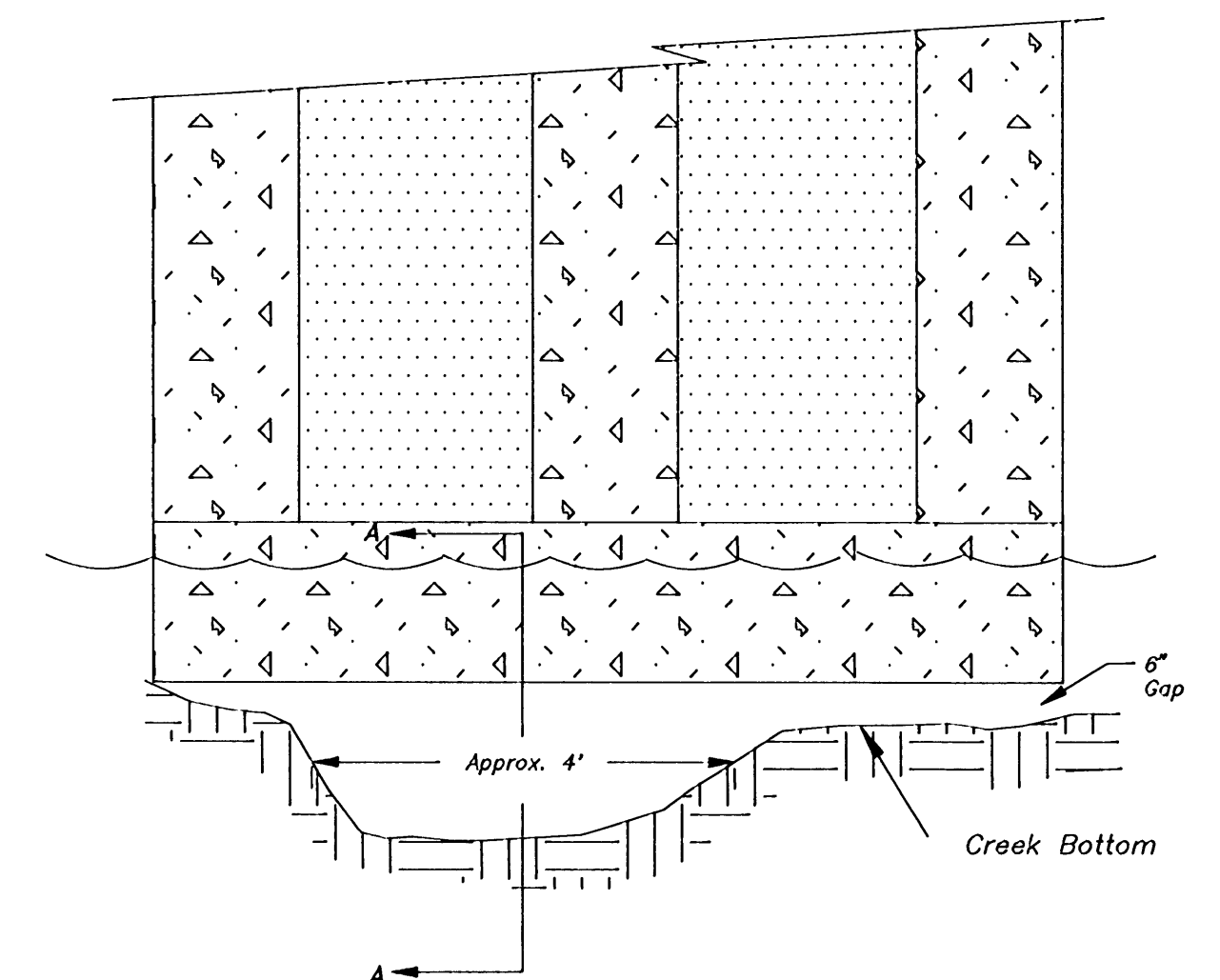


REVISIONS		DESIGNED	REYNOLDS
DATE	NO.	BY	REYNOLDS
5-1-76	As BLT	GHE	SCALE:
			CHECKED: ELLEARD/TEAGER
			HORIZ. 1" = 50'
			VERT. 1" = 5'

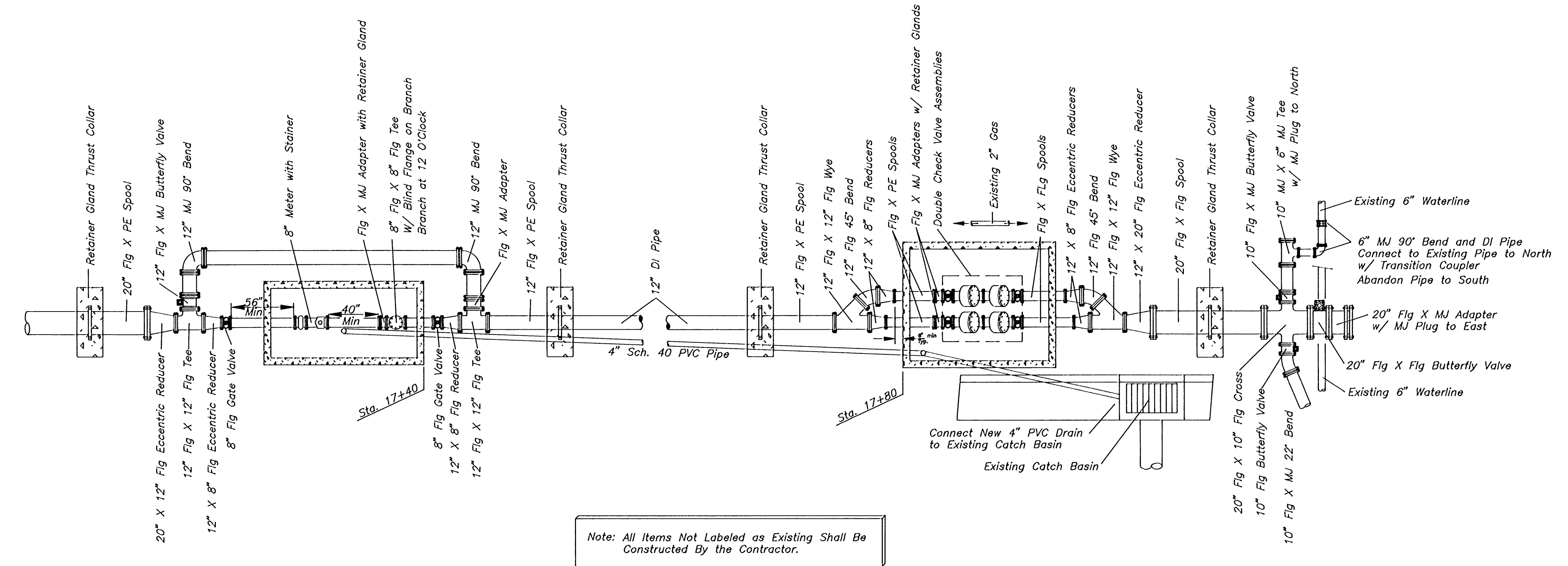


- NOTES:
- Piling Shall Be 10" Diameter Schedule 40 (3/8" Wall Thickness) With an O.D. of 10.75". Clearance Between the Pile and the Pile Cap Shall Be Kept to a Minimum ( Pile Cap I.D. = 11.00" Max.)
  - Anchor Chair Shall Be a "Grinnell" Fig. 198 (Anchor Chair), or Approved Equal. The U-Bolt Shall Be Secured With Flat Washer and Double Nut.
  - All Steel Plate Shall Be 1/2" Thick in Accordance with ASTM A36.

1 FABRICATED PILE CAP AND ANCHOR CHAIR DETAIL



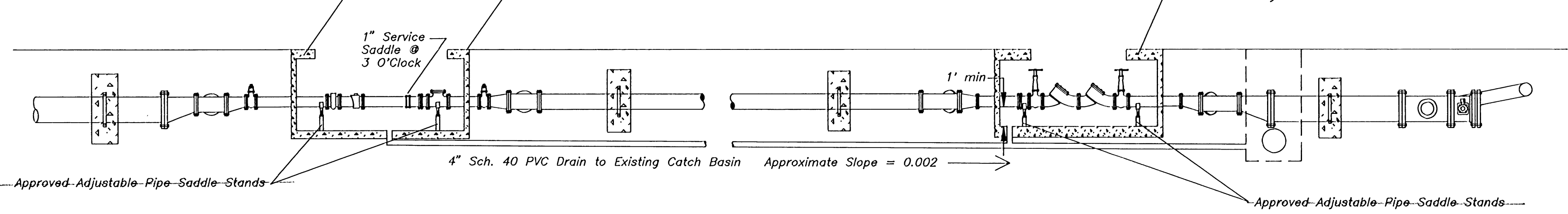
Face - East Abutment (NTS)  
(Similar to West Abutment)



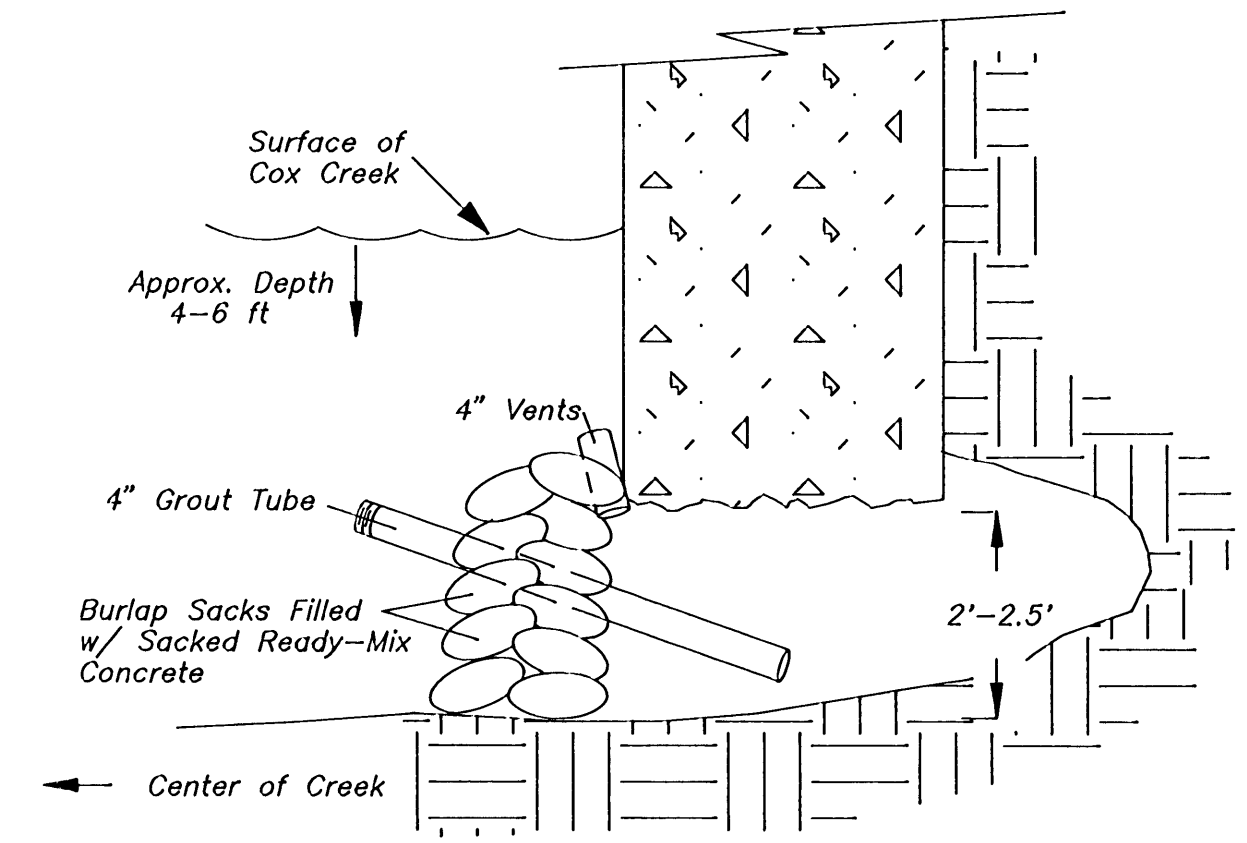
Note: All Items Not Labeled as Existing Shall Be Constructed By the Contractor.

5'-8" Wide X 11'-2" Long X 5'-2" Deep (Outside Dimen.)  
Precast Concrete Vault w/ Diamond Plate Doors (Three)  
Providing 2'-10.5" X 8'-11.5" Clear Opening

8'-8" Wide X 10'-8" Long X 5'-2" Deep (Outside Dimen.)  
Precast Concrete Vault w/ 48" Wide X 72" Long  
Torsion Spring Double Doors (Diamond Plate) Centered  
Over Assembly.



3 8' METER, BACKFLOW PREVENTION, AND VAULT DETAIL



Section A-A (NTS)

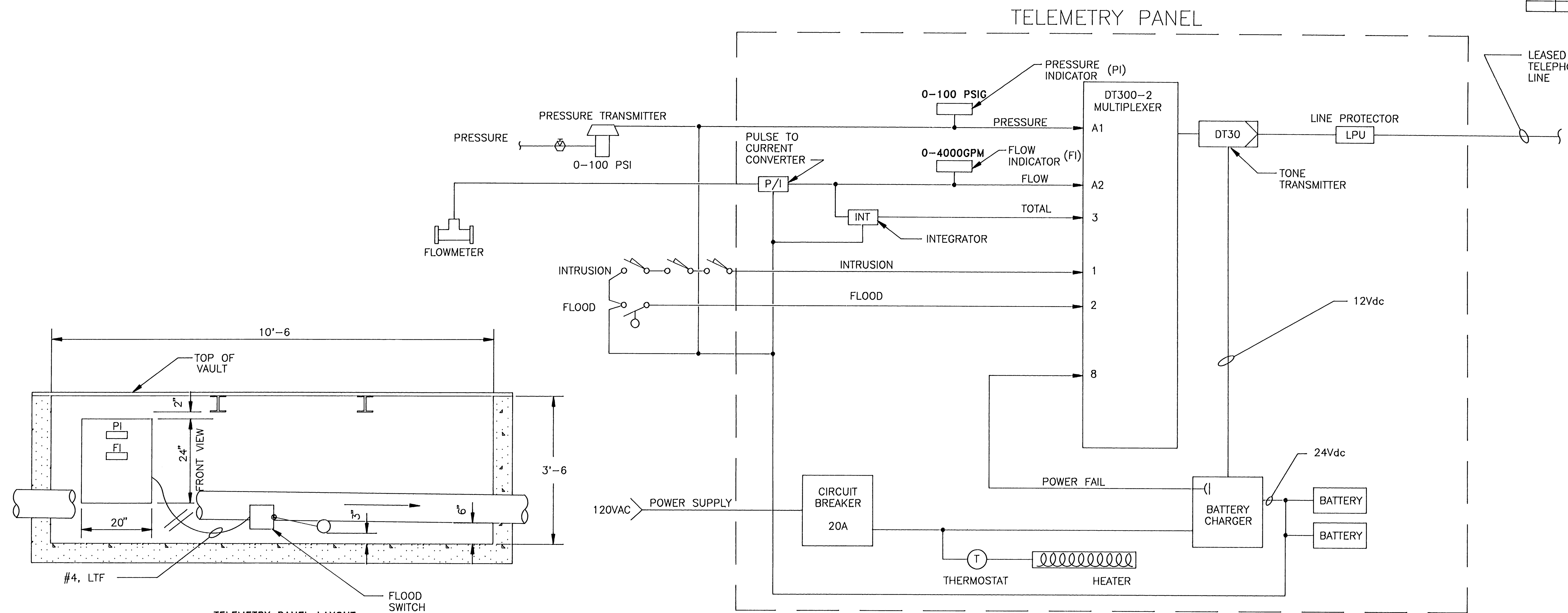
- Note:
- Work to Be Performed on Both East and West Abutments.
  - Stack Burlap Bags Filled w/ Dry "Ready-Mix" 3000 psi Concrete Along the Full Length of the Abutment to Isolate Erosion and Prevent Escape of Grout.
  - Install 4" Grout Tube and 4" Vents as Required to Allow Displaced Water to Escape Cavity.
  - Fill Cavity w/ Type B Grout by Pumping. A Full Cavity will be Indicated by Grout Escaping Through Vents.

2 COX CREEK (SALEM AVENUE) BRIDGE REPAIR



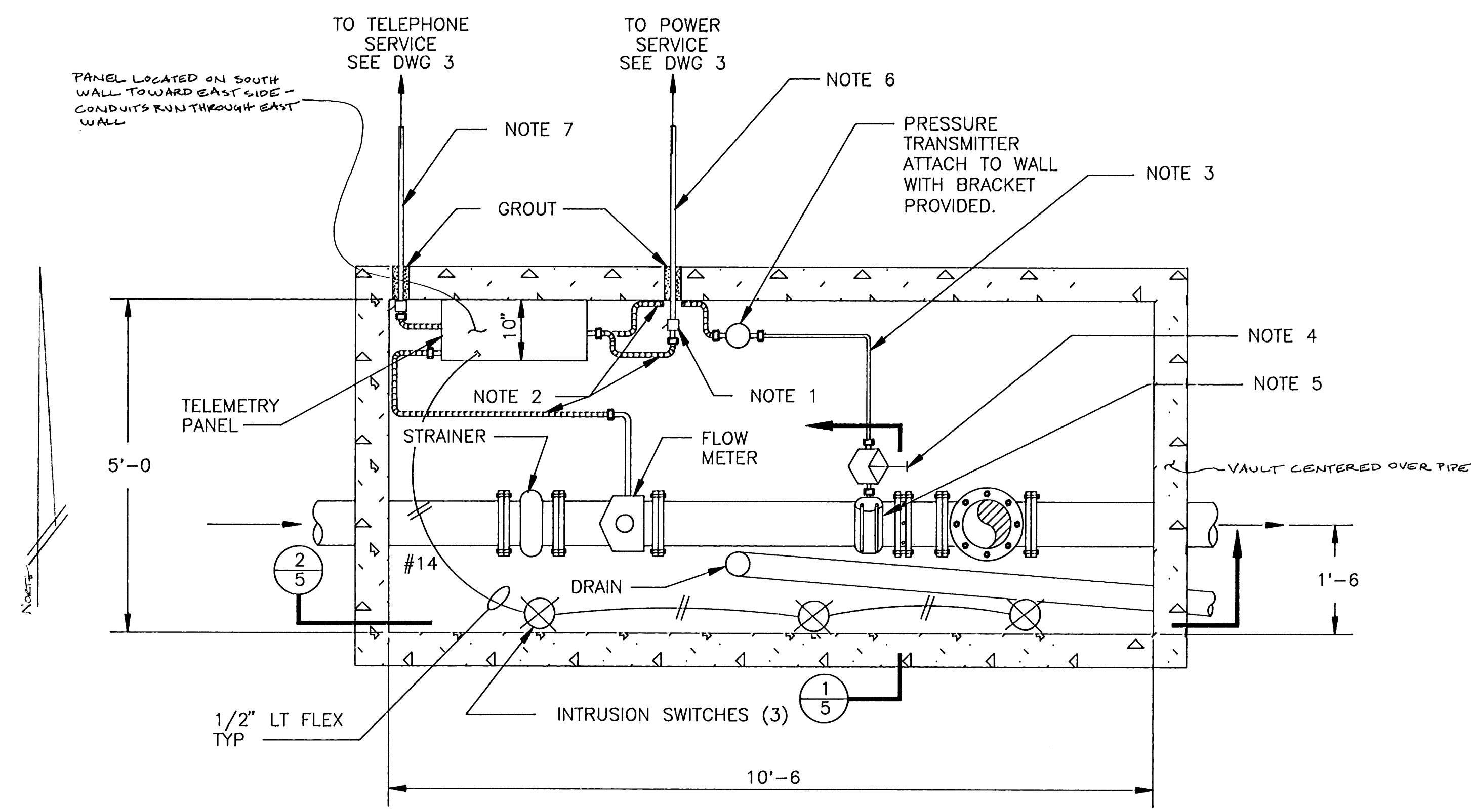
CITY OF ALBANY, OREGON  
PUBLIC WORKS DEPARTMENT  
ENGINEERING/UTILITIES DIVISION  
**MILLERSBURG WATERLINE**  
WL-90-2  
Detail Sheet

DATE	REVISIONS NO.	BY	DRAWN	DESIGNED	RES
5-1-92	AS-BLT	GM	GM	GM	GM
				CHECKED	AV
				SCALE:	AS NOTED
				HORIZ.	
				VERT.	



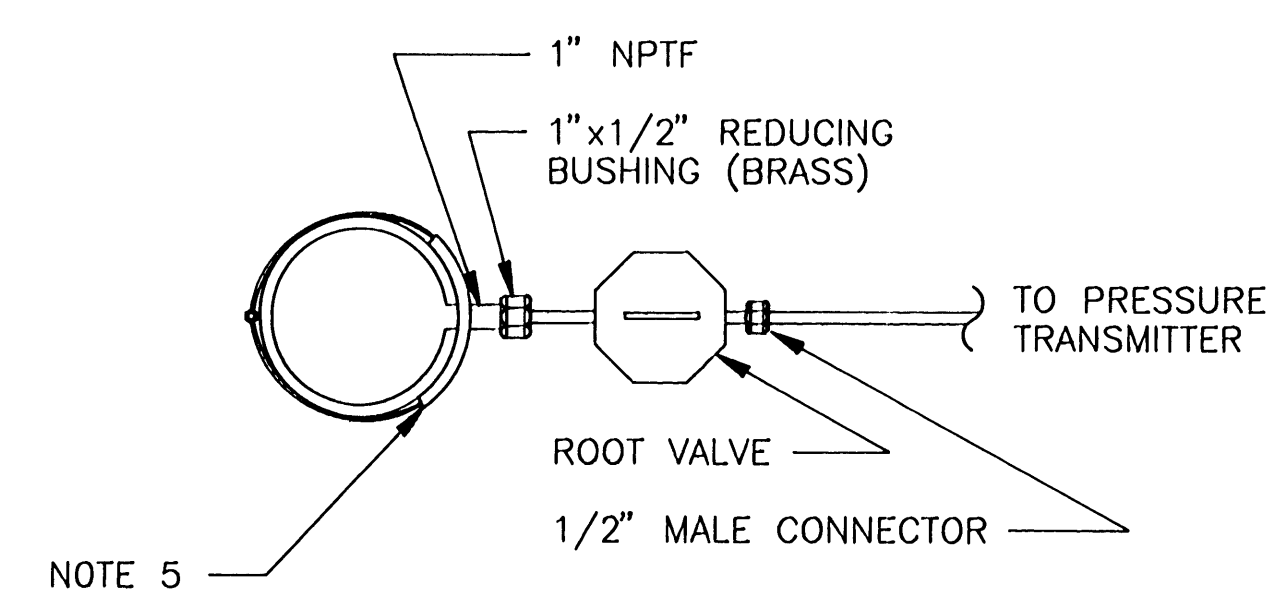
TELEMETRY PANEL LAYOUT  
SECTION 2  
NO SCALE

SCHEMATIC DIAGRAM  
NO SCALE

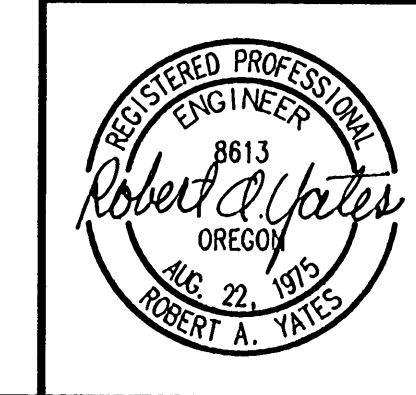


VAULT PLAN  
SCALE: 3/4" = 1'-0"

- NOTES:
1. CONDUIT SEAL
  2. WATER TIGHT FLEX
  3. 1/2" O.D. STAINLESS STEEL TUBING
  4. ROOT VALVE
  5. SADDLE TAP SEE PIPE SPEC.
  6. 3/4" SCH 80 PVC CONDUIT, 3 #12 THWN CU. BURY 18" MIN.
  7. 3/4" SCH 80 PVC CONDUIT, TELEPHONE WIRE. BURY 18" MIN.



SECTION 1  
NO SCALE



CITY OF ALBANY, OREGON  
PUBLIC WORKS DEPARTMENT  
ENGINEERING/UTILITIES DIVISION

**MILLERSBURG WATERLINE**  
WL-90-2