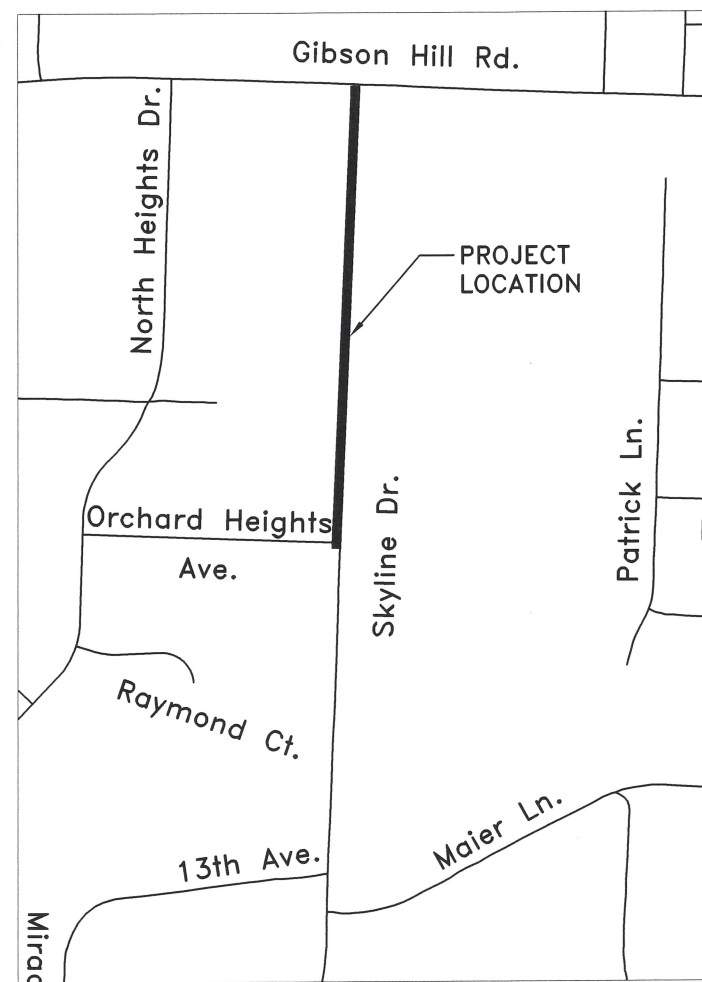


CITY OF ALBANY

WL-24-02, SKYLINE DRIVE WATERLINE

SHEET INDEX	
Sheet Number	Sheet Title
1	COVER
2	STA 0+00 to 3+21
3	STA 3+21 to END

LEGEND	
<ul style="list-style-type: none"> EXISTING WATER SERVICE RECONNECT EXISTING METER INSTALL NEW SERVICE WITH NO METER REPLACE EXISTING METER WITH NEW METER AIR RELEASE VALVE EXISTING WATER VALVE NEW WATER VALVE EXISTING WATER LINE EXISTING GAS LINE EXISTING STORM LINE EXISTING SANITARY SEWER LINE EXISTING QLN DUCT EXISTING POWER LINES NEW WATER LINE NEW STORM LINE NEW STORM DRAIN MAINLINE CLEANOUT NEW STORM DRAIN MANHOLE 	<ul style="list-style-type: none"> EXISTING POWER POLE EXISTING STORM MANHOLE NEW CURB INLET NEW CATCH BASIN NEW CURB INLET EXISTING CATCH BASIN EXISTING STREET LIGHT EXISTING TRAFFIC SIGN NEW TRAFFIC SIGN EXISTING HYDRANT NEW HYDRANT



Vicinity Map
Not to Scale

GENERAL NOTES

1. ALL CONSTRUCTION SHALL CONFORM TO THE CITY OF ALBANY STANDARD CONSTRUCTION SPECIFICATIONS AND ASSOCIATED STANDARD DRAWINGS. THE CURRENT VERSION OF THE CITY OF ALBANY STANDARD CONSTRUCTION SPECIFICATIONS CAN BE FOUND ON THE CITY'S WEBSITE AT WWW.CITYOFALBANY.NET.
2. UTILITIES SHOWN ARE FOR REFERENCE ONLY. FOR A FIELD LOCATE, CALL THE UTILITIES NOTIFICATIONS CENTER AT 1-800-332-2344.
3. OPERATING ACCESS FOR CITY MAINTENANCE PERSONNEL TO EXISTING AND NEW WATER VALVES AND MANHOLES SHALL BE CONTINUOUSLY MAINTAINED BY THE CONTRACTOR DURING ALL CONSTRUCTION ACTIVITIES.
4. CONTRACTOR SHALL VERIFY ALL EXISTING PIPE ELEVATIONS, PIPE DIAMETERS, AND PIPE MATERIALS AT CONNECTION AND ABANDONMENT LOCATIONS PRIOR TO CONSTRUCTION. ANY DISCREPANCIES SHALL BE REPORTED TO ENGINEER PRIOR TO BEGINNING WORK.
5. ATTENTION: OREGON LAW REQUIRES YOU TO FOLLOW RULES ADOPTED BY THE OREGON UTILITY NOTIFICATION CENTER. THOSE RULES ARE SET FORTH IN OAR 952-001-0010 THROUGH OAR 952-001-0090. YOU MAY OBTAIN COPIES OF THE RULES BY CALLING THE CENTER. (NOTE: THE TELEPHONE NUMBER FOR THE OREGON UTILITY NOTIFICATION CENTER IS (503) 232-1987).
6. CONTRACTOR SHALL BE RESPONSIBLE FOR PROPER INSTALLATION AND MAINTENANCE OF ALL EROSION PREVENTION SEDIMENT CONTROL (EPSC) MEASURES IN ACCORDANCE WITH LOCAL, STATE, AND FEDERAL REGULATIONS UNTIL ALL CONSTRUCTION IS COMPLETED AND APPROVED BY THE CITY OF ALBANY, AND VEGETATION/LANDSCAPING IS ESTABLISHED. FOR GUIDANCE, REFER TO THE CITY OF ALBANY EPSC MANUAL WHICH CAN BE FOUND AT www.cityofalbany.net.

DESIGNED: N. NELSON	DRAWN: N. NELSON	CHECKED: C. CERKLEWSKI	DATE: 3/22/2024
REVISIONS			
DATE:	NO:	BY:	

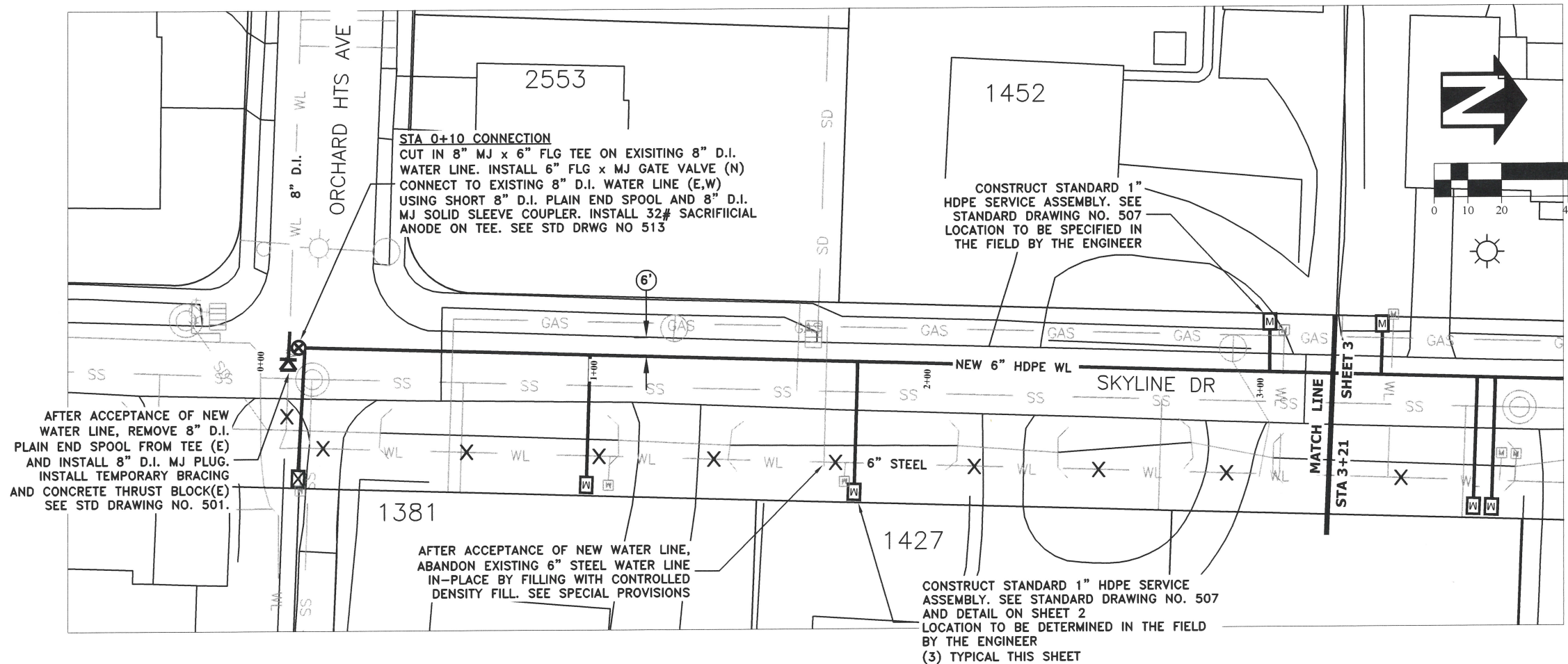
PUBLIC WORKS DEPARTMENT
ENGINEERING SERVICES



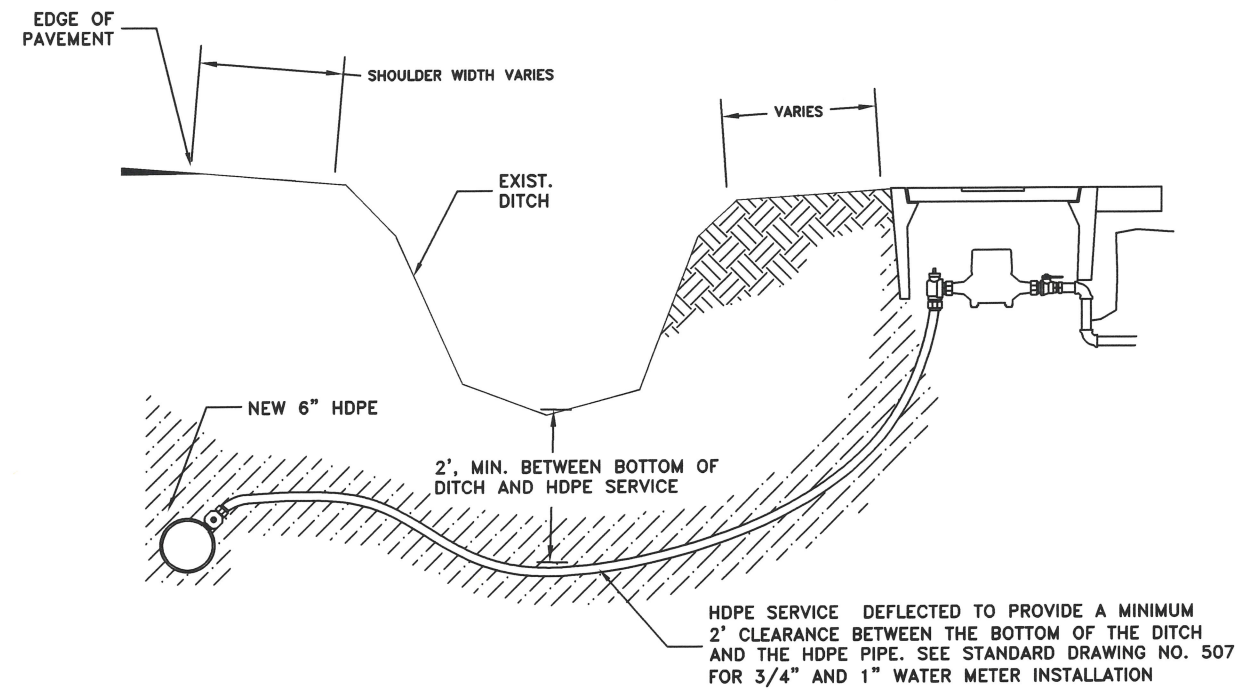
WL-24-02, SKYLINE DRIVE WATERLINE



EXPIRATION DATE: 12/31/2024
SHEET NO. 1 OF 3
PROJECT NO: WL-24-02
FILE: FILENAME.DWG




DETAIL 1
WATER SERVICE DITCH CROSSING (N.T.S.)



DESIGNED: N. NELSON	REVISIONS
DRAWN: N. NELSON	NO: ---
CHECKED: C. CERKLEWSKI	BY: ---
DATE: 3/22/2024	DATE: ---

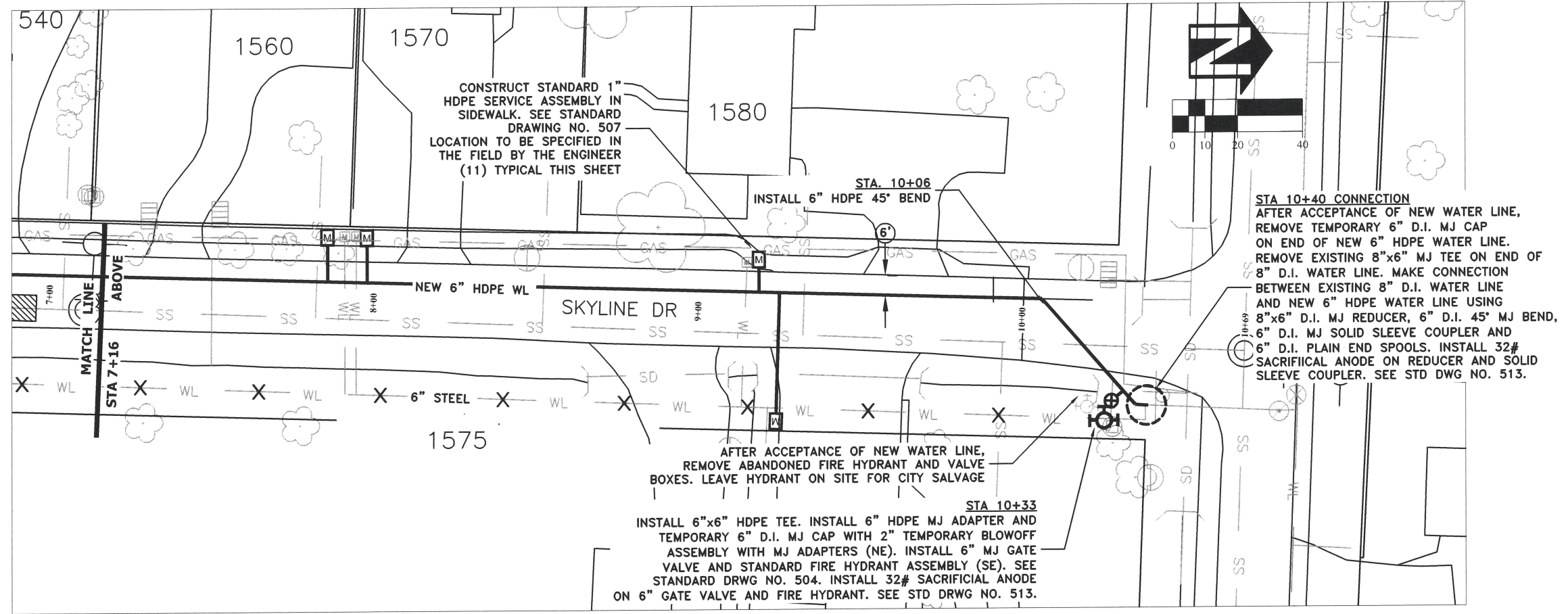
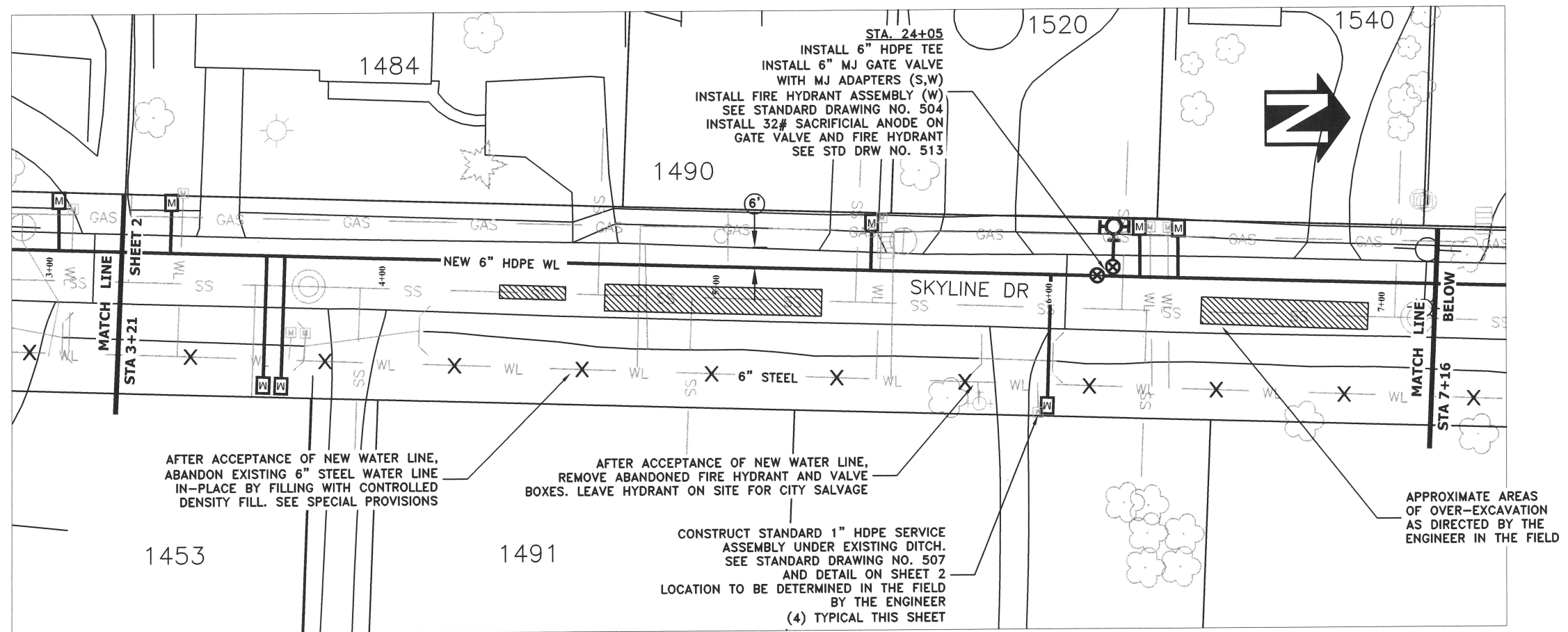
PUBLIC WORKS DEPARTMENT
ENGINEERING SERVICES



WL-24-02, SKYLINE DRIVE WATERLINE
STA 0+00 TO 3+21

REGISTERED PROFESSIONAL
ENGINEER
82577PE
Nolan J. Nelson
OREGON
JUNE 29, 2009
NOLAN J. NELSON

EXPIRATION DATE: 12/31/2024
SHEET NO. 2 OF 3
PROJECT NO: WL-24-02
FILE: BASE.DWG



DESIGNED: N. NELSON	REVISIONS
DRAWN: N. NELSON	NO: --
CHECKED: C. CERKLEWSKI	BY: --
DATE: 3/22/2024	DATE: --

PUBLIC WORKS DEPARTMENT
ENGINEERING SERVICES



WL-24-02, SKYLINE DRIVE WATERLINE
STA 3+21 TO END



EXPIRATION DATE: 12/31/2024

SHEET NO. 3 OF 3

PROJECT NO: WL-24-02

FILE: BASE.DWG